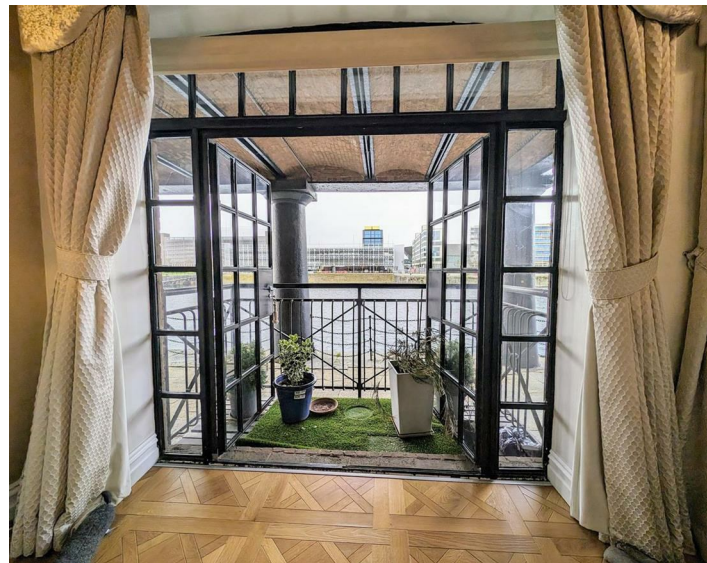
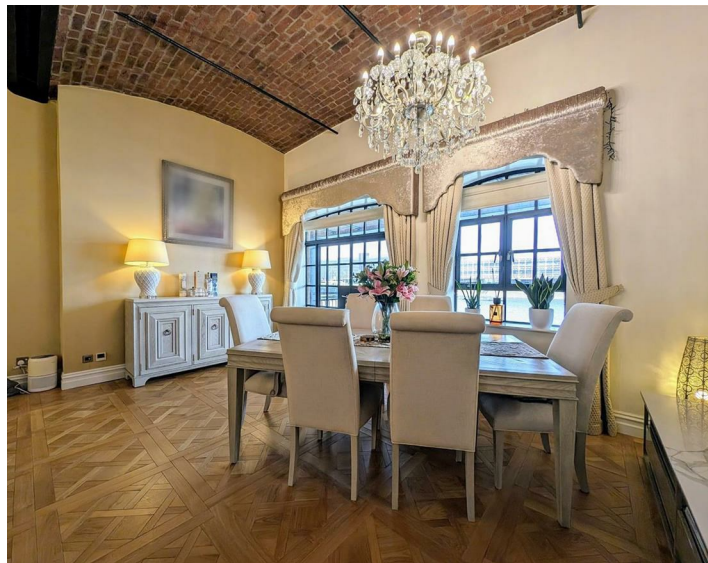


Apt 87 South Quay Wapping Quay, Liverpool, L3 4BW
£1,900 Per Month

www.
cityresidential
.co.uk



About the Property

Available from 31/07/2025

City Residential are delighted to bring to the market this impressive 3-bedroom apartment. Situated on the ground floor, in the prestigious and historic Wapping Dock.

Brimming with period charm and character this well presented apartment boasts stunning features, including brick barrelled ceilings and exposed beams. The property also benefits from beautiful views overlooking the dock itself.

The apartment is ideally situated within Liverpool City Centre, providing convenient access to the world famous Albert Dock and Liverpool One shopping centre.

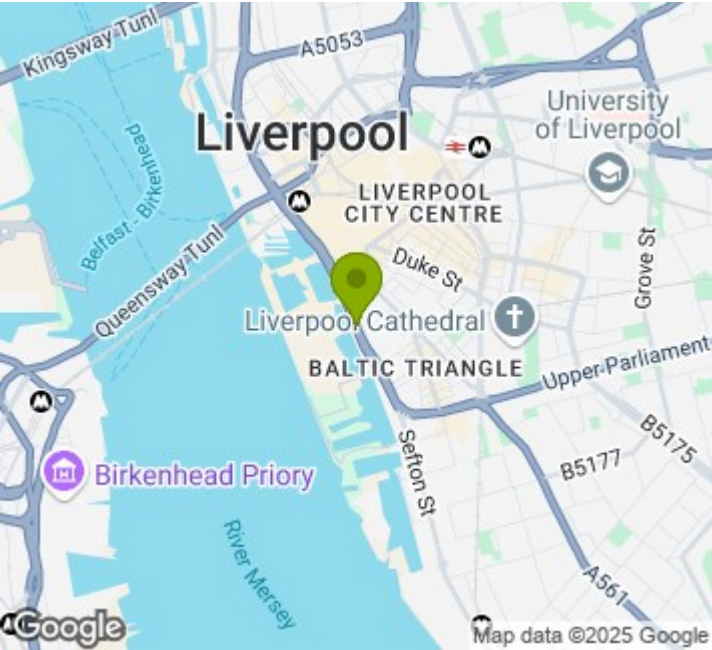
This exquisitely designed apartment briefly comprises; reception hallway, spacious living/dining room with stunning arched brick barrel ceiling, exposed beam work and a balcony over looking the docks, a modern fitted kitchen with underfloor heating , master bedroom which benefits from an en-suite shower room, a double bedroom, a single bedroom that is utilised as a dedicated workspace, a utility room with a washer/dryer and a family bathroom complete this apartment.

The property also benefits from an allocated car parking space.

Please note: The gym equipment in the second bedroom bedroom will be replaced with a double bed and bedside locker.

Don't miss the opportunity to let this extraordinary apartment. Call us now to arrange a viewing today and experience waterfront living at its finest!

- Waterfront Location
- Parking Included
- Fully Furnished
- EPC Rating - E
- Council Tax Band - E
- Deposit Payable £2,192
- Available from 31/07/2025
- Must Be Viewed!!
- Stunning 3 Bedroom Apartment



Energy Efficiency Rating

	Current	Potential
Very energy efficient - lower running costs		
(92 plus) A		
(81-91) B		
(69-80) C		72
(55-68) D		
(39-54) E	43	
(21-38) F		
(1-20) G		
Not energy efficient - higher running costs		
England & Wales	EU Directive 2002/91/EC	



City Residential
81/87 Victoria Street, The Old Haymarket, Liverpool L1 6DG
T: 0151 231 6100 F: 0151 231 6105
E: sales@cityresidential.co.uk



WWW.
cityresidential
.co.uk