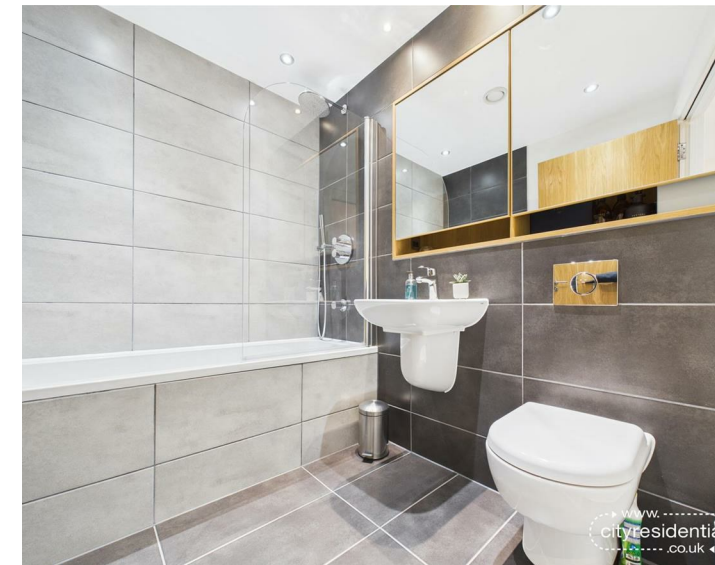
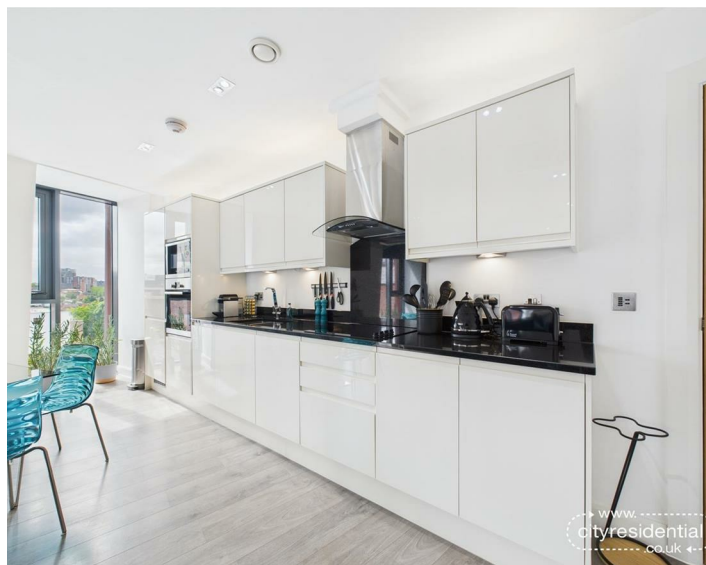




38 Chancery House 96 Paradise Street, Liverpool, L1 3HJ
Asking Price £225,000 Leasehold

www.
cityresidential
.co.uk



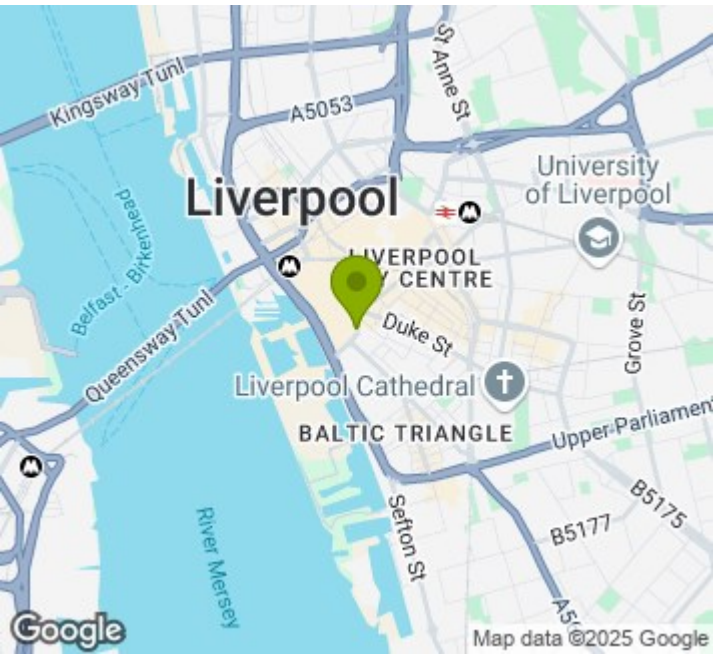
About the Property

Your new home awaits! Contemporary living at its very best, this two bedroom penthouse apartment offers stylish city living in the stunning grade II listed Chancery House development.

The apartment which has upgraded specification including air conditioning, truly does offer a premium finish throughout. Set in the new build extension of this fantastic development, the property is located in arguably the most desirable location in the City Centre and offers close proximity to many of the local amenities including shopping at Liverpool One, bars, restaurants and of course the world famous Albert Dock.

The luxury accommodation briefly comprises; entrance hall, open plan living/dining room with a glorious view over Liverpool Anglican Cathedral, high specification and stylish fitted kitchen with granite work top, master bedroom which benefits from a chic en-suite shower room, a further double bedroom and family bathroom.

Do not miss this fantastic opportunity, call City Residential now for further information.



Energy Efficiency Rating

	Current	Potential
Very energy efficient - lower running costs		
(92 plus) A		
(81-91) B		
(69-80) C		
(55-68) D		
(39-54) E		
(21-38) F		
(1-20) G		
Not energy efficient - higher running costs		
England & Wales	EU Directive 2002/91/EC	

