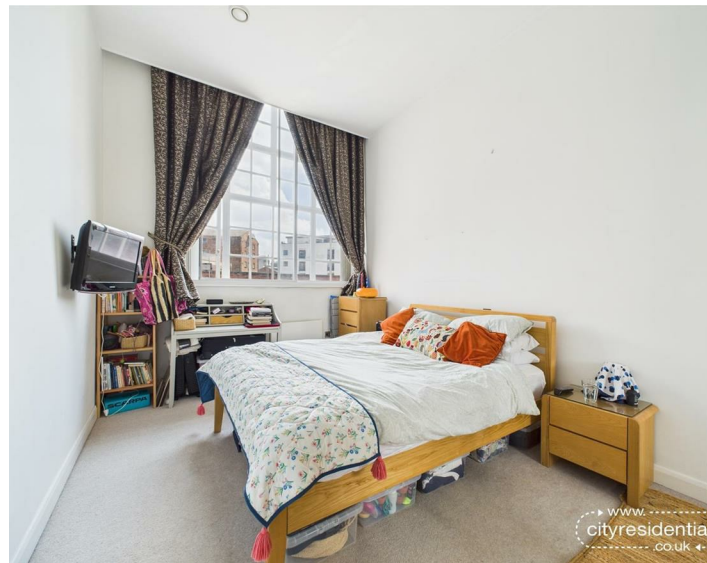




1 Chancery House, Liverpool, L1 3HJ

Asking Price £165,000 Leasehold

www.
cityresidential
.co.uk



About the Property

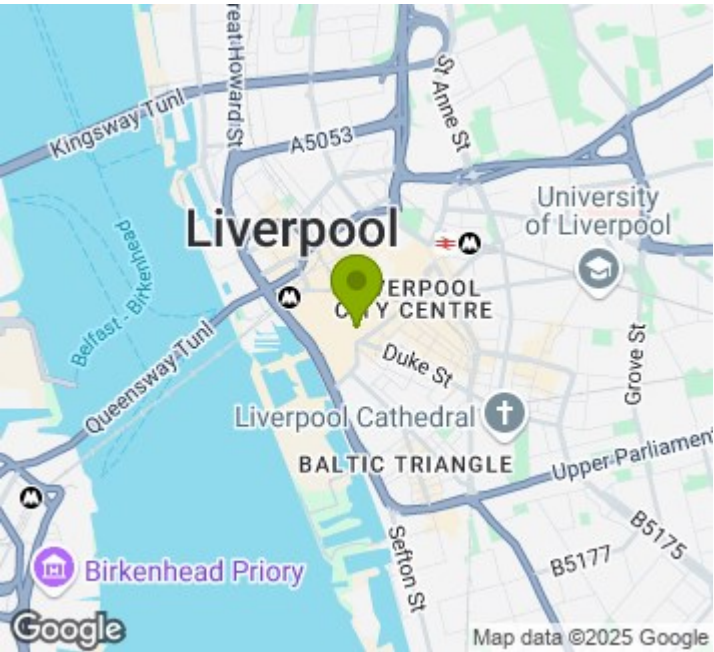
City Residential are delighted to bring to market this stunning two bedroom, first floor apartment in Chancery House, located in the very heart of Liverpool City Centre. Chancery House is a Grade II Listed building which was originally built in 1899 and has now been completely renovated and converted in to a fantastic residential development.

The property is situated in arguably the most desirable location in the City and offers close proximity to many of the local amenities including shopping at Liverpool One, bars, restaurants and world famous Albert Dock.

The accommodation briefly comprises; entrance hall, open plan living/dining room, fully fitted kitchen, master bedroom, second bedroom and family bathroom.

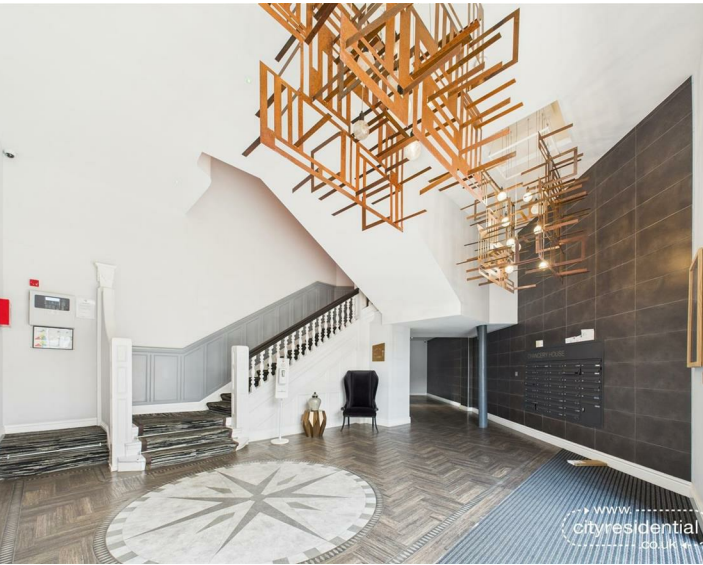
Do not miss this opportunity to purchase a property in one of Liverpool's most prestigious developments and call us now to arrange your viewing.

- Stylish and modern two bedroom apartment
- Two large double bedrooms
- Fully integrated kitchen
- Sought after Chancery House development
- Close to local amenities
- Character filled building



Energy Efficiency Rating

	Current	Potential
Very energy efficient - lower running costs		
(92 plus) A		
(81-91) B		
(69-80) C	78	78
(55-68) D		
(39-54) E		
(21-38) F		
(1-20) G		
Not energy efficient - higher running costs		
England & Wales	EU Directive 2002/91/EC	



City Residential
81/87 Victoria Street, The Old Haymarket, Liverpool L1 6DG
T: 0151 231 6100 F: 0151 231 6105
E: sales@cityresidential.co.uk



WWW.
cityresidential
.co.uk