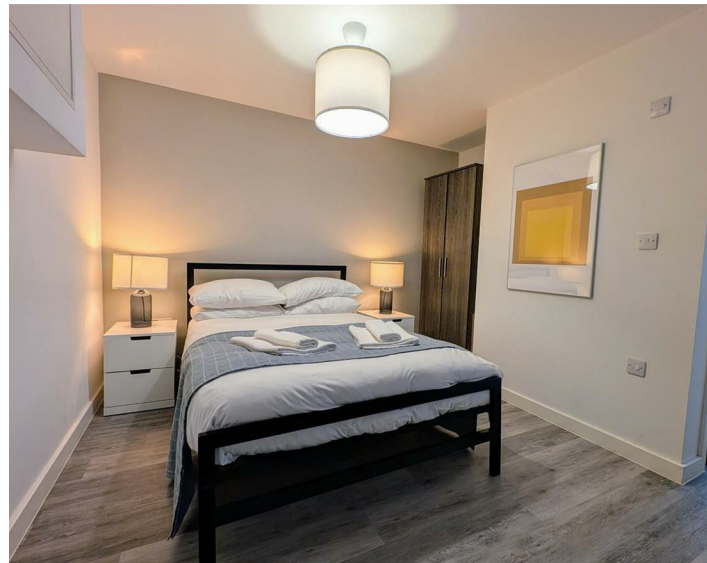




Apt 73 4 Leigh Street, Liverpool, L1 1NT  
£695 Per Month

www.  
cityresidential  
.co.uk





About the Property

Move In Ready!!

A well-presented studio apartment now available to rent in the heart of Liverpool City Centre, just moments from shops, restaurants, and transport links.

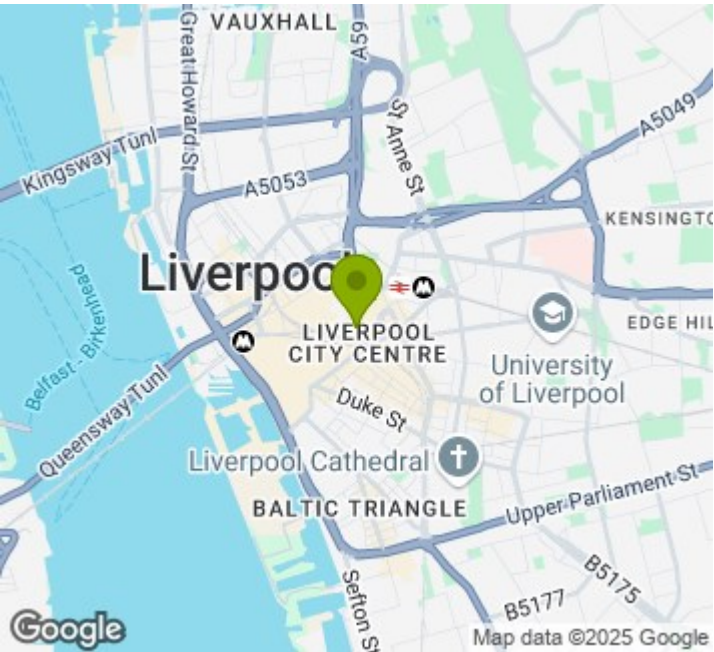
Key Features:

- Prime location on Leigh Street, close to Liverpool Central & Lime Street stations
- Double glazing for comfort and noise reduction
- Secure intercom entry system
- Modern kitchen with integrated appliances
- Lift access to all floors

Ideal for professionals or students, this bright and convenient studio offers easy access to everything the city has to offer.

Contact us today to arrange a viewing!

- Move In Ready!!
- Fully Furnished
- Amazing Location
- Must Be Viewed!!
- EPC Rating - B
- Council Tax Band - A
- Deposit Payable £801



Energy Efficiency Rating

	Current	Potential
Very energy efficient - lower running costs		
(92 plus) <b>A</b>		
(81-91) <b>B</b>	<b>84</b>	<b>86</b>
(69-80) <b>C</b>		
(55-68) <b>D</b>		
(39-54) <b>E</b>		
(21-38) <b>F</b>		
(1-20) <b>G</b>		
Not energy efficient - higher running costs		
<b>England &amp; Wales</b>	EU Directive 2002/91/EC	



City Residential  
81/87 Victoria Street, The Old Haymarket, Liverpool L1 6DG  
T: 0151 231 6100 F: 0151 231 6105  
E: sales@cityresidential.co.uk



WWW.  
cityresidential  
.co.uk