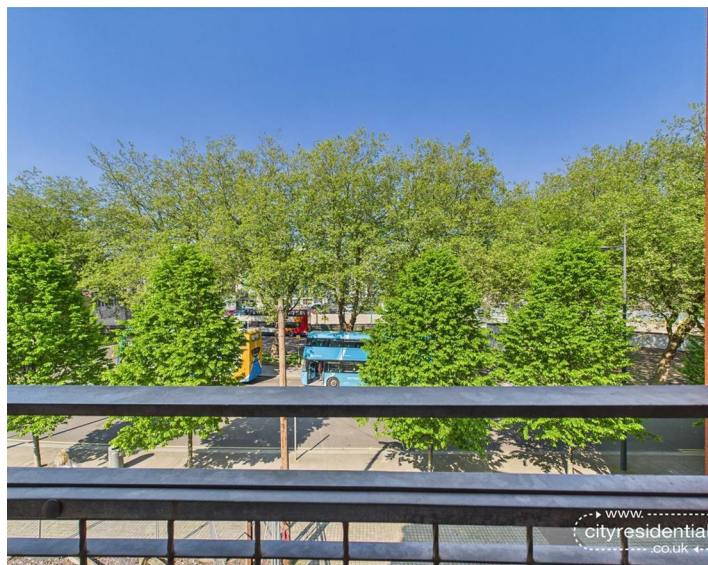
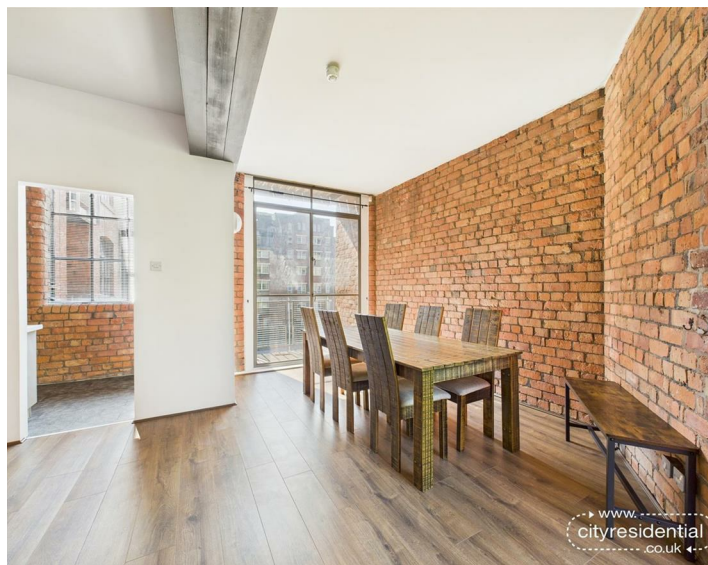


28 Abbey Building, Liverpool, L1 6ER
Asking Price £170,000 Leasehold

www.
cityresidential
.co.uk



About the Property

A stunning, character-filled one bedroom home in the heart of the city centre awaits your viewing...

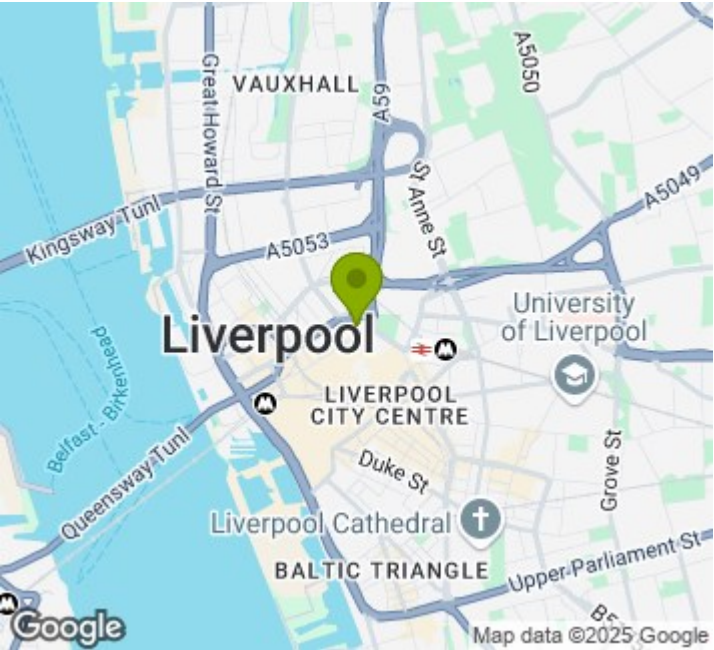
This loft style apartment is proudly offered for sale in the fantastic Abbey Building development. With many notable features including exposed brickwork, exposed beams and attractive communal outdoor spaces, this property is a must see!

Located on Old Haymarket, the development's convenient location offers easy access to local transport links, with Queens Square bus station and Lime Street train station within a 5 minute walk. Liverpool One shopping centre is also within a short walking distance as well as an array of bars and restaurants.

The accommodation briefly comprises; entrance hall, impressive living and dining room which could be utilised in a variety of ways, kitchen, spacious bedroom and bathroom. One of the standout features of this property are the two balconies, a rare find in city living.

Such an impressive property rarely comes to the market, therefore we strongly advise early inspection to avoid disappointment!

- Fantastic one bedroom apartment
- Two balconies
- Exposed brick features
- High ceilings
- Open-plan living space
- L1 postcode location



Energy Efficiency Rating

	Current	Potential
Very energy efficient - lower running costs		
(92 plus) A		
(81-91) B		
(69-80) C		77
(55-68) D	59	
(39-54) E		
(21-38) F		
(1-20) G		
Not energy efficient - higher running costs		
England & Wales	EU Directive 2002/91/EC	



City Residential
81/87 Victoria Street, The Old Haymarket, Liverpool L1 6DG
T: 0151 231 6100 F: 0151 231 6105
E: sales@cityresidential.co.uk



WWW.
cityresidential
.co.uk