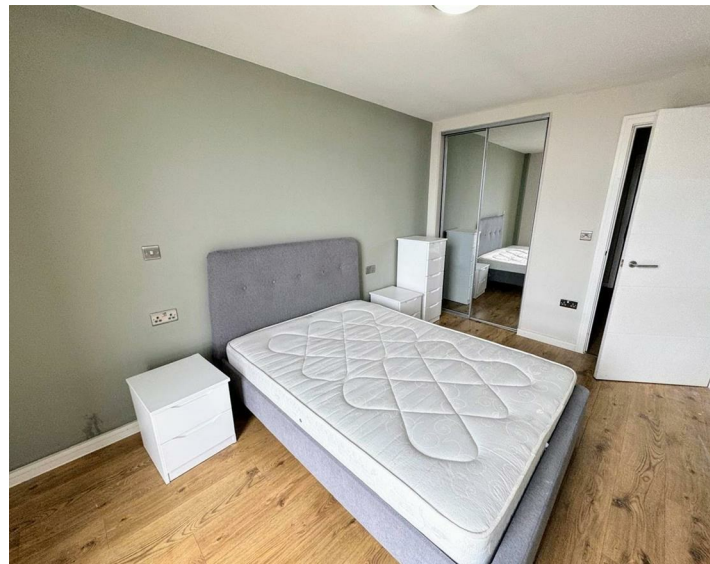




Apt 702 Quay Central, Liverpool, L3 0AD
£875 PCM

www.cityresidential.co.uk



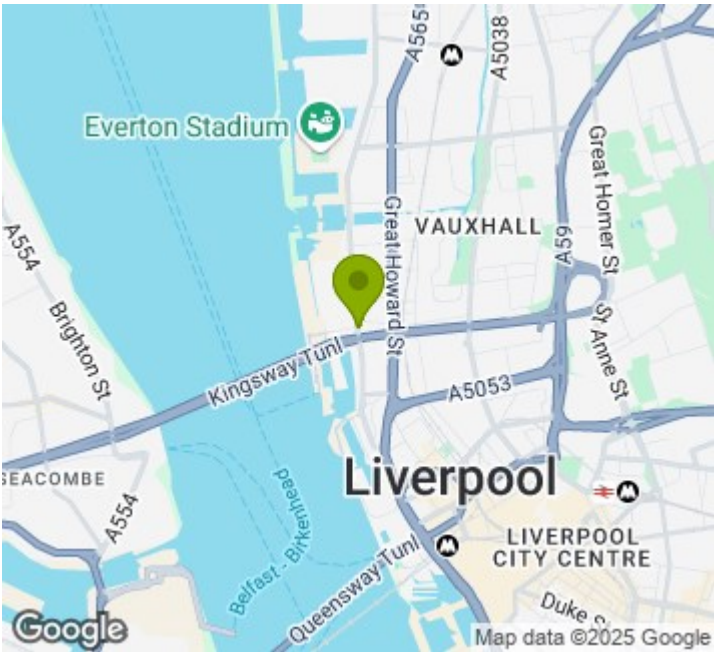
About the Property

AVAILABLE NOW is this one bedroom apartment in this prestigious location! If you are looking for a property in one of the most up and coming areas of the city then this property is for you. Situated on the 7th floor of the development, Quay Central now forms part of the famous Liverpool Sky Line.

In brief it's immaculate accommodation compromises of; entrance hall, open plan living/dining area, modern fully fitted kitchen which includes integrated appliances, a double bedroom and a main bathroom. Quay Central also benefits from having a designated cycle store. This development is serviced by a lift to all floors.

EPC Rating - C. Council Tax Band - B. A deposit amount of £1009.00 is payable upon moving in. Call us now on 0151 231 6100 to arrange a viewing.

- EPC Rating - C
- Council Tax Band - B
- Deposit - £1009.00
- One Bedroom, One Bathroom
- No Parking



Energy Efficiency Rating

	Current	Potential
Very energy efficient - lower running costs		
(92 plus) A		
(81-91) B		
(69-80) C	78	78
(55-68) D		
(39-54) E		
(21-38) F		
(1-20) G		
Not energy efficient - higher running costs		
England & Wales	EU Directive 2002/91/EC	



City Residential
81/87 Victoria Street, The Old Haymarket, Liverpool L1 6DG
T: 0151 231 6100 F: 0151 231 6105
E: sales@cityresidential.co.uk



► WWW. **cityresidential** .co.uk ◀