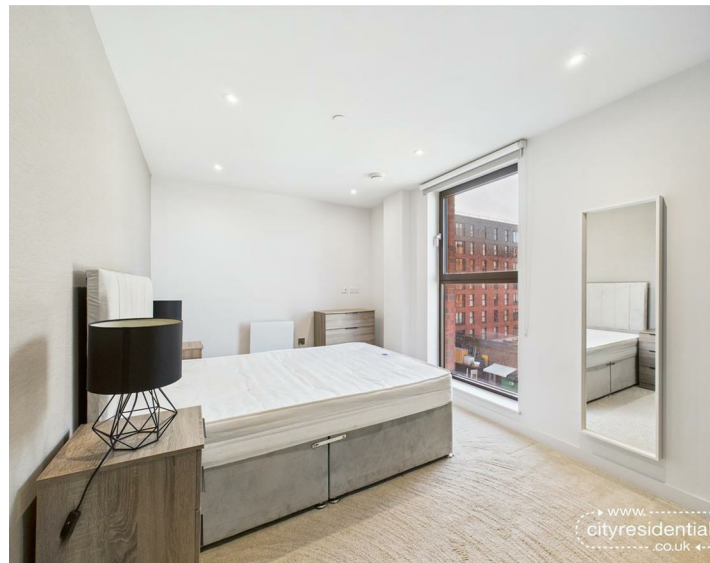
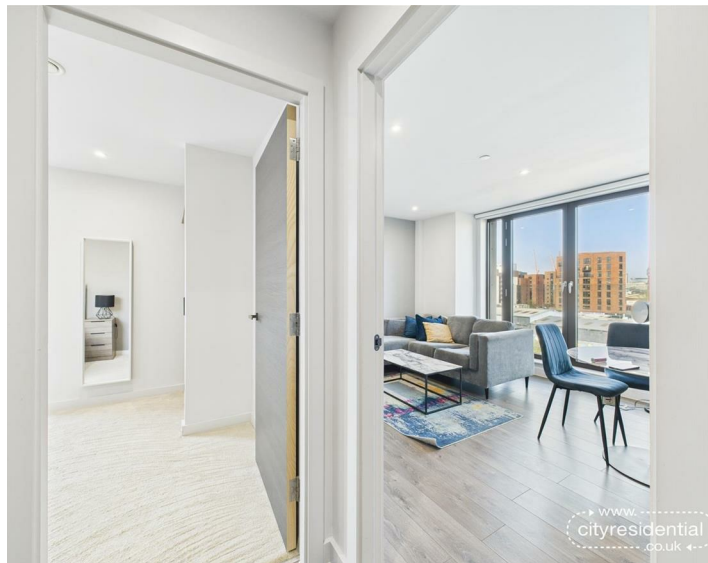




308 Parliament Square 17 Greenland Street, Liverpool, L1
Asking Price £185,000 Leasehold

www.cityresidential.co.uk



About the Property

City Residential are delighted to bring to the market this fantastic 2 bedroom property situated in the stunning Parliament Square development.

Located within the trendy Baltic area of Liverpool City Centre, this delightful apartment provides excellent living space finished to a high standard with quality fitments and tasteful décor throughout.

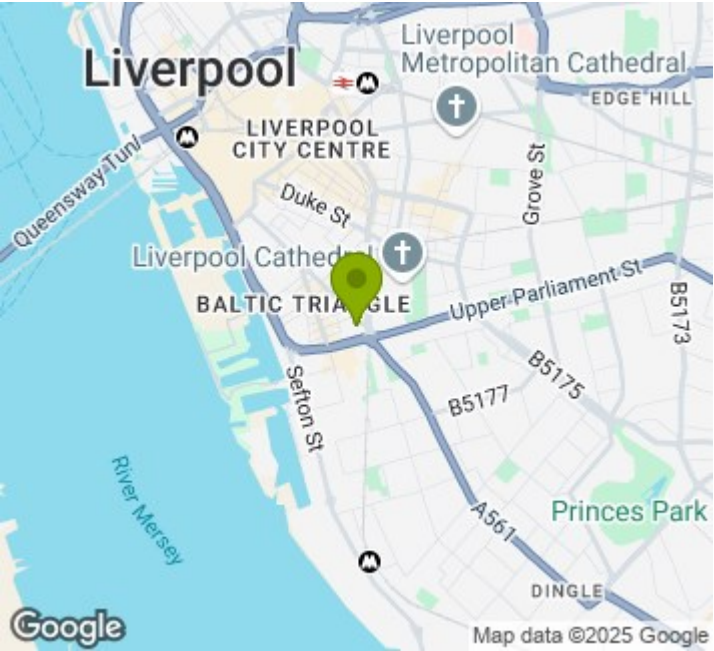
The property briefly comprises; entrance hallway, open plan lounge/dining/kitchen with juliet balcony and fitted kitchen units finished with contrasting work surfaces. There are also two large double bedrooms offering ample storage, one with an en-suite shower room finished to a high standard. A spacious family bathroom completes the accommodation.

Parliament Square has an array of fantastic amenities including an on site gym, swimming pool and sauna with fantastic viewings across the city centre, cinema room and residents lounge. All of which are available exclusively to residents.

The development also benefits from a 24/7 concierge.

This impressive property will not be around for long, therefore we recommend early inspection to avoid disappointment.

- Rooftop spa, gym, cinema, meeting rooms
- Baltic Triangle location
- Juliet balcony
- Fully integrated kitchen
- Two double bedrooms
- 24/7 concierge



Energy Efficiency Rating

	Current	Potential
Very energy efficient - lower running costs		
(92 plus) A		
(81-91) B	82	82
(69-80) C		
(55-68) D		
(39-54) E		
(21-38) F		
(1-20) G		
Not energy efficient - higher running costs		
England & Wales	EU Directive 2002/91/EC	



City Residential
81/87 Victoria Street, The Old Haymarket, Liverpool L1 6DG
T: 0151 231 6100 F: 0151 231 6105
E: sales@cityresidential.co.uk



WWW.
cityresidential
.co.uk