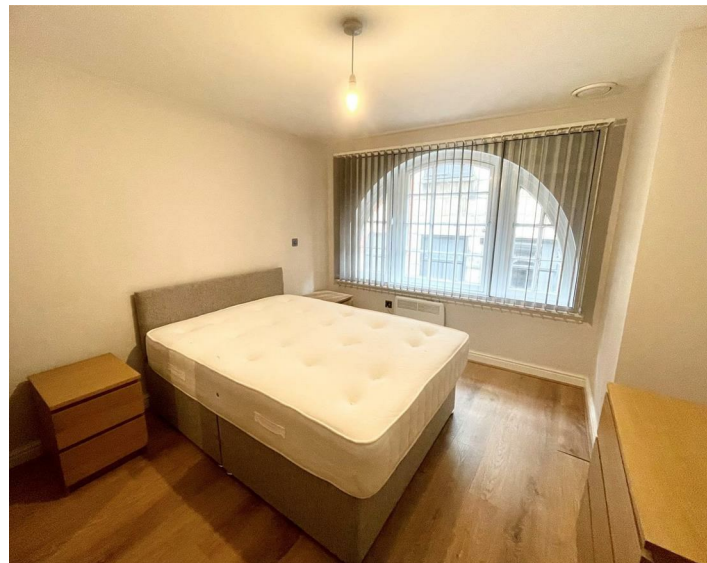
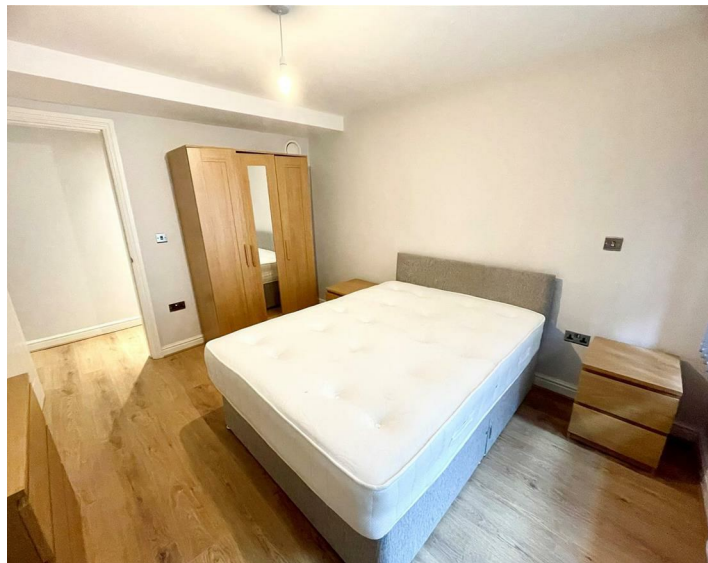




Apt 306 Princes Buildings, Liverpool, L2 2HT
£875 PCM

www.
cityresidential
.co.uk



About the Property

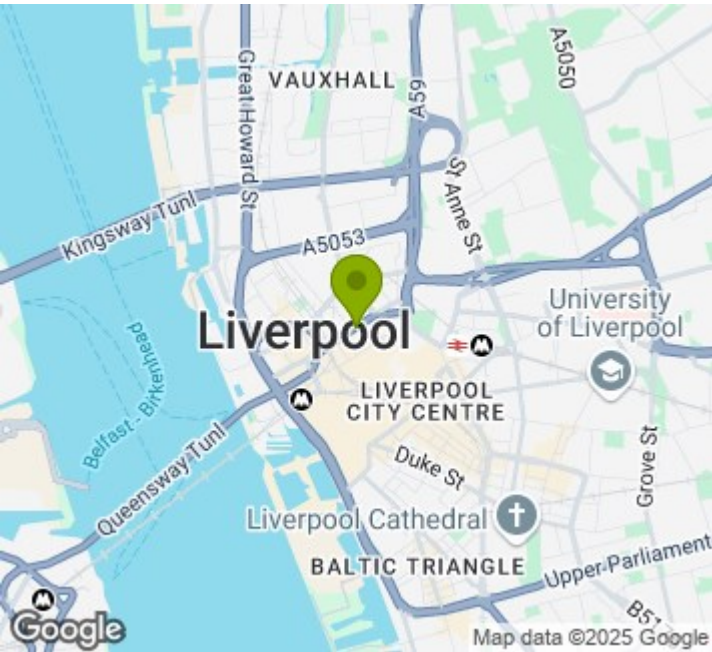
AVAILABLE NOW! Do not miss the opportunity to rent this one bedroom, third floor apartment!

Situated in the desirable Princes Buildings on Dale Street, the property provides convenient access to many local amenities including a wide range of stylish bars and restaurants, The Met Quarter and The Liverpool One Shopping Centre. Train travel is also easily accessible with Moorfields Train station being around the corner.

The accommodation briefly comprises; entrance hall, living/dining room, open plan fully fitted kitchen, a double bedroom and family bathroom. Early viewing is highly recommended to truly appreciate the accommodation on offer so call us now on 0151 231 6100 to arrange. Princes Buildings is serviced by a lift to all floors and there is no parking available with this property.

EPC - C. Council Tax Band - B. A deposit amount of £1009.00 is payable upon moving in.

- One Bedroom
- Fully Furnished
- No Parking
- EPC - C
- Available Now



Energy Efficiency Rating

	Current	Potential
Very energy efficient - lower running costs		
(92 plus) A		
(81-91) B		83
(69-80) C	71	
(55-68) D		
(39-54) E		
(21-38) F		
(1-20) G		
Not energy efficient - higher running costs		
England & Wales	EU Directive 2002/91/EC	



City Residential
81/87 Victoria Street, The Old Haymarket, Liverpool L1 6DG
T: 0151 231 6100 F: 0151 231 6105
E: sales@cityresidential.co.uk



WWW.
cityresidential
.co.uk