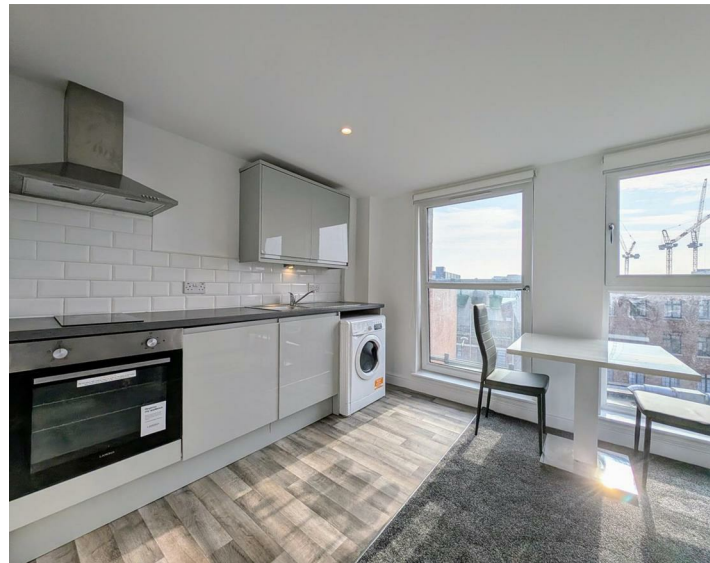




Apt 52 15 Wolstenholme Square, Liverpool, L1 4JL  
£700 Per Month

www.  
cityresidential  
.co.uk





About the Property

Available Now!

Nestled in the vibrant heart of Liverpool City Centre, this fully furnished studio apartment is situated on the fourth floor of Wolstenholme Square. Boasting a high-standard finish, the property features a modern, well-appointed bathroom and a sleek kitchen area complete with integrated appliances. The layout includes an entrance hall, an open-plan living and dining space, a comfortable bedroom area, and a separate bathroom, offering a perfect blend of style and functionality.

Please note that the building does not have a lift, and parking is not available. However, the apartment's prime location and chic design make it a highly desirable option for those seeking city living at its finest.

Given its appeal, this studio is expected to attract significant interest, so early viewings are strongly recommended to fully appreciate its charm and potential. Don't miss your chance to secure this stunning property – contact City Residential today on 0151 231 6100 or visit [www.cityresidential.co.uk](http://www.cityresidential.co.uk) to arrange a viewing or for more details. Act quickly – this gem won't be available for long!

- Electricity Included!
- Fantastic Location
- Fully Furnished
- Must Be Viewed!!
- EPC Rating - B85
- Council Tax Band - A
- Deposit - £807



Energy Efficiency Rating

	Current	Potential
Very energy efficient - lower running costs		
(92 plus) <b>A</b>		
(81-91) <b>B</b>	<b>85</b>	<b>85</b>
(69-80) <b>C</b>		
(55-68) <b>D</b>		
(39-54) <b>E</b>		
(21-38) <b>F</b>		
(1-20) <b>G</b>		
Not energy efficient - higher running costs		
<b>England &amp; Wales</b>	EU Directive 2002/91/EC	



City Residential  
81/87 Victoria Street, The Old Haymarket, Liverpool L1 6DG  
T: 0151 231 6100 F: 0151 231 6105  
E: [sales@cityresidential.co.uk](mailto:sales@cityresidential.co.uk)



► [www.cityresidential.co.uk](http://www.cityresidential.co.uk) ◀