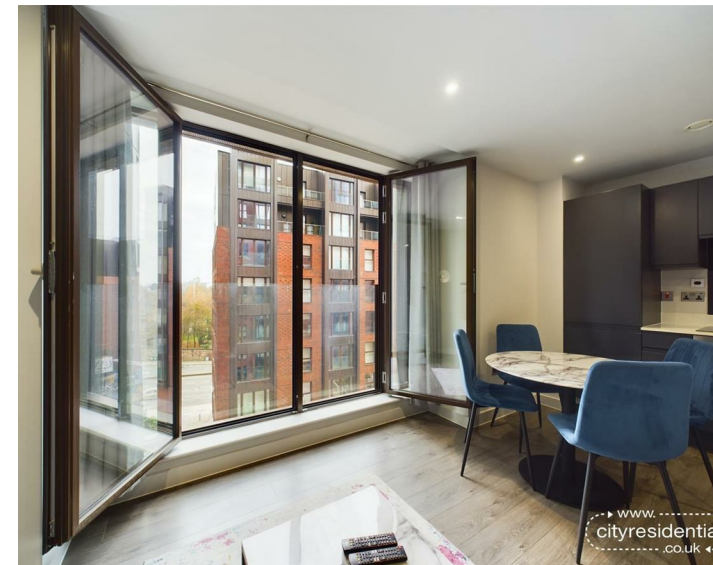




Block B 403 Parliament Square, Liverpool, L1 0DU  
Asking Price £190,000 Leasehold

www.  
cityresidential  
.co.uk



About the Property

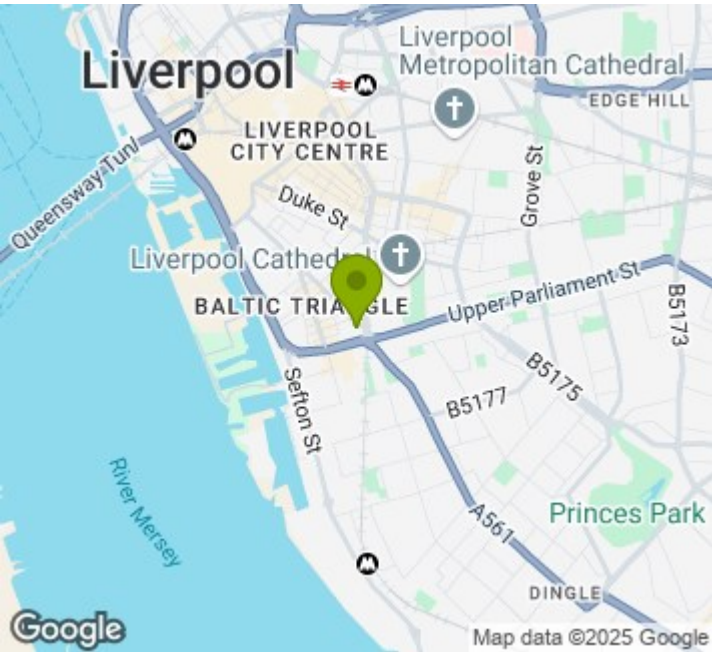
Nestled in the vibrant Baltic Triangle area of Liverpool city centre, this modern apartment in Parliament Square offers a luxurious urban lifestyle. The fourth floor property boasts two double bedrooms, two bathrooms and a stylish open-plan living area, benefitting from a Juliette balcony.

The apartment which is ready to move into and boasts a fully-integrated modern kitchen. With two spacious double bedrooms, the master offers a sleek ensuite shower room. Alongside the main bathroom with a three-piece suite, the property also homes a large utility cupboard meaning the occupiers benefit from ample storage space.

Residents of Parliament Square have exclusive access to a range of amenities, including a rooftop spa with breathtaking 360° views of the city, a resident's gym, a cinema room and meeting rooms.

Whether you're looking to immerse yourself in Liverpool's independent creative scene or simply enjoy the convenience of city living, this apartment offers the best of both worlds. Don't miss out on the opportunity to view and call us today to arrange your appointment!

- Rooftop spa, gym, cinema, meeting rooms
- Baltic Triangle location
- Juliette balcony
- Fully integrated kitchen
- Two double bedrooms
- Two bathrooms



Energy Efficiency Rating

	Current	Potential
Very energy efficient - lower running costs		
(92 plus) <b>A</b>		
(81-91) <b>B</b>		
(69-80) <b>C</b>		
(55-68) <b>D</b>		
(39-54) <b>E</b>		
(21-38) <b>F</b>		
(1-20) <b>G</b>		
Not energy efficient - higher running costs		
<b>England &amp; Wales</b>	EU Directive 2002/91/EC	



City Residential  
81/87 Victoria Street, The Old Haymarket, Liverpool L1 6DG  
T: 0151 231 6100 F: 0151 231 6105  
E: sales@cityresidential.co.uk



WWW.  
cityresidential  
.co.uk