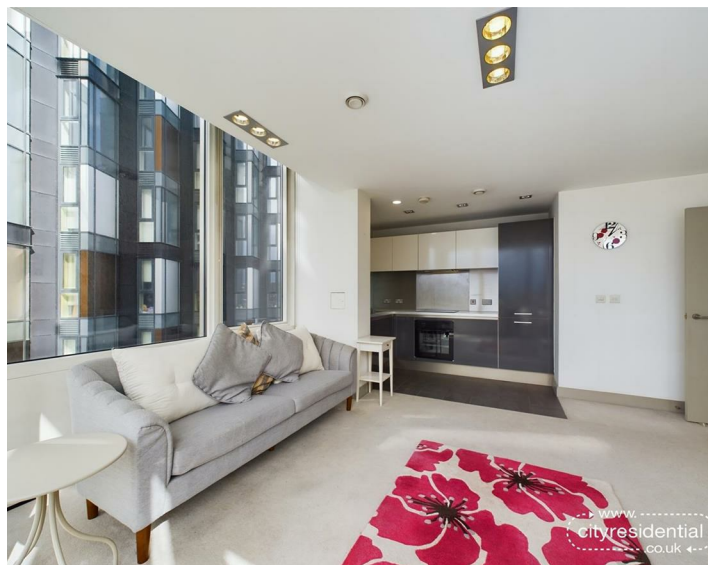




A107 One Park West, Liverpool, L1 8LN
Asking Price £220,000 Leasehold

WWW.
cityresidential
.co.uk



About the Property

Nestled in the heart of Liverpool city centre, this exquisite two-bedroom, two-bathroom apartment is a true gem within the sought-after L1 area.

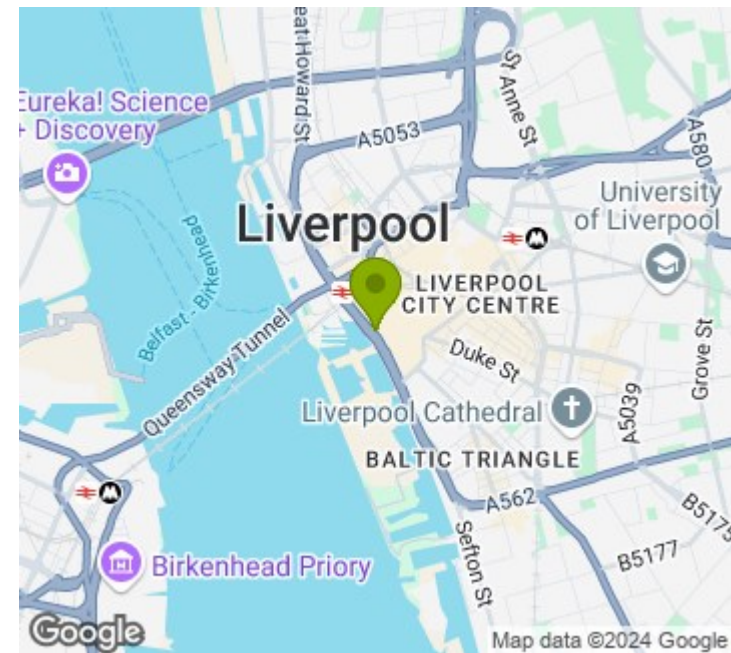
As you step into this first-floor property and through the hallway, you are greeted by stunning views of the majestic River Mersey from every angle, creating a picturesque backdrop for your daily life. The spacious open-plan living area is perfect for entertaining guests or simply relaxing in style. The fully integrated kitchen appliances add a touch of modern convenience to the space.

One of the handy features of this property is the secure allocated parking, ensuring that you never have to worry about finding a spot after a long day. Additionally, the 24-hour concierge service provides peace of mind and convenience for residents.

Step outside onto the communal outdoor terrace and be prepared to be mesmerised by more breathtaking views of the River Mersey and the iconic Royal Albert Dock. This space offers a perfect retreat to unwind and soak in the beauty of the surroundings.

Whether you are looking for a luxurious home or a savvy investment opportunity, this apartment ticks all the boxes. Don't miss the chance to make this stunning property your own and experience the best of what Liverpool has to offer!

- Secure allocated parking
- 24 concierge service
- Views across the River Mersey
- Communal outdoor terrace
- L1 location
- Two bed, two bath



Energy Efficiency Rating

	Current	Potential
Very energy efficient - lower running costs		
(92 plus) A		
(81-91) B	84	84
(69-80) C		
(55-68) D		
(39-54) E		
(21-38) F		
(1-20) G		
Not energy efficient - higher running costs		
England & Wales	EU Directive 2002/91/EC	



City Residential
 81/87 Victoria Street, The Old Haymarket, Liverpool L1 6DG
 T: 0151 231 6100 F: 0151 231 6105
 E: sales@cityresidential.co.uk



WWW.
cityresidential
 .co.uk