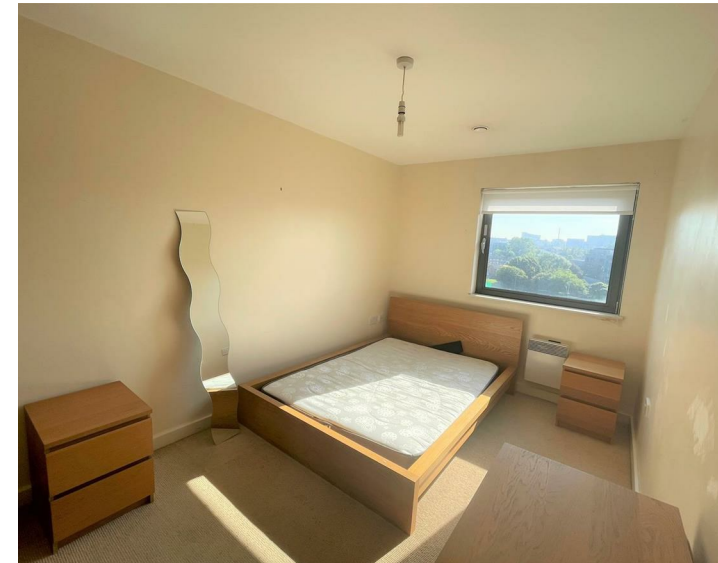




Apt 212 The Reach, Liverpool, L3 2DD
£950 PCM

www.
cityresidential
.co.uk



About the Property

AVAILABLE FROM 10TH OCTOBER! is this spacious two bedroom 6th floor apartment which has great views from the balcony across the city center. The apartment comprises of two double bedrooms, a fully fitted kitchen, a good sized living area and a well appointed bathroom.

This development is serviced by a lift to all floors and there is no parking available with this apartment.

EPC Rating - C. Council Tax Band - C. A deposit amount of £1096.00 is payable upon moving in.

- 6th Floor
- No Parking
- Two Bedroom
- Fully Furnished
- Available From 10th October



Energy Efficiency Rating

| | Current | Potential |
|---|----------------------------|-----------|
| Very energy efficient - lower running costs | | |
| (92 plus) A | | |
| (81-91) B | | |
| (69-80) C | | |
| (55-68) D | | |
| (39-54) E | | |
| (21-38) F | | |
| (1-20) G | | |
| Not energy efficient - higher running costs | | |
| England & Wales | EU Directive 2002/91/EC | |



City Residential
81/87 Victoria Street, The Old Haymarket, Liverpool L1 6DG
T: 0151 231 6100 F: 0151 231 6105
E: sales@cityresidential.co.uk



WWW.
cityresidential
.co.uk