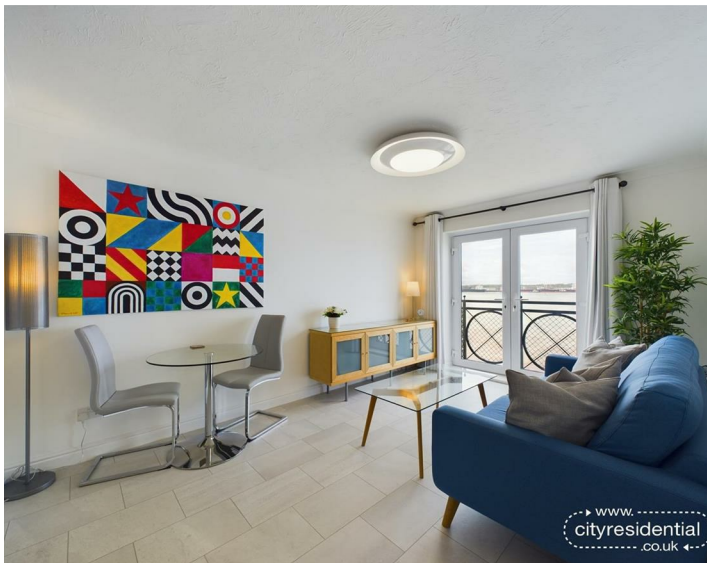




310 South Ferry Quay, Liverpool, L3 4EJ
Asking Price £260,000 Leasehold

www.cityresidential.co.uk



About the Property

Welcome to this stunning first floor apartment located on South Ferry Quay, Liverpool. This property boasts not only a prime location, but also exquisite features that make it a dream home for anyone looking for luxury living.

As you step into the apartment, you are welcomed by a bright and spacious hallway, benefitting from handy built-in storage cupboards. Heading into the open-plan living space, the direct views onto the River Mersey from the Juliette balcony will immediately catch your attention. The generously sized kitchen is sleek and modern, conveniently offering an additional utility room area. All three bedrooms also benefit from direct views over the River Mersey, with the master bedroom accommodating an ensuite alongside built-in wardrobe space.

An allocated and undercroft parking space is also available, alongside ample visitor parking available for guests.

The apartment is finished to the highest standard throughout, ensuring that every detail has been carefully considered to provide both comfort and style.

Contact us today to arrange a viewing, you do not want to miss out on this incredible property!

- Views of River Mersey
- Three double bedrooms
- Allocated secure parking
- Juliette balcony
- No chain
- Utility room



Energy Efficiency Rating

	Current	Potential
Very energy efficient - lower running costs		
(92 plus) A		
(81-91) B	81	81
(69-80) C		
(55-68) D		
(39-54) E		
(21-38) F		
(1-20) G		
Not energy efficient - higher running costs		
England & Wales	EU Directive 2002/91/EC	



City Residential
81/87 Victoria Street, The Old Haymarket, Liverpool L1 6DG
T: 0151 231 6100 F: 0151 231 6105
E: sales@cityresidential.co.uk



WWW.
cityresidential
.co.uk