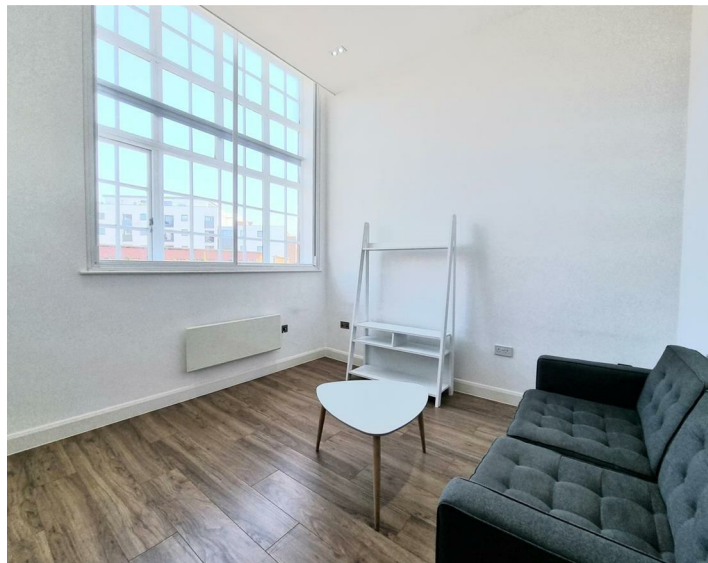




Apt 2 Chancery House, Liverpool, L1 3HJ
£925 PCM

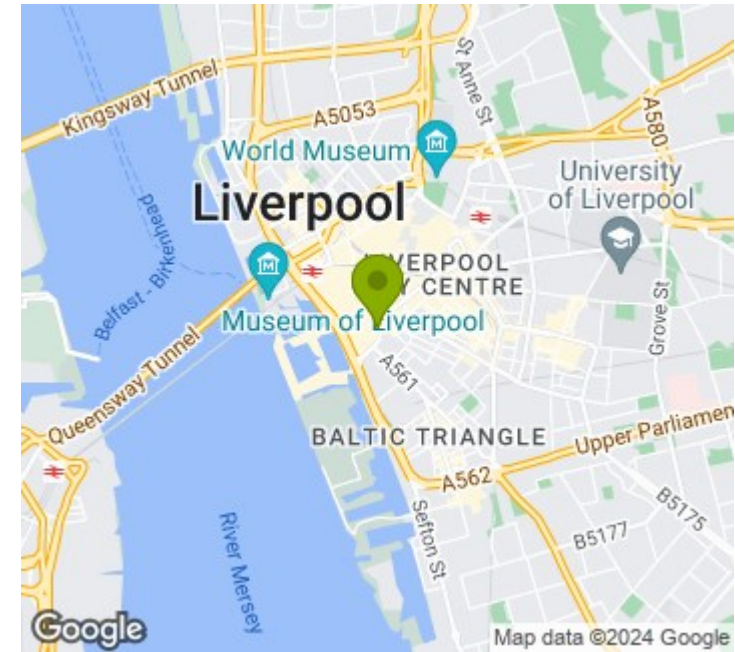
WWW.
cityresidential
.co.uk



About the Property

AVAILABLE NOW! Available to Let is this one bedroom, first floor apartment in Chancery House which has been completely renovated and converted in to a stunning residential development. Chancery House is a grade II listed building which was originally built in 1899. This beautiful conversion is situated in arguably the most desirable location in the City and offers close proximity to many of the local amenities including shopping at Liverpool One, many bars and restaurants and of course the world famous Albert Dock. The apartment briefly comprises; entrance hall, open plan living/kitchen area including a fully fitted kitchen with integrated appliances, a well appointment bathroom and master bedroom. This development is serviced by a lift to all floors. There is no parking available with this apartment. EPC Rating - C. Council Tax Band - B. A deposit amount of £1067.00 is payable upon moving in. Call us now on 0151 231 6100 to arrange a viewing.

- EPC Rating - C
- Council Tax Band - B



Energy Efficiency Rating

	Current	Potential
Very energy efficient - lower running costs		
(92 plus) A		
(81-91) B		
(69-80) C	76	76
(55-68) D		
(39-54) E		
(21-38) F		
(1-20) G		
Not energy efficient - higher running costs		
England & Wales	EU Directive 2002/91/EC	



City Residential
81/87 Victoria Street, The Old Haymarket, Liverpool L1 6DG
T: 0151 231 6100 F: 0151 231 6105
E: sales@cityresidential.co.uk



WWW.
cityresidential
.co.uk