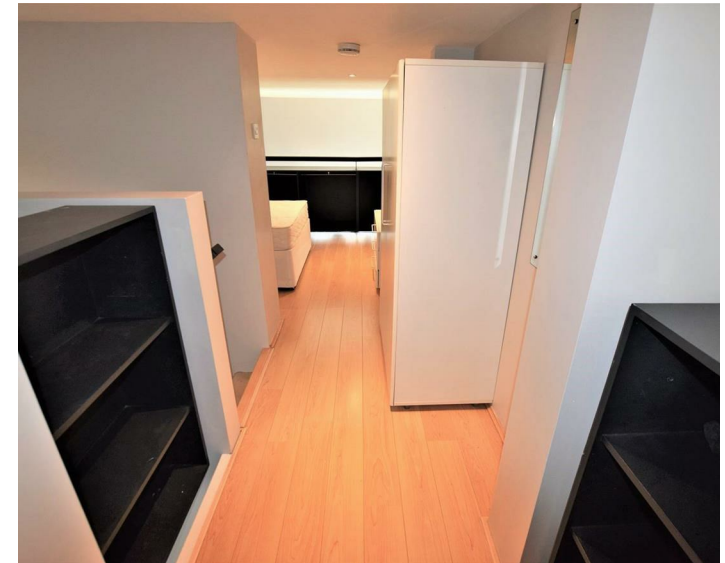
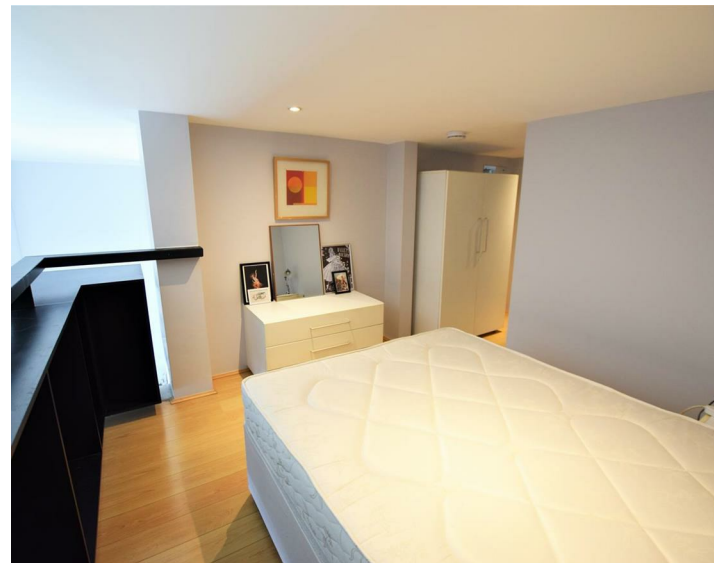


Apt G16 The Collegiate, Liverpool, L6 1HA  
£875 PCM

WWW.  
cityresidential  
.co.uk



## About the Property

Available to Let is this one bedroom duplex ground floor apartment at The Collegiate on Shaw Street. Ideal for anyone working at the Royal Liverpool Hospital, the apartment briefly comprises; entrance hall, open plan lounge /dining area, fully fitted kitchen with integrated appliances, stairs leading to double bedroom and fully tiled bathroom with shower over bath. A secure parking space is also included in the rental figure. This development is serviced by a lift to all floors. EPC Rating - D. Council Tax Band - C. A deposit amount of £1009.00 is payable upon moving in. Call us now on 0151 231 6100 to arrange a viewing.

- EPC Rating - D
- Council Tax Band - C



## Energy Efficiency Rating

|   | Current                    | Potential |
|---|----------------------------|-----------|
| Very energy efficient - lower running costs |                            |           |
| (92 plus) <b>A</b>                          |                            |           |
| (81-91) <b>B</b>                            |                            |           |
| (69-80) <b>C</b>                            |                            | <b>69</b> |
| (55-68) <b>D</b>                            | <b>59</b>                  |           |
| (39-54) <b>E</b>                            |                            |           |
| (21-38) <b>F</b>                            |                            |           |
| (1-20) <b>G</b>                             |                            |           |
| Not energy efficient - higher running costs |                            |           |
| <b>England &amp; Wales</b>                  | EU Directive<br>2002/91/EC |           |



City Residential  
81/87 Victoria Street, The Old Haymarket, Liverpool L1 6DG  
T: 0151 231 6100 F: 0151 231 6105  
E: sales@cityresidential.co.uk



WWW.  
**cityresidential**  
.co.uk