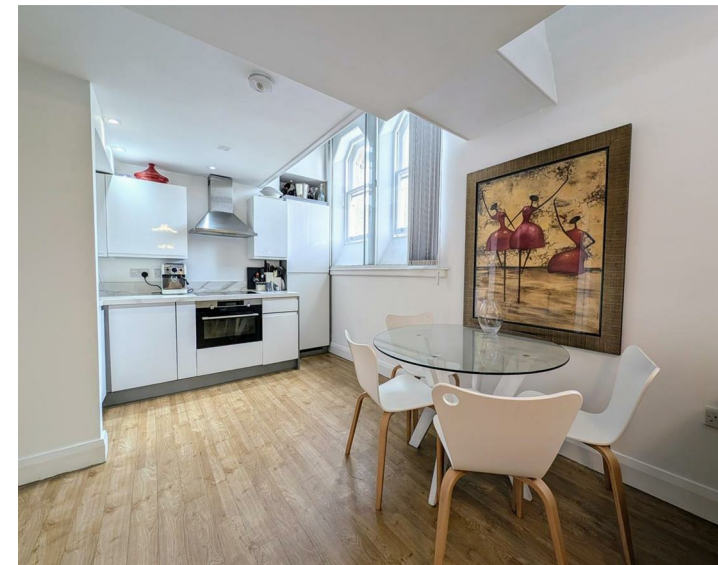




Apt 30 Westminster Chambers Crosshall Street, Liverpool, L1
£1,200 Per Month

WWW.
cityresidential
.co.uk



About the Property

AVAILABLE NOW!!

This stunning two bedroom duplex apartment located within the popular Westminster Chambers Development offers a blend of style, comfort, and convenience.

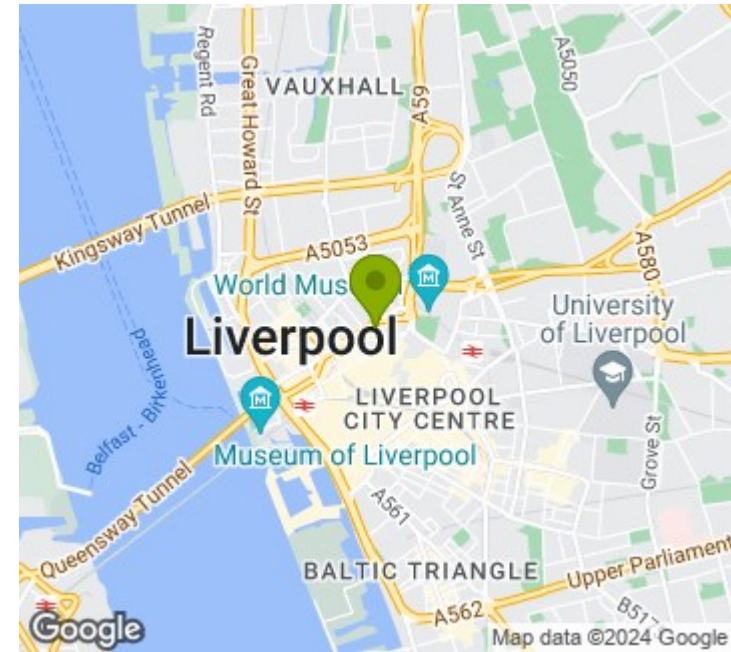
Located in L1, the heart of Liverpool, you'll have easy walking distance access to shops, restaurants, train stations and university. Whether you're a student or a working professional, this apartment is an excellent choice.

The property is fully furnished to a high specification and briefly comprises: Entrance Hall, Open Plan Living/Dining area and a modern fitted Kitchen, two mezzanine style double bedrooms, one with an ensuite and a family bathroom.

This development is serviced by a lift to all floors.

We expect high demand for this stunning property, therefore early viewing is strongly advised. Contact City Residential today!!

- Available Now
- Amazing Location
- Must Be Viewed
- Fully Furnished to a high specification
- Mezzanine Style Bedrooms
- EPC Rating - E
- Deposit Payable £1384
- Council Tax Band - C



Energy Efficiency Rating

	Current	Potential
Very energy efficient - lower running costs		
(92 plus) A		
(81-91) B		
(69-80) C		80
(55-68) D		
(39-54) E	40	
(21-38) F		
(1-20) G		
Not energy efficient - higher running costs		
England & Wales	EU Directive 2002/91/EC	



City Residential
81/87 Victoria Street, The Old Haymarket, Liverpool L1 6DG
T: 0151 231 6100 F: 0151 231 6105
E: sales@cityresidential.co.uk



WWW.
cityresidential
.co.uk