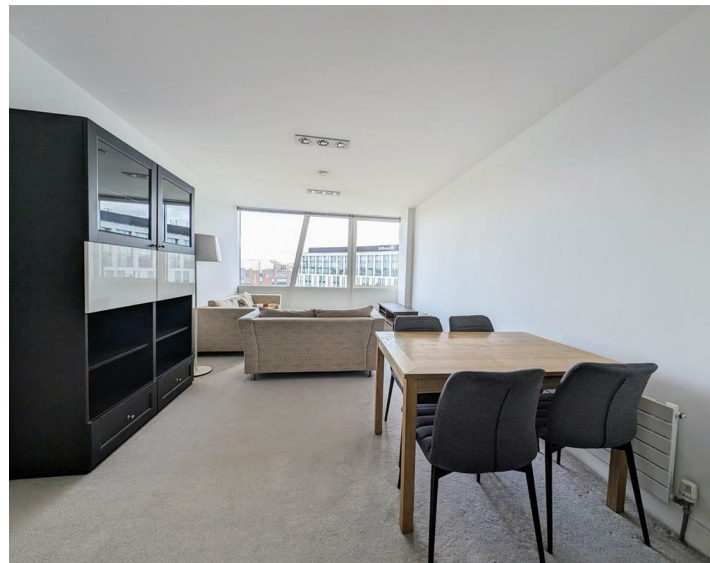




Apt B805 One Park West, Liverpool, L1 8ND  
£1,300 PCM

WWW.  
cityresidential  
.co.uk



## About the Property

AVAILABLE FROM 1st JULY!

This beautifully presented two bedroom apartment in the prestigious One Park West Development. The property is situated in a prime position in the heart of Liverpool ONE and offers close proximity to local restaurant, shops and bars.

The property is located on the eight floor and offers views over chavasse park. The apartment briefly comprises; entrance hall, open plan living/dining area, fully fitted kitchen, master bedroom with en-suite shower room, second double bedroom and family bathroom.

A secure allocated parking space is also included in the rental figure. This development is serviced by a lift to all floors.

EPC Rating - B. Council Tax Band - C. A deposit amount of £1,500 is payable upon moving in. Call us now to arrange a viewing.

- Parking Included
- Fully Furnished
- Deposit - £1500
- EPC Rating - B
- Council Tax Band - C



## Energy Efficiency Rating

	Current	Potential
Very energy efficient - lower running costs		
(92 plus) <b>A</b>		
(81-91) <b>B</b>	<b>81</b>	<b>81</b>
(69-80) <b>C</b>		
(55-68) <b>D</b>		
(39-54) <b>E</b>		
(21-38) <b>F</b>		
(1-20) <b>G</b>		
Not energy efficient - higher running costs		
<b>England &amp; Wales</b>	EU Directive 2002/91/EC	



City Residential

81/87 Victoria Street, The Old Haymarket, Liverpool L1 6DG

T: 0151 231 6100 F: 0151 231 6105

E: sales@cityresidential.co.uk



WWW.  
cityresidential  
.co.uk