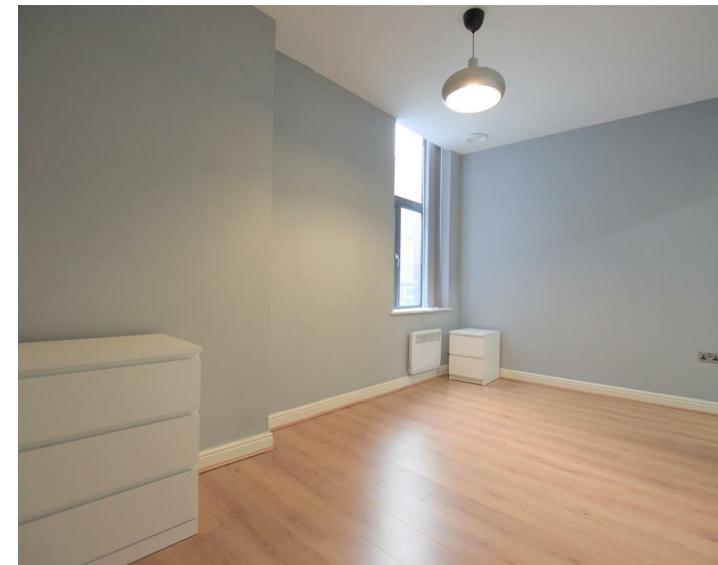




Apt 104 Princes Buildings Dale Street, Liverpool, L2 2HT  
£1,000 PCM

WWW.  
cityresidential  
.co.uk

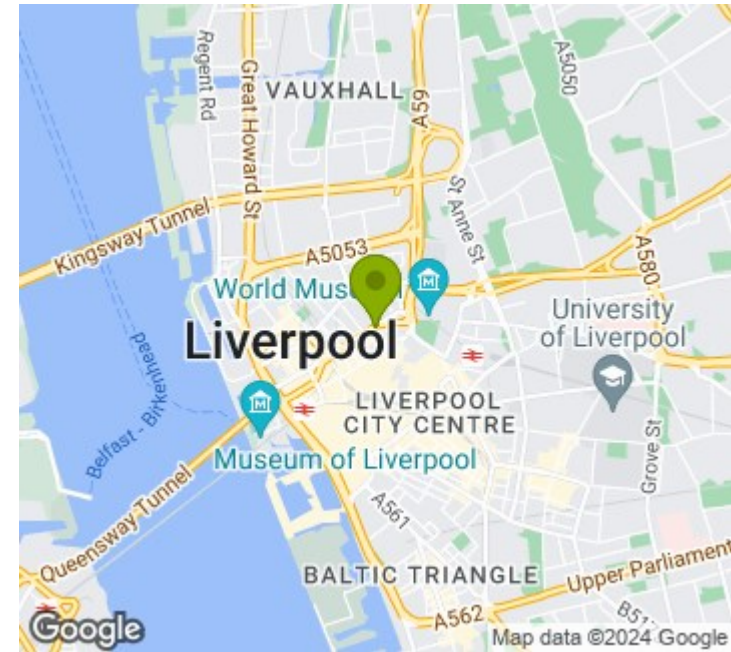


## About the Property

Available to let and abundant with character and charm! Do not miss the opportunity to rent this newly completed two bedroom, first floor apartment! Situated in the desirable Princes Buildings on Dale Street, the property provides convenient access to many local amenities including a wide range of stylish bars and restaurants, The Met Quarter and The Liverpool One Shopping Centre. Train travel is also easily accessible with Moorfields Train station being around the corner. The accommodation briefly comprises; entrance hall, living/dining room, open plan fully fitted kitchen, two double bedrooms with an ensuite bathroom to the main bedroom and a family bathroom. Early viewing is highly recommended to truly appreciate the accommodation on offer so call us now to arrange. Princes Buildings is serviced by a lift to all floors.

EPC - E. Council Tax Band - C. A deposit amount of £1,153.00 is payable upon moving in. Call us now on 0151 231 6100 to arrange a viewing

- Two Bedroom
- Two Bathroom
- EPC - E
- Council Tax Band - C
- Deposit Amount - £1,153.00



## Energy Efficiency Rating

	Current	Potential
Very energy efficient - lower running costs		
(92 plus) <b>A</b>		
(81-91) <b>B</b>		
(69-80) <b>C</b>		
(55-68) <b>D</b>		<b>66</b>
(39-54) <b>E</b>	<b>39</b>	
(21-38) <b>F</b>		
(1-20) <b>G</b>		
Not energy efficient - higher running costs		
<b>England &amp; Wales</b>	EU Directive 2002/91/EC	



City Residential  
 81/87 Victoria Street, The Old Haymarket, Liverpool L1 6DG  
 T: 0151 231 6100 F: 0151 231 6105  
 E: sales@cityresidential.co.uk



WWW.  
**cityresidential**  
 .co.uk