



30 Eden Square, Liverpool, L2 2DQ
£179,000 Leasehold

www.
cityresidential
.co.uk



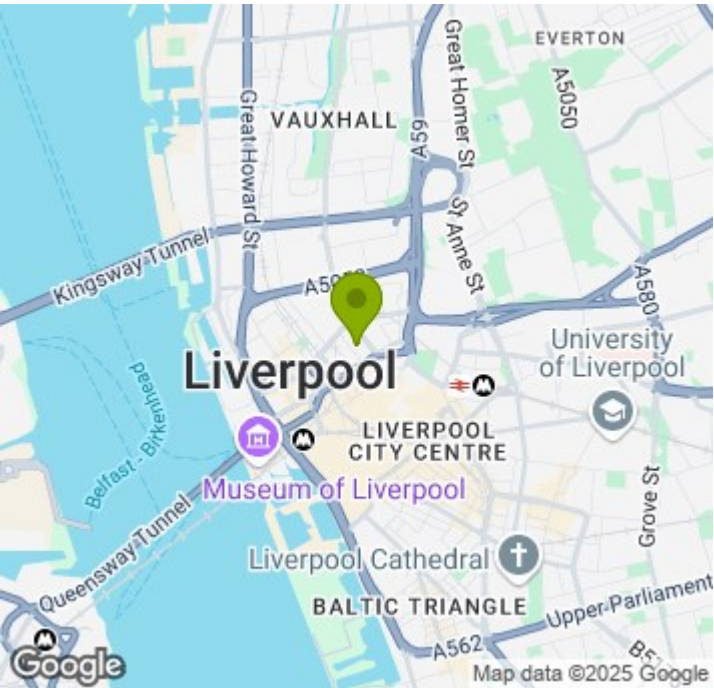
About the Property

Your new home awaits... We are delighted to offer for sale this immaculately presented and well maintained two bedroom apartment in the sought after and highly regarded Eden Square development.

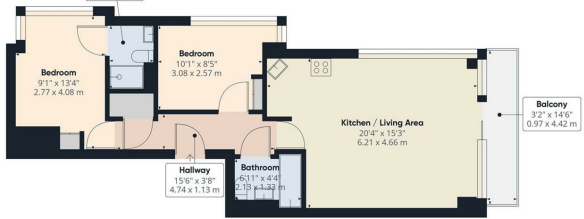
Finished to a high standard with a modern bathroom and kitchen which includes integrated appliances, the apartment is designed with a contemporary open plan living area to maximise space. The property also benefits from a balcony with views over looking the city and a secure allocated parking space.

The property briefly comprises: entrance hall, open plan living and kitchen space, master bedroom with ensuite, second double bedroom, family bathroom and car parking.

This property must be on your viewing list!



- Parking
- Balcony
- Two double bedrooms
- Chain free & ready to move into
- Central location



Approximate total area*
58.8 sq'
58.97 sq'
(*) Excluding balconies and terraces
While every attempt has been made to ensure accuracy, all measurements are approximate and to view the floor plan is for illustrative purposes only
GRAFTON

Energy Efficiency Rating		
	Current	Potential
Very energy efficient - lower running costs		
(92 plus) A	73	85
(81-91) B		
(69-80) C		
(55-68) D		
(39-54) E		
(21-38) F		
(1-20) G		
Not energy efficient - higher running costs		
England & Wales	EU Directive 2002/91/EC	