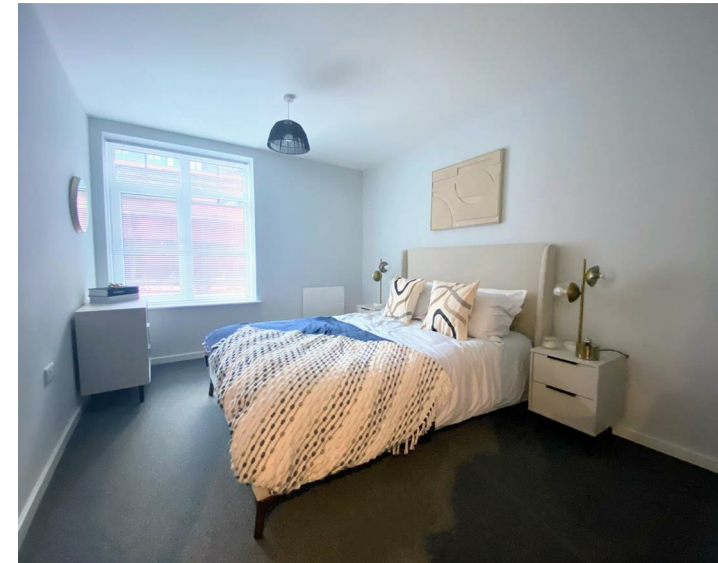
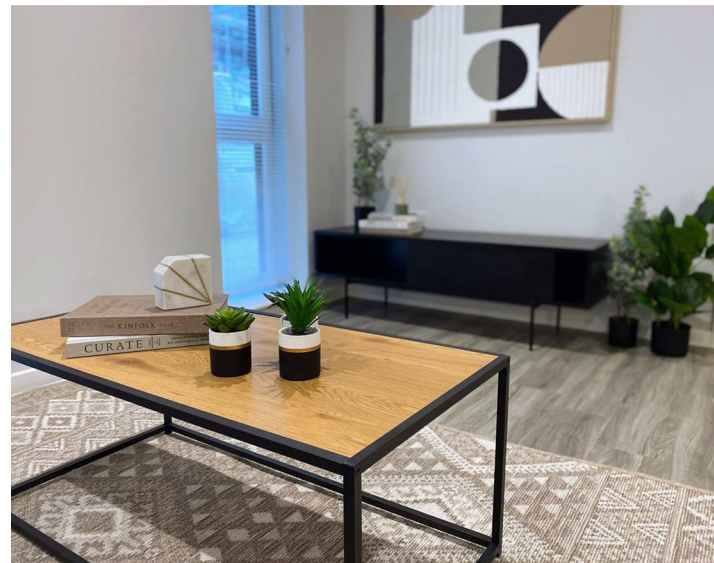




Apt 15 All Six House, Liverpool, L2 7ZH  
£900 (From) Per Calendar Month

WWW.  
cityresidential  
.co.uk





## About the Property

END OF JUNE MOVE IN

View and Reserve now!

Do not miss this fantastic opportunity to secure an apartment in the newly developed All Six House. Due to be ready to move into early June, we are offering tenants an early opportunity to reserve one of these stunning apartments.

Located on Derby Square, the development is excellently positioned for the extensive mix of bars, restaurants, shops and entertainment options located on both Castle Street and in the Liverpool One shopping centre. The development also benefits from excellent transport links with James Street Station being literally on your door step.

The apartment benefits from ultra modern specification which is finished to a high standard and offers the very best of City Centre Living.

One and Two Bedrooms available on a furnished or unfurnished basis, depending on your preferred option. On your viewing you will be shown apartments within your budget.

Limited parking is available upon request at an additional cost of £75pcm.

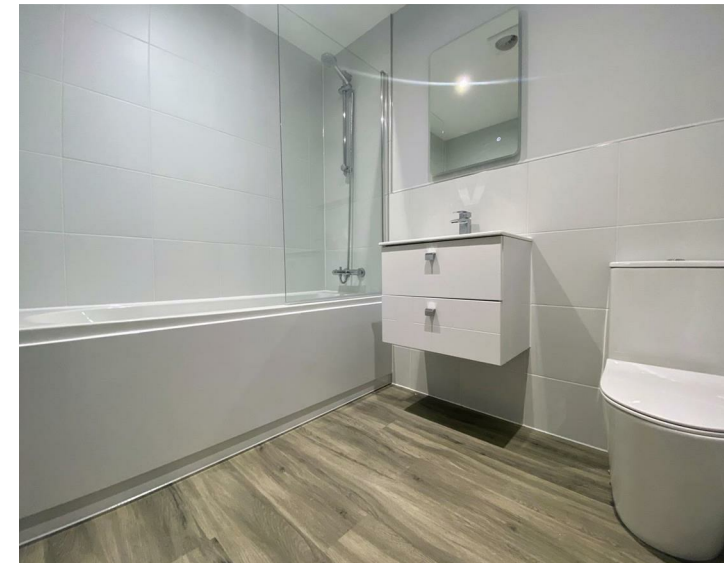
Contact us today to arrange a viewing!

- Newly Completed Development!
- Move In Early MAY!
- Offered On A Furnished or Unfurnished Basis
- One & Two Bedrooms Available
- Limited Parking Spaces Are Available Upon Request At Additional Cost
- Be Quick, We Anticipate High Demand!



## Energy Efficiency Rating

	Current	Potential
Very energy efficient - lower running costs		
(92 plus) <b>A</b>		
(81-91) <b>B</b>		
(69-80) <b>C</b>		
(55-68) <b>D</b>		
(39-54) <b>E</b>		
(21-38) <b>F</b>		
(1-20) <b>G</b>		
Not energy efficient - higher running costs		
<b>England &amp; Wales</b>	EU Directive 2002/91/EC	



City Residential

81/87 Victoria Street, The Old Haymarket, Liverpool L1 6DG

T: 0151 231 6100 F: 0151 231 6105

E: sales@cityresidential.co.uk



WWW.  
cityresidential  
.co.uk