



902 West Tower, Liverpool, L3 9PE

Asking Price £225,000 Leasehold

www.cityresidential.co.uk



About the Property

Style, sophistication and unrivalled panoramic views of the city!

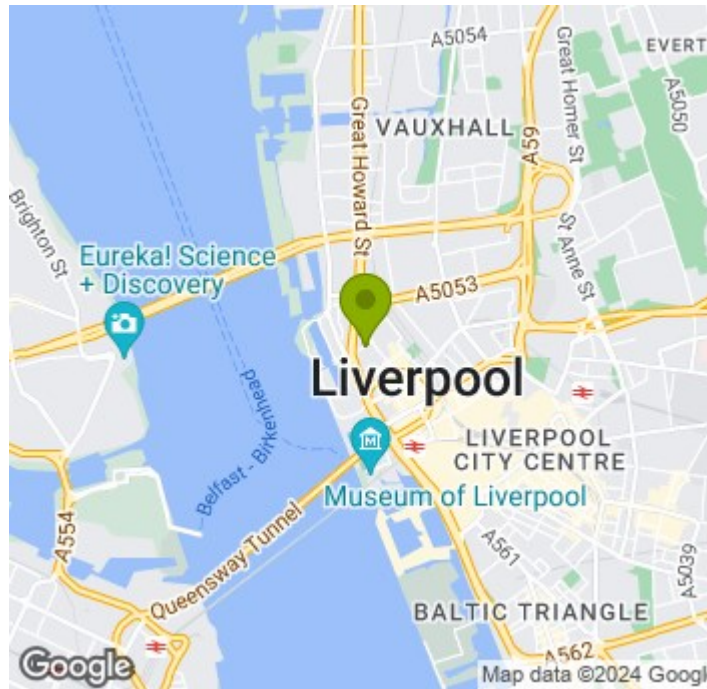
Looking for an executive apartment within a vibrant environment of leisure, business and culture? Then this this spectacular apartment in the exclusive West Tower is a must see!

Located on the 9th floor, within one of the most sought after buildings in the city, West Tower development is situated on Brook Street within the ever popular Business District of Liverpool City Centre. Offering close proximity to many of the city's local amenities, including bars, restaurants and historical culture.

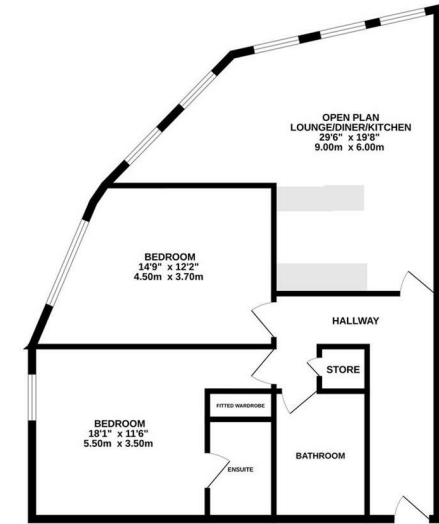
The accommodation which is tastefully presented throughout briefly comprises of; entrance hall, living/dining room with floor to ceiling windows providing panoramic views of the city, towards the Royal Liver Buildings and the River Mersey. Modern fully fitted kitchen, master bedroom with fitted wardrobes and en-suite shower room, a further double bedroom and a separate family bathroom. The property also contains an integrated air conditioning system.

The prestigious development also benefits from 24/7 concierge service.

We expect high demand for this property, so book early to avoid disappointment.



GROUND FLOOR
871 sq.ft. (80.9 sq.m.) approx.



TOTAL FLOOR AREA: 871 sq.ft. (80.9 sq.m.) approx.
While every attempt has been made to ensure the accuracy of the floorplan contained herein, measurements of floors, windows, doors and any other items are approximate and no responsibility is taken for any error, omission or mis-statement. The layout, colour and appearance shown have not been tested and may vary and are subject to change without notice. The floorplan is provided for information only and does not constitute an offer of any property. Made with Metrepro (2023)

Energy Efficiency Rating

	Current	Potential
Very energy efficient - lower running costs		
(92 plus) A		
(81-91) B	84	84
(69-80) C		
(55-68) D		
(39-54) E		
(21-38) F		
(1-20) G		
Not energy efficient - higher running costs		
England & Wales	EU Directive 2002/91/EC	



City Residential
81/87 Victoria Street, The Old Haymarket, Liverpool L1 6DG
T: 0151 231 6100 F: 0151 231 6105
E: sales@cityresidential.co.uk



WWW.
cityresidential
.co.uk