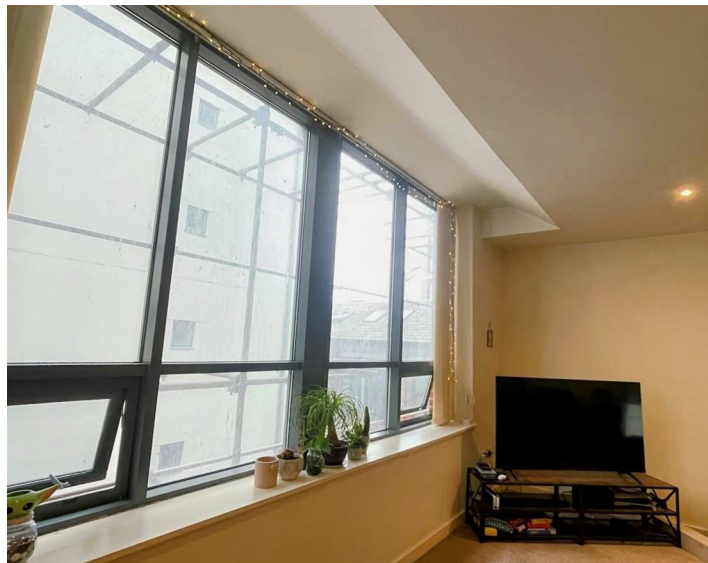




11 Jenkinsons Warehouse 40 Pall Mall, Liverpool, L3 6ES
Asking Price £100,000 Leasehold

www.
cityresidential
.co.uk



About the Property

Looking for a sizeable studio property home or investment opportunity? This could be the one for you!

Located on the second floor of Jenkinsons Warehouse on Pall Mall, the property offers city centre living in the heart of Liverpool's bustling business district. With so many amenities within easy reach, including the city's vast array of restaurants, bars, culture, it would be perfect for those looking to work and live in the city.

Currently rented at £825pcm, the property would produce a gross yield of at least 9.9% if you were looking to purchase with tenant in situ. The property is also available with vacant possession.

The property briefly comprises of; an entrance hallway, leading onto the bathroom and then living/dining area, with a separated kitchen and bedroom area.

At such an attractive price, the property is likely to sell quickly, so book soon to avoid disappointment!



Energy Efficiency Rating

	Current	Potential
Very energy efficient - lower running costs		
(92 plus) A		
(81-91) B		
(69-80) C	78	78
(55-68) D		
(39-54) E		
(21-38) F		
(1-20) G		
Not energy efficient - higher running costs		
England & Wales	EU Directive 2002/91/EC	



City Residential

81/87 Victoria Street, The Old Haymarket, Liverpool L1 6DG

T: 0151 231 6100 F: 0151 231 6105

E: sales@cityresidential.co.uk



WWW.
cityresidential
.co.uk