



HOWITT ROAD,

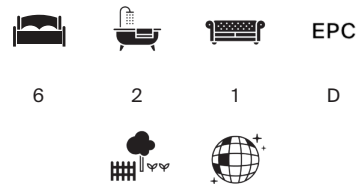
London NW3





# A BEAUTIFULLY RENOVATED MODERN HOME

This stylish, light-filled family home is set on a sought-after residential street in Belsize Park. Spanning approximately 2,735 sq ft across three main floors and a beautifully designed loft extension, it offers a well-planned layout that blends elegant living with everyday comfort.



Local Authority: London Borough of Camden

Council Tax band: G

Tenure: Freehold

Guide Price: £4,350,000





## EXPANSIVE FAMILY LIVING WITH DESIGNER FINISHES

This exceptional home offers a stylish reception room leading to a spacious open-plan kitchen and dining area with premium finishes and wide glazed doors opening to a landscaped private garden—ideal for indoor-outdoor living.

The first floor boasts a luxurious principal suite with a walk-through dressing room and en-suite, a second double bedroom (currently a study), and a utility room. The second floor includes three double bedrooms with built-in storage and a large family bathroom with a walk-in shower. A loft extension provides flexible space for a sixth bedroom, gym, or playroom.

Additional features include a dry cellar, custom cabinetry, smart home tech with zoned underfloor heating, Wi-Fi-enabled appliances, an intercom system, and a fully integrated fire suppression system.



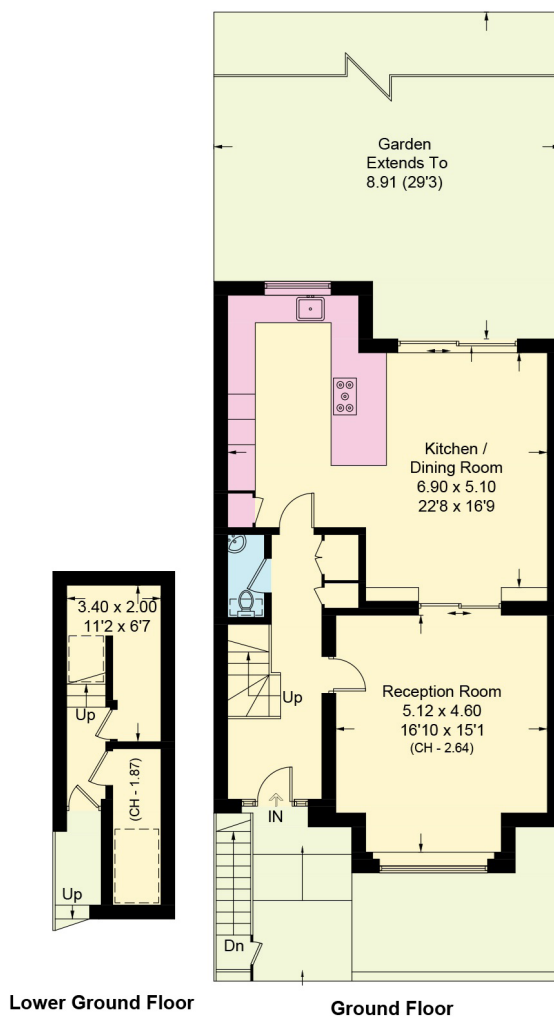




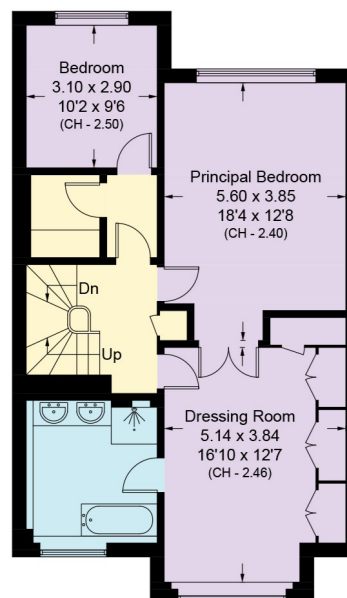




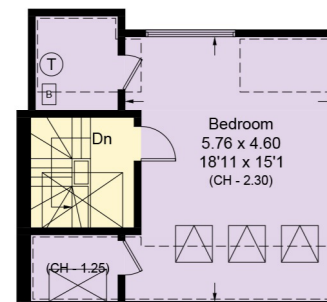




□ = Reduce head height below 1.5m

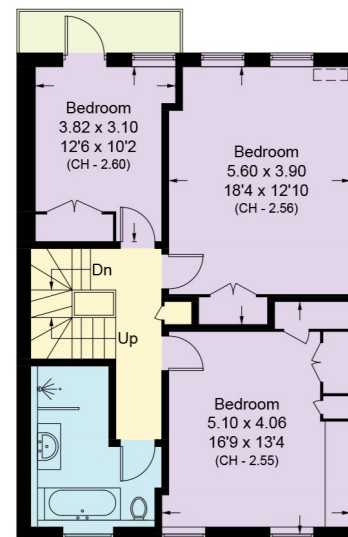


First Floor



Third Floor

Approximate Area = 38.9 sq m / 419 sq ft  
Including Limited Use Area (14.7 sq m / 158 sq ft)



Second Floor

(Including Basement / Loft Room)  
Approximate Gross Internal Area = 254.1 sq m / 2735 sq ft

This plan is for layout guidance only. Not drawn to scale unless stated. Windows and door openings are approximate. Whilst every care is taken in the preparation of this plan, please check all dimensions, shapes and compass bearings before making any decisions reliant upon them. (ID767266)

We would be delighted  
to tell you more.

**Nathan White**  
+44 20 3833 9813  
nathan.white@knightfrank.com

**Knight Frank Belsize Park**  
2c England's Lane,  
London NW3 4TG

**knightfrank.co.uk**

**Your partners in property**

1. Particulars: These particulars are not an offer or contract, nor part of one. You should not rely on statements given by Knight Frank in the particulars, by word of mouth or in writing ("information") as being factually accurate about the property, its condition or its value. Neither Knight Frank nor any joint agent has any authority to make any representations about the property, and accordingly any information given is entirely without responsibility on the part of Knight Frank. 2. Material Information: Please note that the material information is provided to Knight Frank by third parties and is provided here as a guide only. While Knight Frank has taken steps to verify this information, we advise you to confirm the details of any such material information prior to any offer being submitted. If we are informed of changes to this information by the seller or another third party, we will use reasonable endeavours to update this as soon as practical. 3. Photos, Videos etc: The photographs, property videos and virtual viewings etc. show only certain parts of the property as they appeared at the time they were taken. Areas, measurements and distances given are approximate only. 4. Regulations etc: Any reference to alterations to, or use of, any part of the property does not mean that any necessary planning, building regulations or other consent has been obtained. A buyer must find out by inspection or in other ways that these matters have been properly dealt with and that all information is correct. 5. Fixtures and fittings: A list of the fitted carpets, curtains, light fittings and other items fixed to the property which are included in the sale (or may be available by separate negotiation) will be provided by the Seller's Solicitors. 6. VAT: The VAT position relating to the property may change without notice. 7. To find out how we process Personal Data, please refer to our Group Privacy Statement and other notices at <https://www.knightfrank.com/legals/privacy-statement>.

Particulars dated May 2025 Photographs and videos dated May 2025. All information is correct at the time of going to print. Knight Frank is the trading name of Knight Frank LLP. Knight Frank LLP is a limited liability partnership registered in England and Wales with registered number OC305934. Our registered office is at 55 Baker Street, London W1U 8AN. We use the term 'partner' to refer to a member of Knight Frank LLP, or an employee or consultant. A list of members names of Knight Frank LLP may be inspected at our registered office. If you do not want us to contact you further about our services then please contact us by either calling 020 3544 0692, email to [marketing.help@knightfrank.com](mailto:marketing.help@knightfrank.com) or post to our UK Residential Marketing Manager at our registered office (above) providing your name and address.