

Maxwell Court, Eton Avenue NW3



Maxwell Court, Eton Avenue NW3

A two bedroom two bathroom duplex flat on the first and second floors of a beautiful redbrick period house conveniently located between Belsize Park and Swiss Cottage. The apartment has a balcony and use of the communal garden.

Offering approximately 973 sq ft of internal accommodation, as you enter on the first floor there is a fully integrated kitchen and separate reception room with a balcony, on the second floor are two double bedrooms and two bathrooms (an en-suite). The entire flat is south-facing with views over the communal gardens.



Offers in excess of: £975,000

Tenure: Share of freehold plus leasehold, approximately 956 years remaining

Service charge: Please note we have been unable to confirm the service charge & ground rent amount and review periods. You should ensure you make your own enquiries.

Local authority: London Borough of Brent

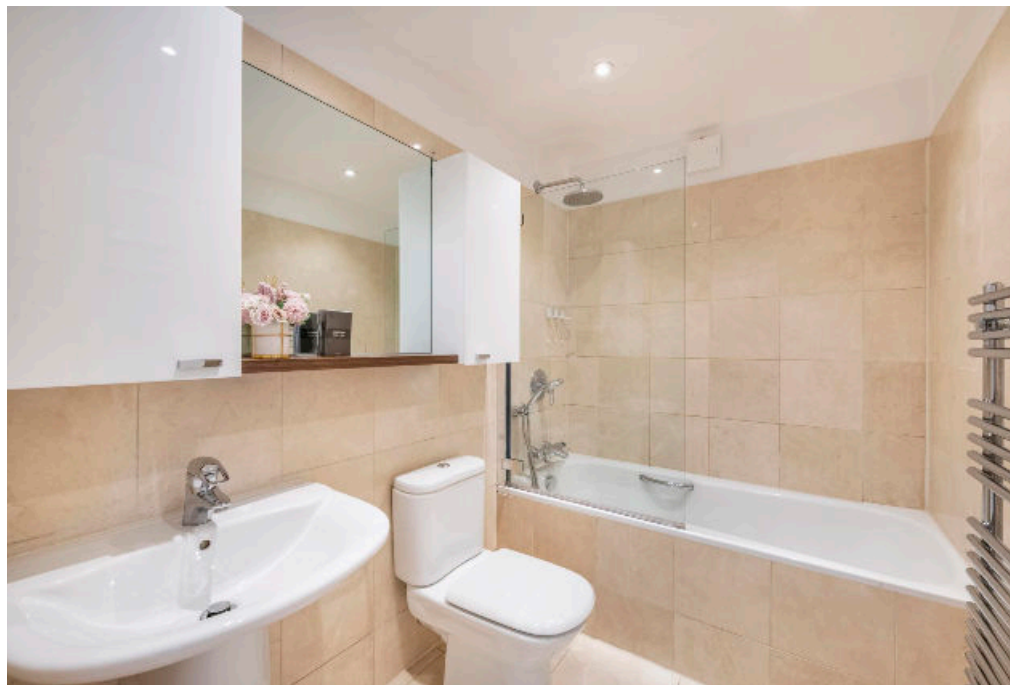
Council tax band: F

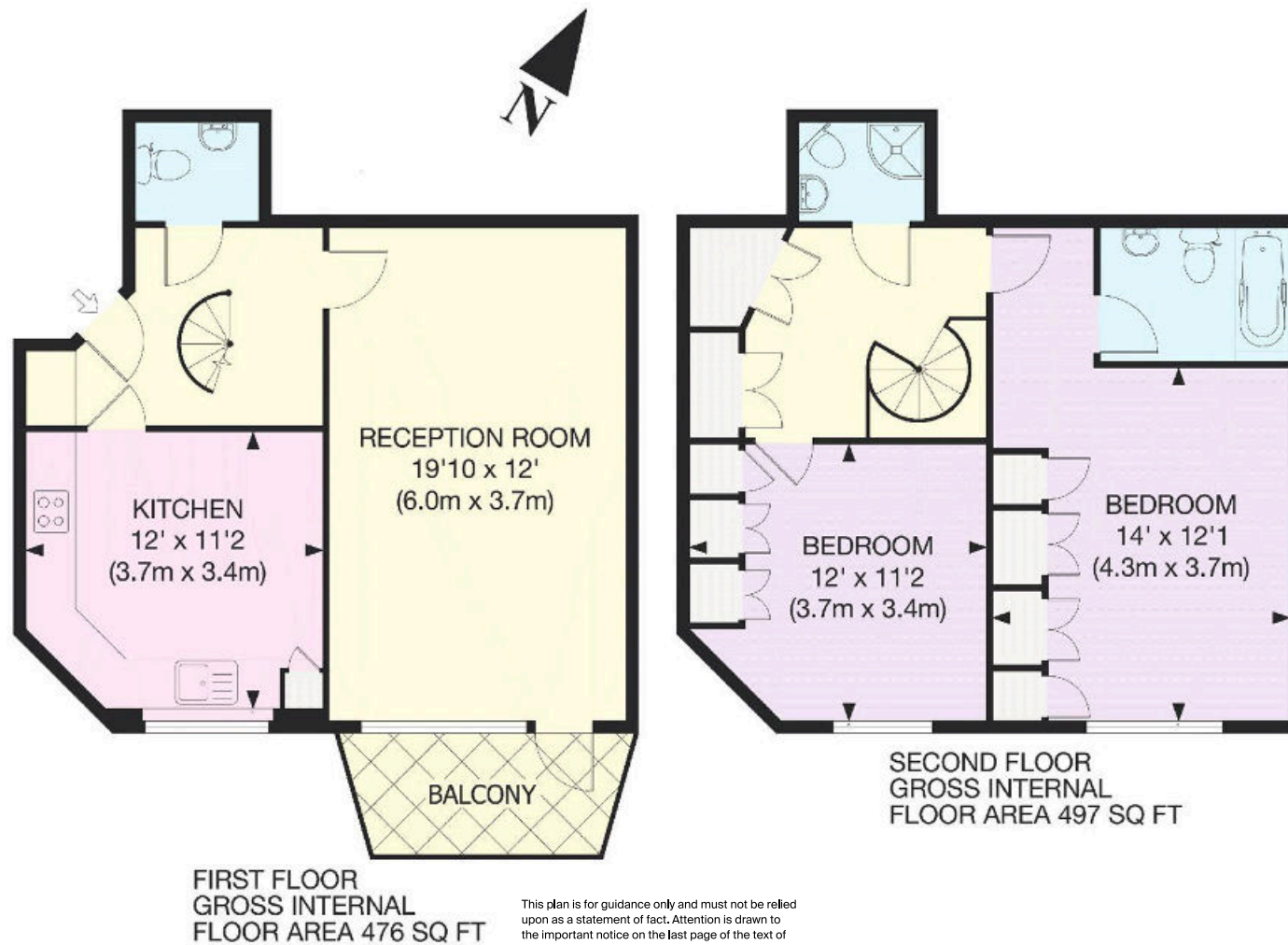






Eton Avenue is conveniently located to the amenities on England's Lane, Belsize Village, Finchley Road and Primrose Hill. Swiss Cottage Underground Station (Jubilee Line) is 0.1 miles away, whilst Belsize Park Underground Station (Northern Line) is 0.7 miles away.





APPROX. GROSS INTERNAL FLOOR AREA 973 SQ FT / 90 SQ M

Knight Frank

2C Englands Lane

Belsize Park

NW3 4TG

[knightfrank.co.uk](https://www.knightfrank.co.uk)

We would be delighted to tell you more

Orly Lehmann

020 3815 3354

orly.lehmann@knightfrank.com



Fixtures and fittings: A list of the fitted carpets, curtains, light fittings and other items fixed to the property which are included in the sale (or may be available by separate negotiation) will be provided by the Seller's Solicitors.

Important Notice: 1. Particulars: These particulars are not an offer or contract, nor part of one. You should not rely on statements by Knight Frank LLP in the particulars or by word of mouth or in writing ("information") as being factually accurate about the property, its condition or its value. Neither Knight Frank LLP nor any joint agent has any authority to make any representations about the property, and accordingly any information given is entirely without responsibility on the part of the agents, seller(s) or lessor(s). 2. Photos, Videos etc: The photographs, property videos and virtual viewings etc. show only certain parts of the property as they appeared at the time they were taken. Areas, measurements and distances given are approximate only. 3. Regulations etc: Any reference to alterations to, or use of, any part of the property does not mean that any necessary planning, building regulations or other consent has been obtained. A buyer or lessee must find out by inspection or in other ways that these matters have been properly dealt with and that all information is correct. 4. VAT: The VAT position relating to the property may change without notice. 5. To find out how we process Personal Data, please refer to our Group Privacy Statement and other notices at <https://www.knightfrank.com/legals/privacy-statement>. Particulars dated March 2024. Photographs and videos dated March 2024.

Knight Frank is the trading name of Knight Frank LLP. Knight Frank LLP is a limited liability partnership registered in England and Wales with registered number OC305934. Our registered office is at 55 Baker Street, London W1U 8AN where you may look at a list of members' names. If we use the term 'partner' when referring to one of our representatives, that person will either be a member, employee, worker or consultant of Knight Frank LLP and not a partner in a partnership. If you do not want us to contact you further about our services then please contact us by either calling 020 3544 0692, email to marketing.help@knightfrank.com or post to our UK Residential Marketing Manager at our registered office (above) providing your name and address.