



Belsize Park Gardens, Belsize Park, London NW3



Belsize Park Gardens, Belsize Park **NW3**

A beautiful first floor apartment with outside space (balcony, terrace and use of a communal garden), set within a stucco fronted house in Belsize Park.

This bright and well configured apartment was completely refurbished (with an architect) by the current owners and offers contemporary, high specification interiors alongside high ceilings and fantastic natural light throughout. There is a spacious reception room, fully integrated kitchen with access to a balcony, an impressive principal bedroom with access to a terrace overlooking the communal garden and en suite bathroom. A second double bedroom, family bathroom, utility room and third single bedroom currently used as a study complete the home. Further benefits include double glazing throughout, ample storage, share of the freehold and side access to the well maintained communal garden.



Asking price: £1,850,000

Tenure: Share of freehold plus leasehold, approximately 998 years remaining

Service charge: Please note that we have been unable to confirm the service charge, or the date of the next review. You should ensure that you or your advisors make your own inquiries.

Local authority: London Borough of Camden

Council tax band: G

Belsize Park Gardens is conveniently located to all the amenities in Belsize Village, Haverstock Hill and England's Lane. It is also located within 0.3 miles of Belsize Park Underground Station (Northern Line) and 0.5 miles of Swiss Cottage Underground Station (Jubilee Line). All distances are approximate.







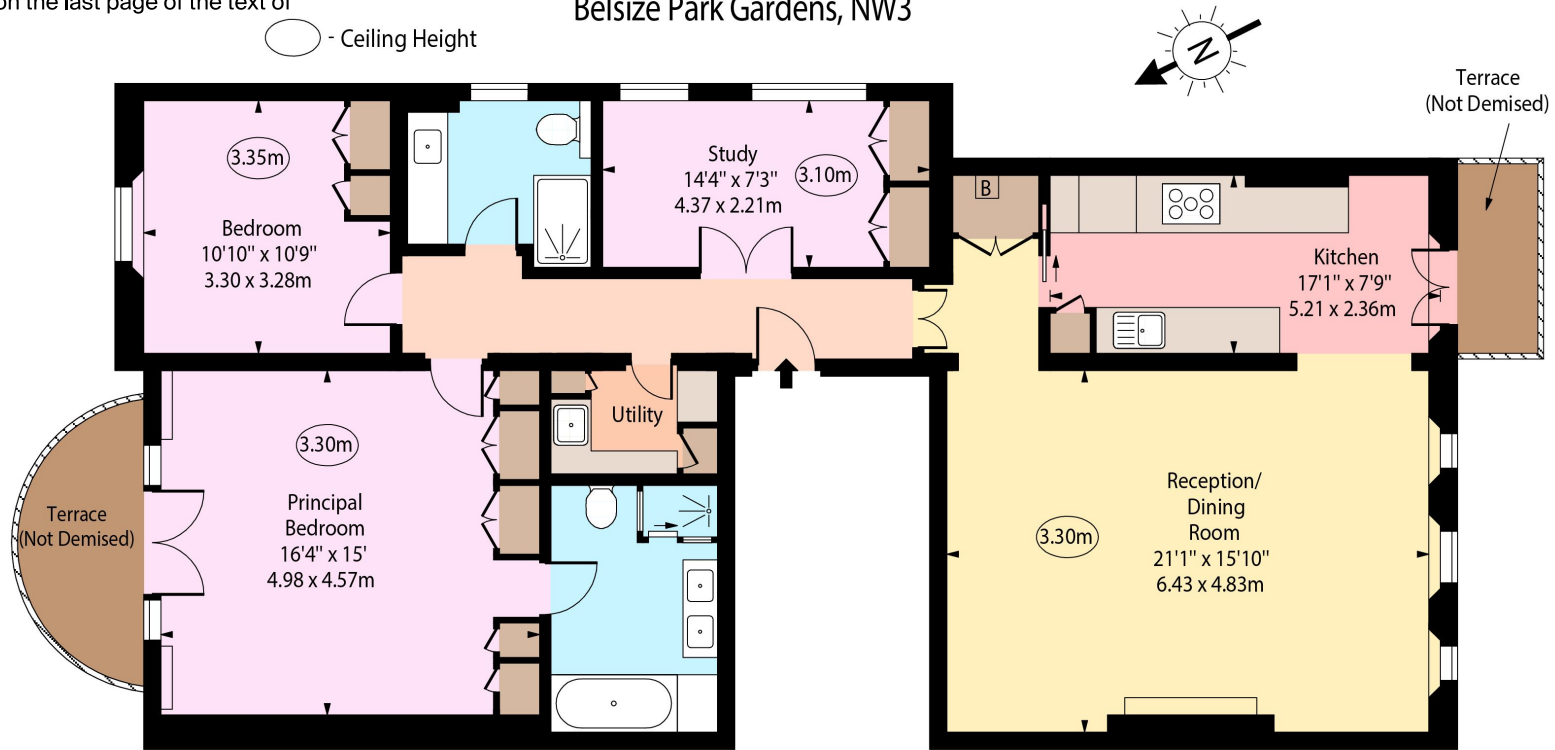




This plan is for guidance only and must not be relied upon as a statement of fact. Attention is drawn to the important notice on the last page of the text of the Particulars.

○ - Ceiling Height

Belsize Park Gardens, NW3



First Floor

Approx Gross Internal Area 1326 Sq Ft - 123.19 Sq M

For Illustration Purposes Only - Not To Scale

Knight Frank
Belsize Park
 2C England's Ln
 Belsize Park
 NW3 4TG
knightfrank.co.uk

We would be delighted to tell you more
Orly Lehmann
 020 3815 3350
orly.lehmann@knightfrank.com



Fixtures and fittings: A list of the fitted carpets, curtains, light fittings and other items fixed to the property which are included in the sale (or may be available by separate negotiation) will be provided by the Seller's Solicitors.

Important Notice: 1. Particulars: These particulars are not an offer or contract, nor part of one. You should not rely on statements by Knight Frank LLP in the particulars or by word of mouth or in writing ("information") as being factually accurate about the property, its condition or its value. Neither Knight Frank LLP nor any joint agent has any authority to make any representations about the property, and accordingly any information given is entirely without responsibility on the part of the agents, seller(s) or lessor(s). 2. Photos, Videos etc: The photographs, property videos and virtual viewings etc. show only certain parts of the property as they appeared at the time they were taken. Areas, measurements and distances given are approximate only. 3. Regulations etc: Any reference to alterations to, or use of, any part of the property does not mean that any necessary planning, building regulations or other consent has been obtained. A buyer or lessee must find out by inspection or in other ways that these matters have been properly dealt with and that all information is correct. 4. VAT: The VAT position relating to the property may change without notice. 5. To find out how we process Personal Data, please refer to our Group Privacy Statement and other notices at <https://www.knightfrank.com/legals/privacy-statement>.

Particulars dated May 2023. Photographs and videos dated May 2023.

All information is correct at the time of going to print. Knight Frank is the trading name of Knight Frank LLP. Knight Frank LLP is a limited liability partnership registered in England and Wales with registered number OC305934. Our registered office is at 55 Baker Street, London W1U 8AN. We use the term 'partner' to refer to a member of Knight Frank LLP, or an employee or consultant. A list of members names of Knight Frank LLP may be inspected at our registered office. If you do not want us to contact you further about our services then please contact us by either calling 020 3544 0692, email to marketing.help@knightfrank.com or post to our UK Residential Marketing Manager at our registered office (above) providing your name and address.