



**OVER 60?**

Secure this property  
for up to **59% less!**

**Guide Price**

**£410,000**

**Leasehold**

2x  1x  2x 

**Furnace Mere,  
Horsmonden, Kent,  
TN12**

*Wards*  
Helping you move forwards





## Main features

- Offered with the option of buying a minimum of 25% share
- Immaculately presented throughout with new build warranty in effect
- Driveway and car charging point
- Located in popular village of Horsmonden
- Beautifully secluded private garden to the rear

## Accommodation

### GROUND FLOOR

Entrance Hall

Kitchen/Diner: 15'8 x 9'7 (4.78m x 2.92m)

Lounge: 13'6 x 11'3 (4.12m x 3.43m)

Bedroom 1: 14'0 x 11'3 (4.27m x 3.43m)

Bedroom 2: 11'7 x 10'0 (3.53m x 3.05m)

Bathroom

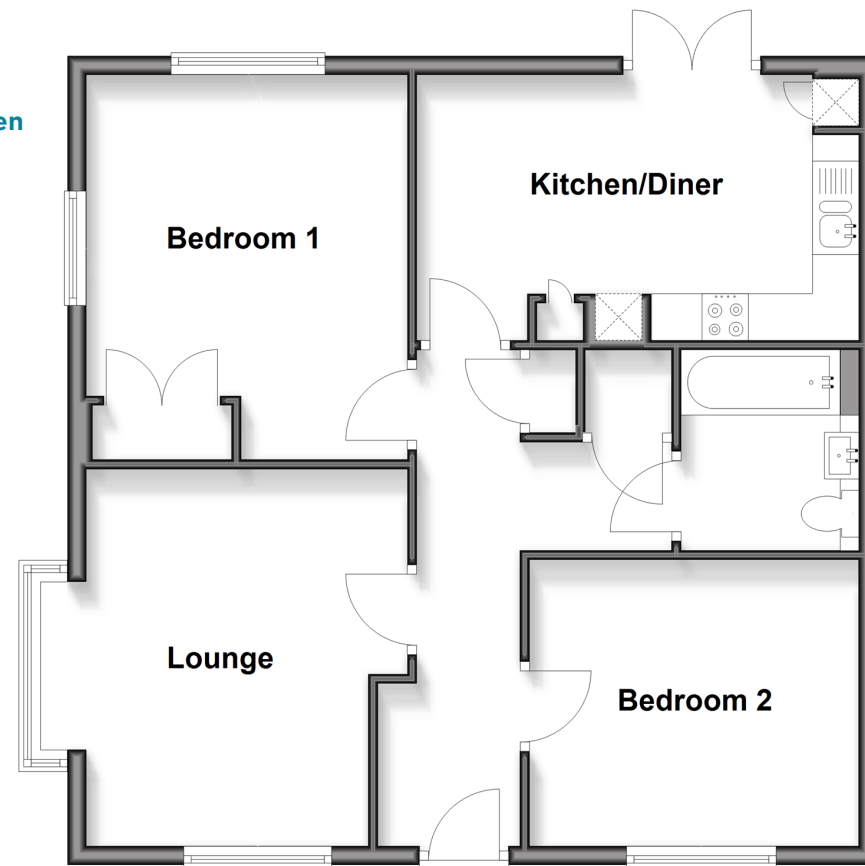
### OUTSIDE

Off Road Parking

Rear Garden

## Ground Floor

Approx. 69.3 sq. metres (745.5 sq. feet)



**Call Paddock Wood - 01892 836877 ■ [wardsokent.co.uk](http://wardsokent.co.uk)**

- Legal advice should be taken to verify fixtures/fittings, planning, alterations and/or lease details
- Appliances & services are untested, dimensions are approximate and floor plans are not to scale
- Through a Homewise Home For Life Plan people aged 60+ can secure this property for up to 50% less, by purchasing a Lifetime Lease.



13627486/20250924/LF/GD