



Price

£270,000

Leasehold

2x  1x  1x 

**Saxon House, Tram
Way, Wouldham,
Rochester, Kent, ME1**

Wards
Helping you move forwards



Main features

- Full market value £270,000 or 40% share £108,000
- Beautifully presented ground floor apartment
- Located in the picturesque village of Wouldham
- Allocated parking
- Perfect first time buy!

Accommodation

GROUND FLOOR

Hallway

Kitchen: 10'6 x 9'3 (3.20m x 2.82m)

Lounge/Diner: 17'4 x 16'3 (5.29m x 4.96m)

Bedroom 1: 11'1 x 10'6 (3.38m x 3.20m)

Bedroom 2: 14'3 x 7'1 (4.35m x 2.16m)

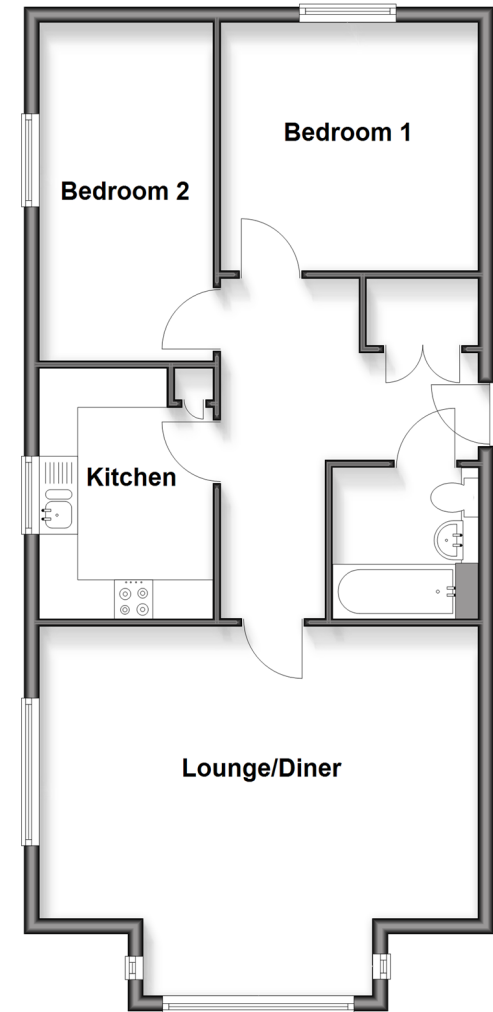
Bathroom: 7'1 x 6'3 (2.16m x 1.91m)

OUTSIDE

Allocated Parking

Ground Floor

Approx. 68.6 sq. metres (738.5 sq. feet)



Call Rochester - 01634 830925 ■ wardsofkent.co.uk

- Legal advice should be taken to verify fixtures/fittings, planning, alterations and/or lease details
- Appliances & services are untested, dimensions are approximate and floor plans are not to scale



11530157/20250913/MM/SN