



Price

£83,250

Leasehold

2x  1x  1x 

**Sandown Close, Deal,
Kent, CT14**

Wards
Helping you move forwards



Main features

- Off road parking to the front
- In good condition throughout and ready to move into
- Shared ownership with either 45% or 100% available to buy
- Ideal for first time buyers
- Close to seafront and within a short distance to Deal high street

Accommodation

GROUND FLOOR

Lounge : 15'8 x 9'11 (4.78m x 3.02m)

Kitchen : 12'8 x 6'1 (3.86m x 1.86m)

FIRST FLOOR

Landing

Bathroom

Bedroom 1: 11'2 x 8'8 (3.41m x 2.64m)

Bedroom 2: 8'0 x 6'7 (2.44m x 2.01m)

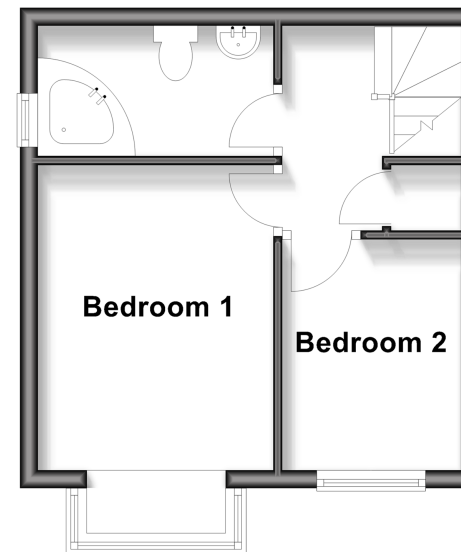
OUTSIDE

Front and Rear Gardens

Driveway

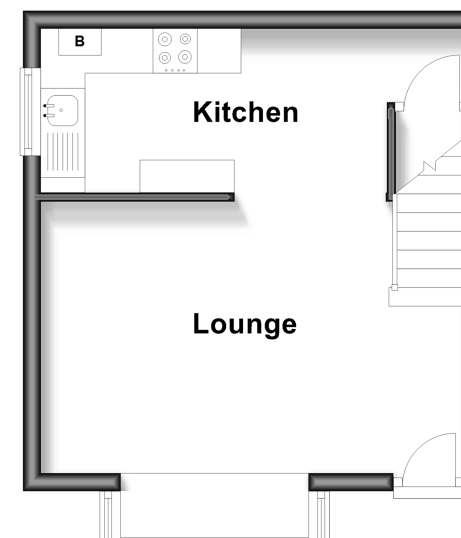
First Floor

Approx. 24.4 sq. metres (262.7 sq. feet)



Ground Floor

Approx. 24.6 sq. metres (265.0 sq. feet)



Call Deal - 01304 361420 ■ wardsokent.co.uk

- Legal advice should be taken to verify fixtures/fittings, planning, alterations and/or lease details
- Appliances & services are untested, dimensions are approximate and floor plans are not to scale



10629364/20250308/BG/WSM