



Price

£120,000

Leasehold

2x  1x  1x 

**Buckley House,
Khartoum Walk,
Chatham, Kent, ME4**

Wards
Helping you move forwards



Main features

- Immaculate throughout
- Modern bathroom and en-suite
- Option to buy 40% share
- Walking distance to Chatham bus station and local amenities
- Situated on a Select Development in the popular area of Brompton



Accommodation

FIRST FLOOR

Hallway

Kitchen/Lounge/Diner: 23'5 x 11'5
(7.14m x 3.48m)

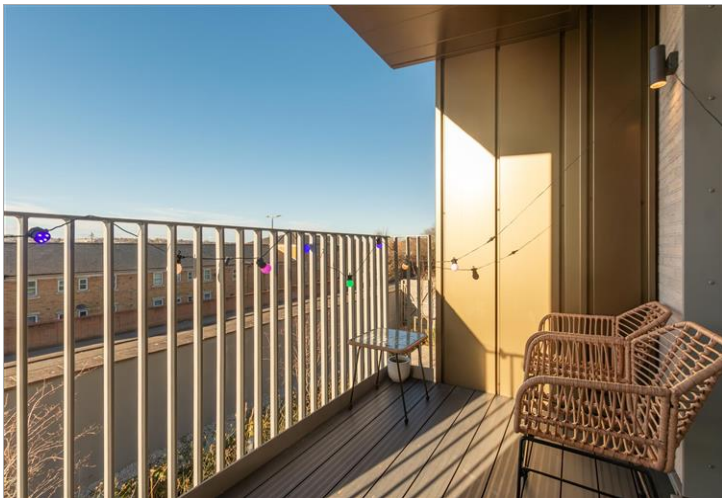
Bedroom 1 en-suite: 12'8 x 10'8
(3.86m x 3.25m)

Bedroom 2: 13'0 x 9'8 (3.97m x 2.95m)

Bathroom

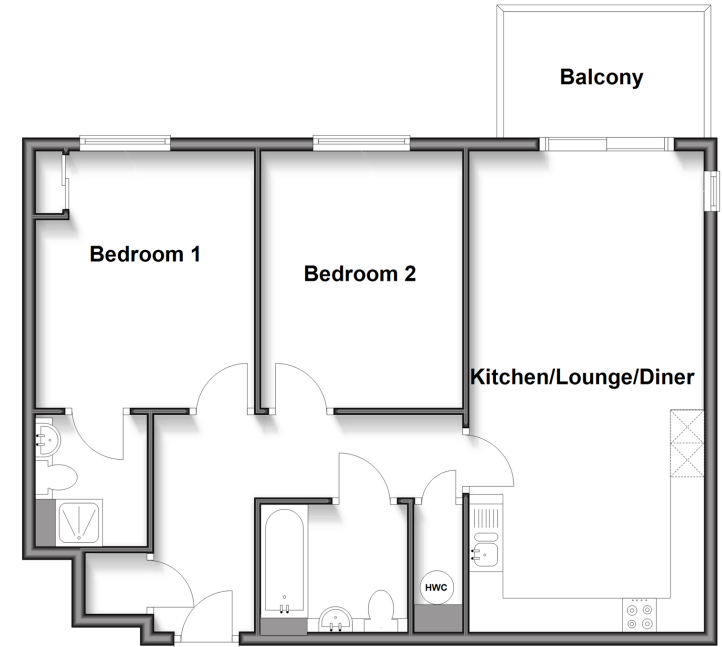
OUTSIDE

Balcony



First Floor

Approx. 69.5 sq. metres (748.5 sq. feet)



Call Gillingham - 01634 851191 ■ wardsofkent.co.uk

- Legal advice should be taken to verify fixtures/fittings, planning, alterations and/or lease details
- Appliances & services are untested, dimensions are approximate and floor plans are not to scale