



Price
£290,000

Leasehold

2x  1x  1x 

**Hawthorn House, The
Avenue, Tunbridge
Wells, Kent, TN2**

Wards
Helping you move forwards



Main features

- Spacious modern first floor apartment
- Offered at 35% share with option to buy more
- Allocated parking space
- Situated in the popular Knights Park development.
- Ideal for first time purchasers

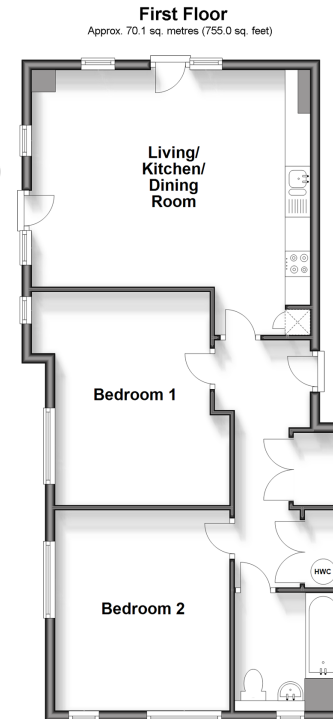
Accommodation

FIRST FLOOR

- Hallway
- Living/Kitchen/Dining Room: 17'8 x 16'6 (5.39m x 5.03m)
- Bedroom 1: 12'5 x 11'7 (3.79m x 3.53m)
- Bedroom 2: 13'3 x 11'9 (4.04m x 3.58m)
- Bathroom

OUTSIDE

- Allocated Parking



Call Tunbridge Wells - 01892 542767 ■ wardsof Kent.co.uk

■ Legal advice should be taken to verify fixtures/fittings, planning, alterations and/or lease details

■ Appliances & services are untested, dimensions are approximate and floor plans are not to scale



14239196/20240124/GA/GA