



Price
£90,000
Leasehold

2x  1x  1x 

Gloriana Road, Langley, Maidstone, Kent,
ME17 3NQ

cubitt & west
Helping you move forwards

Main features

- Available for shared ownership from a 25% share
- Contemporary fitted kitchen and bathroom
- Private rear garden with storage shed
- **RESERVING NOW!**

Accommodation

GROUND FLOOR

Kitchen: 11'0 x 8'8 (3.36m x 2.64m)

living/Dining room : 16'9 x 13'2 (5.11m x 4.02m)

Cloakroom: 6'4 x 3'7 (1.93m x 1.09m)

FIRST FLOOR

Bedroom 1 : 13'5 x 11'4 (4.09m x 3.46m)

Bedroom 2 : 13'5 x 13'0 (4.09m x 3.97m)

Bathroom: 7'1 x 6'4 (2.16m x 1.93m)

OUTSIDE

Allocated parking space

Private rear gardens



Nearest Schools

The area is served by 16 well regarded Primary and Secondary schools, all with Ofsted ratings of 'Good'. Langley Primary Academy and Sutton Valance Preparatory School being the nearest. A further selection of both



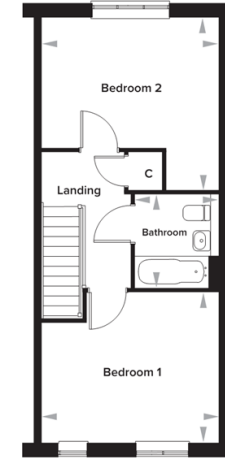
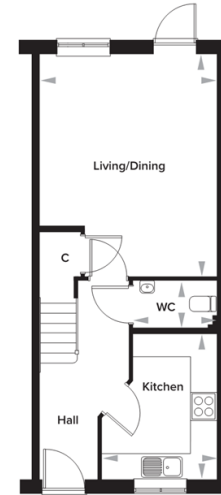
Transport Information

Maidstone has 2 train stations connections to Ashford International, Maidstone East, West Malling, and London Victoria. Ebbsfleet International is only a 25 minute drive away, with services to London St. Pancras International

Rosewood, Maidstone, Kent

The Baker 2 Bedroom Mid-Terrace House

Plots 26, 126, 128 and 134



Ground Floor

Kitchen	2637mm x 3350mm	8' 8" x 11' 0"
Living/Dining	4070mm x 5117mm	13' 2" x 16' 9"
WC	1924mm x 1082mm	6' 4" x 3' 7"

First Floor

Bedroom 1	4080mm x 3462mm	13' 5" x 11' 4"
Bedroom 2	4080mm x 3984mm	13' 5" x 13' 0"
Bathroom	1932mm x 2162mm	6' 4" x 7' 1"

Please note: dimensions are approximate +/- 50mm and are not intended to be used for carpet sizes, appliance spaces or furniture items.

Call Shared Ownership - 01403 602681 ■ cubittandwest.co.uk

- If buying to let, the energy rating will need to be improved to at least 'E' rating before you can let the property
- Legal advice should be taken to verify fixtures/fittings, planning, alterations and/or lease details
- Appliances & services are untested, dimensions are approximate and floor plans are not to scale



24302318/20240115/MIC/MIC