



**Price**  
**£102,500**  
**Leasehold**

3x  1x  1x 

Harlequin Road, Langley, Maidstone, Kent,  
ME17 3YS

**cubitt & west**  
Helping you move forwards

## Main features

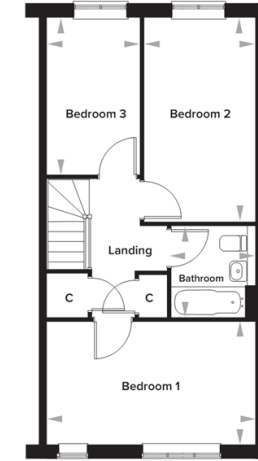
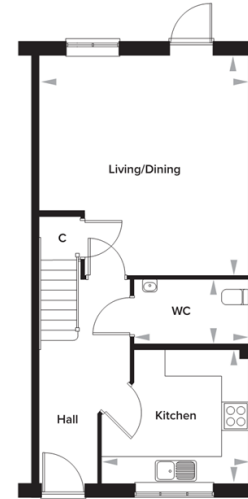
- Available for shared ownership from a 25% share
- Contemporary fitted kitchen and bathroom
- Private rear garden with storage shed
- RESERVING NOW!

## Accommodation

### Rosewood, Maidstone, Kent

#### The Tillman 3 Bedroom Semi-Detached House

Plots 27, 135 and 137



#### Ground Floor

|               |                 |                  |
|---------------|-----------------|------------------|
| Kitchen       | 3345mm x 3028mm | 10' 11" x 9' 11" |
| Living Dining | 4788mm x 5042mm | 15' 8" x 16' 6"  |
| WC            | 2607mm x 1457mm | 8' 7" x 5' 0"    |

#### First Floor

|           |                 |                 |
|-----------|-----------------|-----------------|
| Bedroom 1 | 4788mm x 2818mm | 15' 8" x 9' 3"  |
| Bedroom 2 | 2550mm x 4693mm | 8' 4" x 15' 4"  |
| Bedroom 3 | 2150mm x 3612mm | 7' 0" x 11' 10" |
| Bathroom  | 1928mm x 2094mm | 6' 4" x 6' 10"  |

Please note: dimensions are approximate +/- 50mm and are not intended to be used for carpet sizes, appliance spaces or furniture items.



#### Nearest Schools

The area is served by 16 well regarded Primary and Secondary schools, all with Ofsted ratings of 'Good'. Langley Primary Academy and Sutton Valance Preparatory School being the nearest. A further selection of both



#### Transport Information

Maidstone has 2 train stations connections to Ashford International, Maidstone East, West Malling, and London Victoria. Ebbsfleet International is only a 25 minute drive away, with services to London St. Pancras International

**Call Shared Ownership - 01403 602681 ■ [cubittandwest.co.uk](http://cubittandwest.co.uk)**

- If buying to let, the energy rating will need to be improved to at least 'E' rating before you can let the property
- Legal advice should be taken to verify fixtures/fittings, planning, alterations and/or lease details
- Appliances & services are untested, dimensions are approximate and floor plans are not to scale



24302325/20240115/MIC/MIC