

Hatfield Road  
St. Albans  
AL1 4JE

 2 Bedrooms

 1 Bathroom

 1 Reception Room

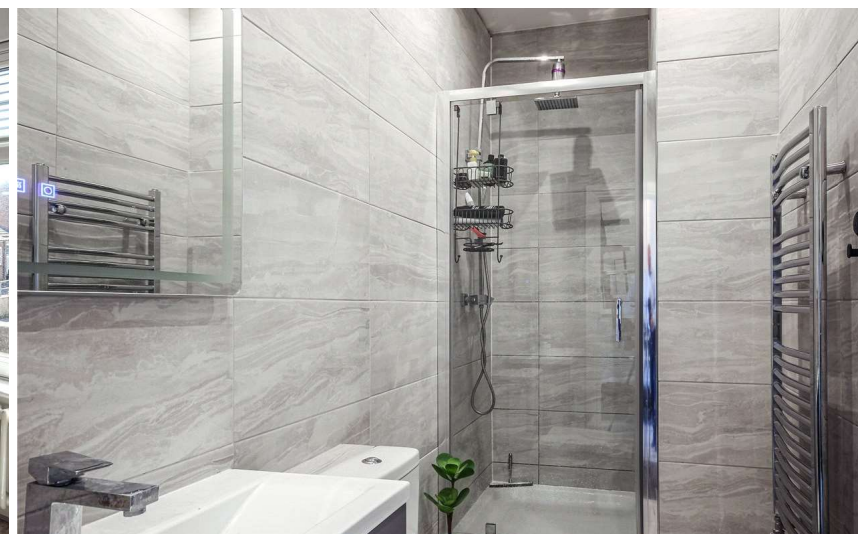
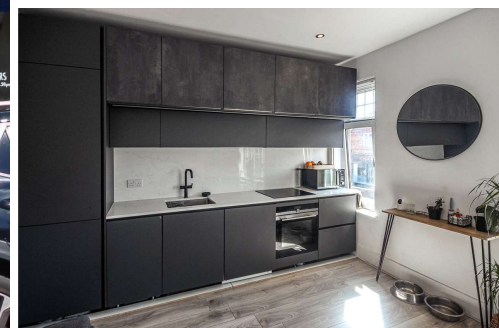
 EPC Band E

Council Tax  
Band: B £1,676.19 (2025/2026)  
Local Authority  
St Albans City & District Council

Deposit £1,755.54  
Holding Deposit £346.15

£1,500 pcm

 **ashtons**  
for life's great moves



This beautifully presented and extremely bright first floor one/two bedroom apartment is ideally located within a short walk of the mainline station and the city centre.

### Description

This bright and airy apartment has a private, front on-street level, with an entrance hall and staircase that leads to the first floor accommodation. Once up the stairs, all rooms lead from the hallway.

The lovely, bright living room is open-plan to the high quality and fully fitted kitchen, which features integrated appliances, wood flooring and double glazed windows.

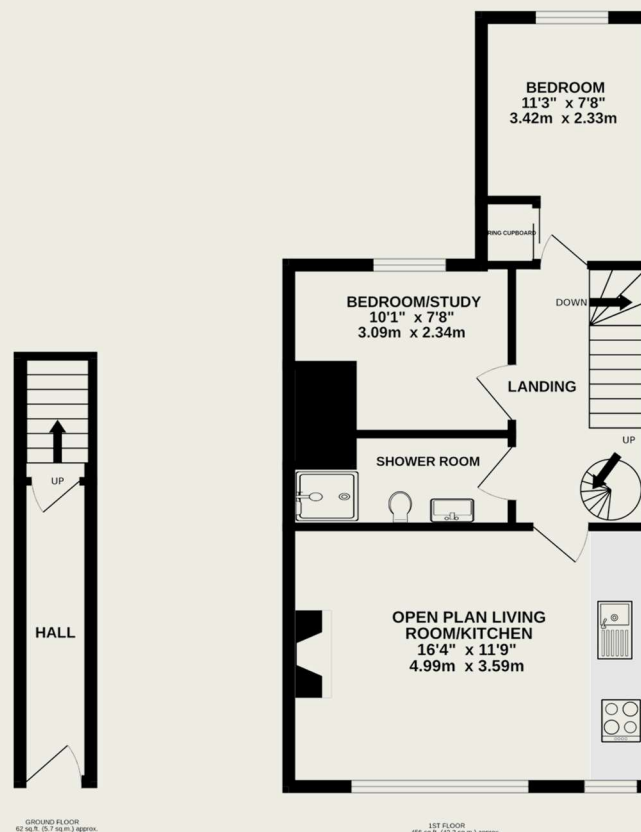
There are two bedrooms, one of which can also be used as a study, and an impressive fully tiled shower room.

There is also a useful second floor storage area accessed via a spiral staircase.

With an abundance of shops, restaurants and cafes close by, as well as being on the doorstep of Clarence Park and just a short stroll to the mainline station, this apartment is perfect for the busy commuter.

### Location

The property is perfectly located at the top end of Hatfield Road, with local shops, cafes and restaurants on the doorstep, as is Clarence Park and the mainline station. The town centre is also within a short walk..



This floor plan is for illustrative purposes only. The measurement and position of each element is approximate and must be viewed as such

These particulars do not constitute an offer or contract in whole or part. The statements contained herein are made without responsibility on the part of Ashtons or the vendors and they cannot be relied upon as representatives of fact. In respect of floor plans, these are for illustrative purposes only. The measurement and position of each element is approximate and must be viewed as such. Intending purchasers should therefore satisfy themselves by inspection or otherwise as to their correctness. The vendors do not make or give, and neither Ashtons nor any person in their employment has any authority to make or give, any representation or warranty whatsoever in relation to this property.

