



Lime Tree Place  
St. Albans  
AL1 3BD

 2 Bedrooms

 1 Bathroom

 1 Reception Room

 Allocated Parking

 Communal

 EPC Band C

Council Tax  
Band: D £2,257.13 (2025/2026)  
Local Authority  
St Albans City & District Council  
Holding Deposit: £346.15  
Deposit: £1,730.75

£1,500 pcm

 **ashtons**  
for life's great moves





A light and bright top floor two bedroom apartment with one allocated parking space, located only a short walk from St Albans City station and the City centre.

### Description

Set back from the road within communal grounds, the apartment has recently fitted flooring, new window coverings, neutral decoration throughout and is superbly located close to the mainline station and City centre.

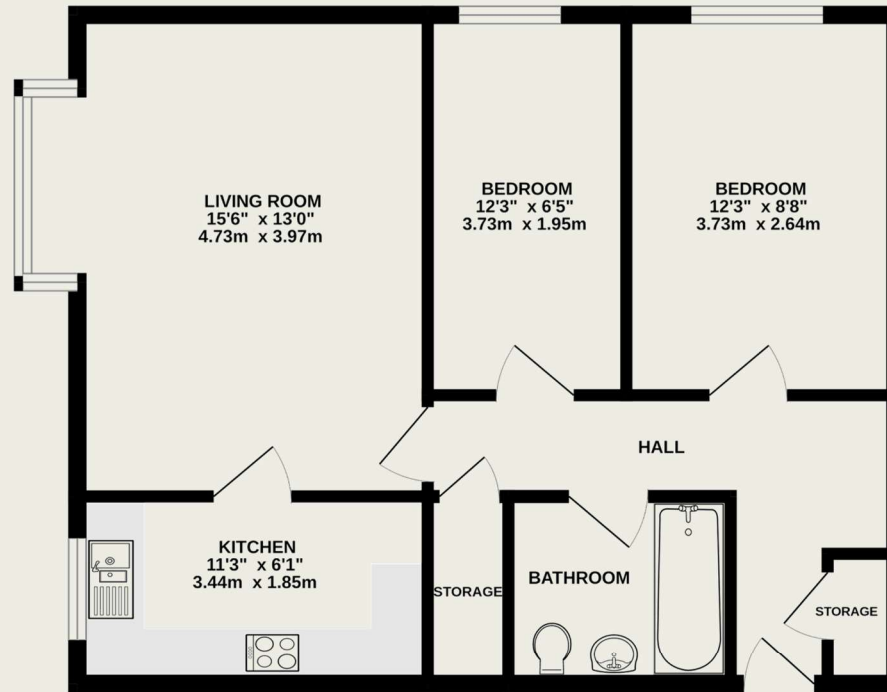
The entrance hall has two useful storage cupboards and leads into a spacious and airy living/dining room which is flooded in natural light from a large box bay window. A door leads to the light and bright kitchen, which is fitted with wall and base units housing an integrated oven and hob and dishwasher, free standing fridge/freezer and washing machine.

The two bedrooms are serviced by a modern bathroom suite with power shower over the bath.

There is also the benefit of an allocated car parking space and additional bays are available for visitors.

### Location

The apartment is ideally located, circa 0.25 of a mile from St Albans mainline railway station, where direct trains offer access to Kings Cross St Pancras and the Eurostar terminal in London in under 20 minutes, as well as to Luton airport, Gatwick airport and Brighton. The vibrant City centre is within circa 0.5 of a mile.



TOTAL FLOOR AREA : 579 sq.ft. (53.8 sq.m.) approx.

This floor plan is for illustrative purposes only. The measurement and position of each element is approximate and must be viewed as such

These particulars do not constitute an offer or contract in whole or part. The statements contained herein are made without responsibility on the part of Ashtons or the vendors and they cannot be relied upon as representatives of fact. In respect of floor plans, these are for illustrative purposes only. The measurement and position of each element is approximate and must be viewed as such. Intending purchasers should therefore satisfy themselves by inspection or otherwise as to their correctness. The vendors do not make or give, and neither Ashtons nor any person in their employment has any authority to make or give, any representation or warranty whatsoever in relation to this property.