


**Nero House,
Charrington Place, St.
Albans, AL1 3GW**

 **1 Bedroom**

 **1 Bath/Shower Room**

 **1 Reception Room**

 **Residence & Visitor**

 **Communal Grounds**

 **EPC Band B**

Council Tax
Band: C £2,006.35 25/26

Deposit £1,557.65
Holding Deposit £311.53

£1,350 PCM

 **ashtons**
for life's great moves



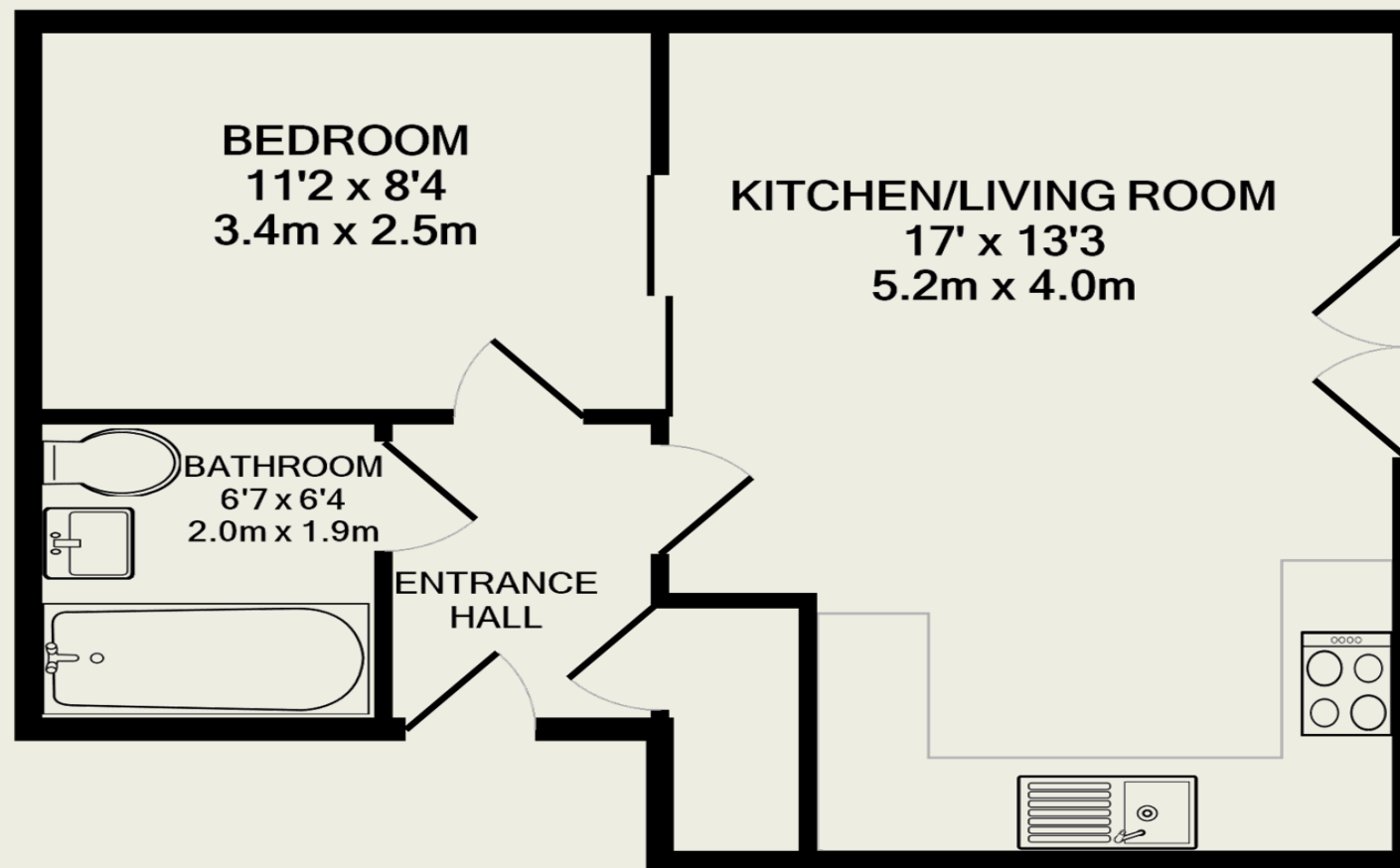
A one-bedroom apartment presented in immaculate order throughout boasting a Juliet balcony overlooking communal gardens, located close to St Albans City station and the vibrant City centre.

Description

This stunning second floor apartment offers a Juliet balcony with views out to the communal gardens. Entered through a secure communal door with entry system and lift to the second floor, the well-maintained halls lead to the entrance of the property. The inner hallway has a storage cupboard containing the top-loading washing machine and boiler, leads on to the reception room, bedroom and bathroom. A spacious living room is flooded with natural light through the Juliet balcony doors. The kitchen which is open-plan to the living room offers modern fitted appliances including fridge/freezer, oven, hob and a range of wall and base cupboards. The bedroom is entered through a sliding smoked glass door from the reception room and also from a separate door from the entrance hall. The smart contemporary bathroom has a bathtub with shower over. Outside there are visitor parking bays, the Victoria Street station car park, communal gardens and a children's playground area.

Location

The apartment is ideally located within just five minutes' walk to St Albans mainline railway station, with direct trains to Kings Cross St Pancras and Eurostar terminal in London which can be reached in under 20 minutes, as well as direct trains to Luton airport, Gatwick airport and Brighton. The vibrant City centre and local parks are less than 10 minutes' walk and St Albans Abbey Railway Station with connections to Watford Junction and London Euston is just 15 minutes' walk away.



TOTAL APPROX. FLOOR AREA 401 SQ.FT. (37.3 SQ.M.)

This floor plan is for illustrative purposes only. The measurement and position of each element is approximate and must be viewed as such

These particulars do not constitute an offer or contract in whole or part. The statements contained herein are made without responsibility on the part of Ashtons or the vendors and they cannot be relied upon as representatives of fact. In respect of floor plans, these are for illustrative purposes only. The measurement and position of each element is approximate and must be viewed as such. Intending purchasers should therefore satisfy themselves by inspection or otherwise as to their correctness. The vendors do not make or give, and neither Ashtons nor any person in their employment has any authority to make or give, any representation or warranty whatsoever in relation to this property.