

Chevening Road,
Queen's Park NW6



Chevening Road, Queen's Park **NW6**

Exceptional, double-fronted, semi-detached Edwardian home with uninterrupted views over Queen's Park itself, offering a rare opportunity to acquire one of the most sought-after residences in this very desirable area of London. Thoughtfully extended and beautifully designed, this six bedroom home spans almost 4,200 sq ft, blending timeless period features with modern comforts, and boasts an exquisite 105 ft garden.

From the moment you step inside, a sense of grandeur prevails, with original ornate ceiling details, elegant, vintage stained glass shutters, and beautifully preserved wooden floors.



Guide price: £5,250,000

Tenure: Freehold

Local authority: London Borough of Brent

Council tax band: G



The entrance hall, with its striking tiling, leads to a formal front reception room, complete with a one of a kind, handmade fireplace. A practical yet stylish boot room sits at the front of the house, offering a perfect space for coats, shoes, and buggies.

To the rear, the open plan kitchen, dining, and reception area has been cleverly designed for modern family living. The snug/TV room, warmed by a wood burner, provides a cosy, private retreat. While the striking rear extension gives the space a sense of airiness and flows seamlessly to the outdoors. With blue skies and lush greenery visible from both the front and rear, this home enjoys a unique, tranquil setting hard to find in central London.

The first floor is home to a luxurious principal suite, featuring breathtaking views over the park, a generous walk in wardrobe, and an indulgent en-suite bathroom with a steam shower. Period fireplaces are preserved in both the bedroom and en suite, further enhancing the home's character. Three further bedrooms overlook the rear garden - two large doubles with original fireplaces and floorboards, and a cleverly designed third bedroom featuring built-in wardrobes, a bespoke desk, and a spacious mezzanine level.

The top floor unfolds to reveal a wonderfully large, loft style bedroom with an en suite bathroom, offering a peaceful retreat with ample storage and a bright, airy feel.

The lower ground floor has been fully converted, providing an expansive and versatile space. A sophisticated cinema room, complete with panelled walls, sets the tone for relaxed evenings, while a separate utility room ensures practicality. A generous bedroom with an en-suite shower room offers additional accommodation, with its own private access via a staircase from the garden-ideal for use as a self-contained flat or guest suite.





The spectacular 105 ft. garden is a true sanctuary, featuring a decked terrace leading onto a well kept lawn, and a secluded seating area at the rear, complete with a hot tub and storage shed. Having been cherished by the same owners for over 22 years, this remarkable home has evolved gracefully, adapting to the needs of a growing family while maintaining its elegant charm.

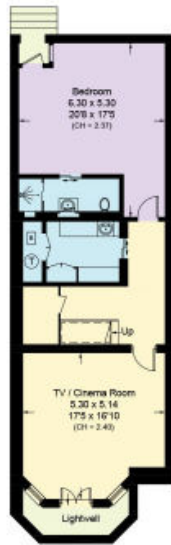




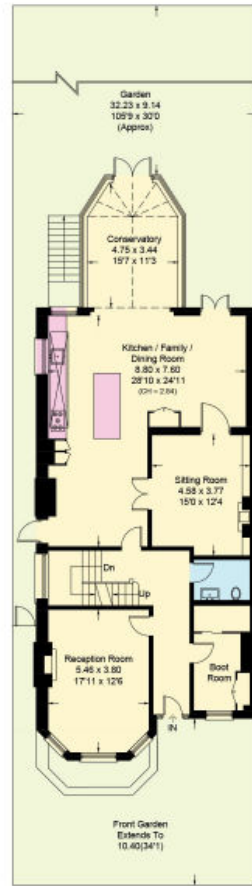


Chevening Road, NW6

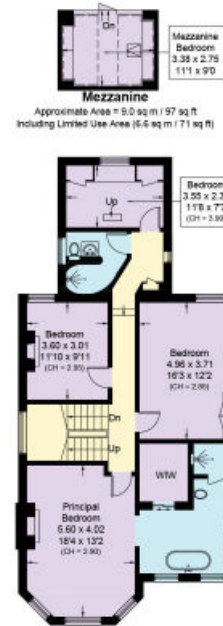
Approximate Area = 388.8 sq m / 4185 sq ft
Including Limited Use Area (29.1 sq m / 313 sq ft) And Eaves



Lower Ground Floor
Approximate Area = 82.7 sq m / 890 sq ft
Including Limited Use Area (1.5 sq m / 16 sq ft)



Ground Floor
Approximate Area = 140.4 sq m / 1511 sq ft
Including Limited Use Area (2.4 sq m / 26 sq ft)



First Floor
Approximate Area = 102.2 sq m / 1100 sq ft



Second Floor
Approximate Area = 54.5 sq m / 587 sq ft
Including Limited Use Area (1.5 sq m / 16 sq ft) (shown)

This plan is for guidance only and must not be relied upon as a statement of fact. Attention is drawn to the important notice on the last page of the text of the Particulars.

Knight Frank

Queen's Park
60c Salusbury Road
NW6 6NP
[knightfrank.co.uk](https://www.knightfrank.co.uk)

We would be delighted to tell you more

Queen's Park
020 3815 3020
queenspark@knightfrank.com



Fixtures and fittings: A list of the fitted carpets, curtains, light fittings and other items fixed to the property which are included in the sale (or may be available by separate negotiation) will be provided by the Seller's Solicitors.

Important Notice: 1. Particulars: These particulars are not an offer or contract, nor part of one. You should not rely on statements by Knight Frank LLP in the particulars or by word of mouth or in writing ("information") as being factually accurate about the property, its condition or its value. Neither Knight Frank LLP nor any joint agent has any authority to make any representations about the property, and accordingly any information given is entirely without responsibility on the part of the agents, seller(s) or lessor(s). 2. Photos, Videos etc: The photographs, property videos and virtual viewings etc. show only certain parts of the property as they appeared at the time they were taken. Areas, measurements and distances given are approximate only. 3. Regulations etc: Any reference to alterations to, or use of, any part of the property does not mean that any necessary planning, building regulations or other consent has been obtained. A buyer or lessee must find out by inspection or in other ways that these matters have been properly dealt with and that all information is correct. 4. VAT: The VAT position relating to the property may change without notice. 5. To find out how we process Personal Data, please refer to our Group Privacy Statement and other notices at <https://www.knightfrank.com/legals/privacy-statement>. Particulars dated February 2024. Photographs and videos dated February 2024.

Knight Frank is the trading name of Knight Frank LLP. Knight Frank LLP is a limited liability partnership registered in England and Wales with registered number OC305934. Our registered office is at 55 Baker Street, London W1U 8AN where you may look at a list of members' names. If we use the term 'partner' when referring to one of our representatives, that person will either be a member, employee, worker or consultant of Knight Frank LLP and not a partner in a partnership. If you do not want us to contact you further about our services then please contact us by either calling 020 3544 0692, email to marketing.help@knightfrank.com or post to our UK Residential Marketing Manager at our registered office (above) providing your name and address.