

Guilford House, Tollgate Gardens NW6



Guilford House, Tollgate Gardens **NW6**

Providing almost 1,000 sq ft, this beautifully presented three bedroom, two bathroom apartment offers a contemporary lifestyle in a sought-after location.

Nestled within a modern development, NOMA Apartments features an array of amenities, including a dedicated concierge service, a fully equipped gym, secure underground parking, and a tranquil communal courtyard garden.

The apartment provides a bright and spacious open plan kitchen and reception room which extends on to a private balcony, perfect for both entertaining and relaxing.



Guide price: £850,000

Tenure: Leasehold: approximately 242 years remaining

Service charge: £3,900 per annum. Please note we have been unable to confirm the service charge and ground rent review periods. You should ensure you make your own enquiries

Ground rent: £350 per annum

Local authority: London Borough of Brent

Council tax band: G





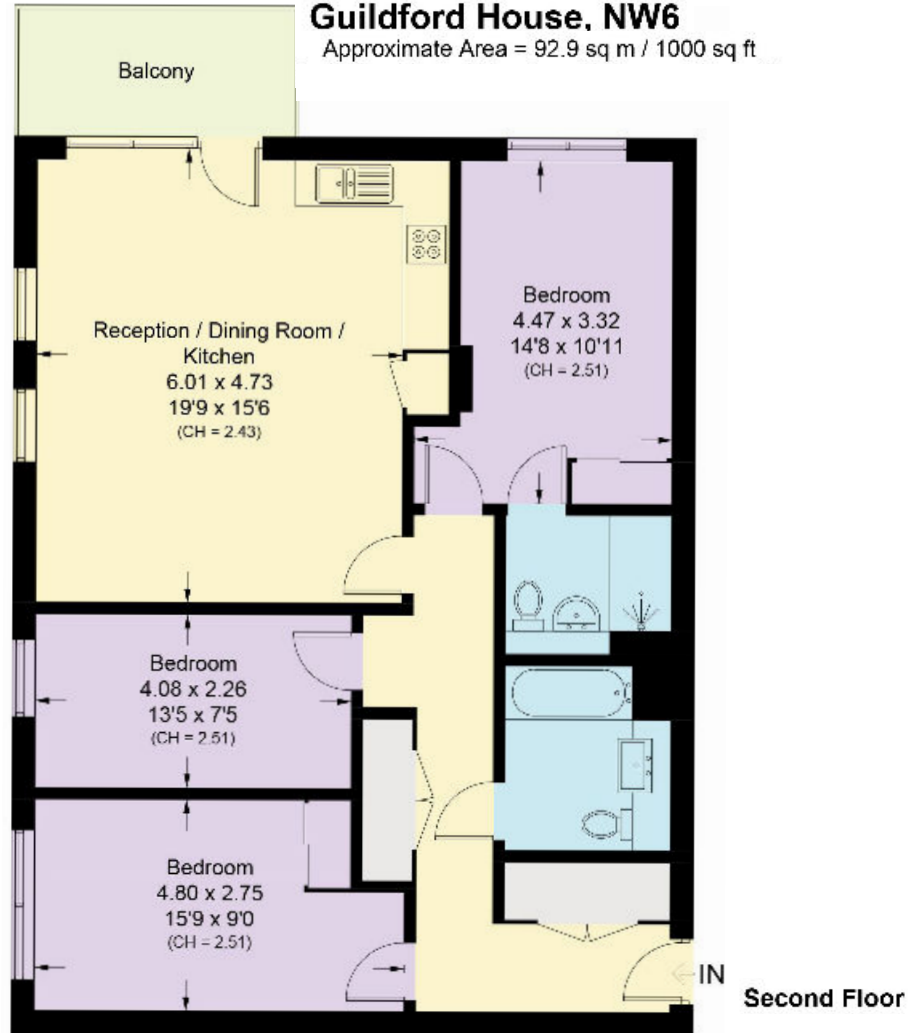
The generously sized principal bedroom features built in storage and an en suite shower room for added convenience. Two additional bedrooms provide ample space for family or guests, complemented by a well appointed separate bathroom. Storage is plentiful throughout the flat, ensuring a clutter-free living environment.

Situated in Travel Zone 2, NOMA Apartments enjoys excellent transport links, with Kilburn Park Underground station (Bakerloo Line) just a short stroll away. Kilburn High Road station also offers access to the Overground train line, enhancing connectivity to the wider city. Local amenities on Kilburn High Road are within easy reach, while the vibrant neighborhoods of Queens Park and Maida Vale add further appeal to the area.



Guildford House, NW6

Approximate Area = 92.9 sq m / 1000 sq ft



This plan is for guidance only and must not be relied upon as a statement of fact. Attention is drawn to the important notice on the last page of the text of the Particulars.

Knight Frank

Queen's Park
60c Salusbury Road
NW6 6NP
[knightfrank.co.uk](https://www.knightfrank.co.uk)

We would be delighted to tell you more

Queen's Park
020 3815 3020
queenspark@knightfrank.com



Fixtures and fittings: A list of the fitted carpets, curtains, light fittings and other items fixed to the property which are included in the sale (or may be available by separate negotiation) will be provided by the Seller's Solicitors.

Important Notice: 1. Particulars: These particulars are not an offer or contract, nor part of one. You should not rely on statements by Knight Frank LLP in the particulars or by word of mouth or in writing ("information") as being factually accurate about the property, its condition or its value. Neither Knight Frank LLP nor any joint agent has any authority to make any representations about the property, and accordingly any information given is entirely without responsibility on the part of the agents, seller(s) or lessor(s). 2. Photos, Videos etc: The photographs, property videos and virtual viewings etc. show only certain parts of the property as they appeared at the time they were taken. Areas, measurements and distances given are approximate only. 3. Regulations etc: Any reference to alterations to, or use of, any part of the property does not mean that any necessary planning, building regulations or other consent has been obtained. A buyer or lessee must find out by inspection or in other ways that these matters have been properly dealt with and that all information is correct. 4. VAT: The VAT position relating to the property may change without notice. 5. To find out how we process Personal Data, please refer to our Group Privacy Statement and other notices at <https://www.knightfrank.com/legals/privacy-statement>. Particulars dated April 2024. Photographs and videos dated April 2024.

Knight Frank is the trading name of Knight Frank LLP. Knight Frank LLP is a limited liability partnership registered in England and Wales with registered number OC305934. Our registered office is at 55 Baker Street, London W1U 8AN where you may look at a list of members' names. If we use the term 'partner' when referring to one of our representatives, that person will either be a member, employee, worker or consultant of Knight Frank LLP and not a partner in a partnership. If you do not want us to contact you further about our services then please contact us by either calling 020 3544 0692, email to marketing.help@knightfrank.com or post to our UK Residential Marketing Manager at our registered office (above) providing your name and address.