



**Apartment 24, Barwick House Duck Street, Rushden  
Northamptonshire NN10 9GP  
£110,000 Leasehold**

We are delighted to offer for sale, with no onward chain, this well presented, second floor apartment situated in a sought after complex for the over 55's only. Within the complex you will find several communal areas, comprising a residents lounge, kitchen and laundry room. Externally, there are communal gardens, communal car parking, bin storage and a clothes drying area. Contact our office today to arrange that all important early viewing.

- No Onward Chain
- Electric Heating and PVC Double Glazing
  - Lift Access
- Large Loft Space For Storage
- Communal Car Park
- Central Location To All Amenities
- Rarely Available Second Floor Apartment
  - Two Bedrooms
  - Communal Garden Area
- Energy Efficiency Rating - D64



### Location

Situated on Duck Street, in between Wellingborough Road and Fitzwilliam Street, as identified by our for sale board. Viewings should be made strictly via ourselves the Sole Selling Agents on 01933 316316.

### Council Tax Band

B

### Energy Rating

Energy Efficiency Rating - D64  
Certificate number - 2230-4978-7040-2001-8021

### Leasehold Information

This property is Leasehold.

We are advised by our Vendor client the property was offered on a 125 year Lease from June 2017 and therefore there are approximately 122 years remaining on the Lease.

### Ground Rent

We are advised that there is NO ground rent payable.

### Service & Maintenance Charges

We are advised that the service charges are £172.50 per month, which also covers buildings insurance.

The cost of the Service Charges are due to be reviewed again in - TBC

All of this information regarding the lease, ground rent, service & maintenance charges will naturally need to be clarified by any potential Purchaser's Solicitors / Conveyancers before committing to legal exchange of contracts.

### Accommodation

#### Ground Floor

#### Communal Entrance

#### Communal Areas

The communal areas of the development include the car park, front and rear garden areas with sitting out areas and a drying area. Internally, there is a laundry room, residents lounge with adjoining residents kitchen. There is also the Managers Office.

#### Second Floor

##### Hall

Cloaks cupboard.

### Living Room 12'0" x 11'10" (3.66m x 3.60m)

### Kitchen 12'0" x 6'11" (3.66m x 2.11m)

Fitted electric oven. Electric hob. Fridge. Freezer. Space and plumbing for washing machine.

### Bedroom 1 8'8" x 14'0" (2.65m x 4.26m)

### Bedroom 2 6'10" x 8'2" (2.08m x 2.49m)

(Currently used as a utility room/store).

### Shower Room / WC

Plus airing cupboard housing modern hot water heater.

### Agents Note

If you make arrangements to view and/or offer on this property, Mike Neville Estate Agents will request certain personal and contact information from you in order to provide our most efficient and professional service to both you and our vendor client.

To view our Privacy Policy, please visit [www.mike-neville.co.uk/privacy](http://www.mike-neville.co.uk/privacy)

### Money Laundering Regulations 2017

We are required to obtain proof of identity and proof of address, as well as evidence of funds and source of deposit, on or before the date that a proposed purchaser's offer is accepted by the vendor (seller).

### Floorplans

Floor plans are for identification purposes only and not to scale. All measurements are approximate. Wall thickness, door and window sizes are approximate. Prospective purchasers are strongly advised to check all measurements prior to purchase.

### Disclaimer

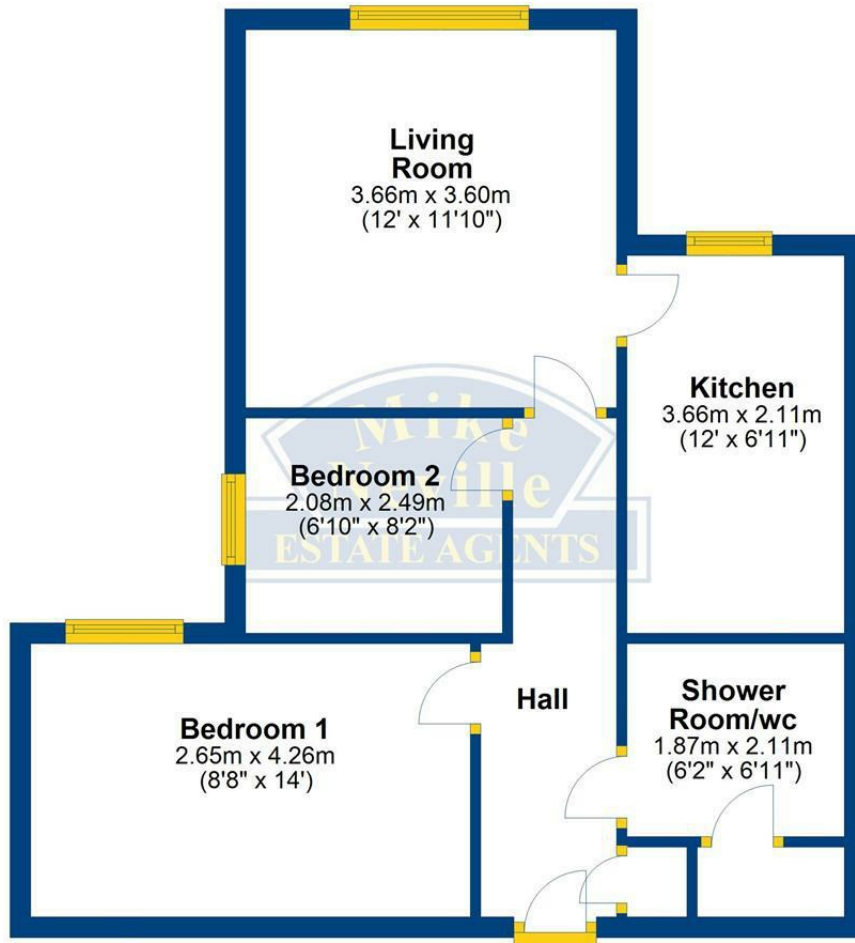
Mike Neville Estate Agents for themselves and the Vendors/Lessors of this property, give notice that (a) these particulars are produced in good faith as a general guide only and do not constitute or form part of a contract (b) no person in the employment of Mike Neville has authority to give or make any representation or warranty whatsoever in relation to the property. Any appliances mentioned have not been tested by ourselves.





## Second Floor

Approx. 50.6 sq. metres (544.7 sq. feet)



Total area: approx. 50.6 sq. metres (544.7 sq. feet)