





Adam Hayes - East Finchley Office - Sales 158 High Road, East Finchley, London, N2 9AS

Tel: 0208 883 2621 Email: info@adam-hayes.co.uk Web: www.adam-hayes.co.uk

Brookland Rise, Hampstead Garden Suburb, NW11

£600,000

3 Bedrooms 2 Bathrooms 1 Receptions

Key Features

- Three Bedrooms
- Two Bathrooms
- Recently Renovated
- New Lease
- Garage
- Catchment For Brookland Junior and Henrietta Barnett

Other Information

Tenure: Leasehold
Length of Lease: 168 Years
Ground Rent: Nil
Service Charge: £2,000.00 P/A
Council Tax Band: D

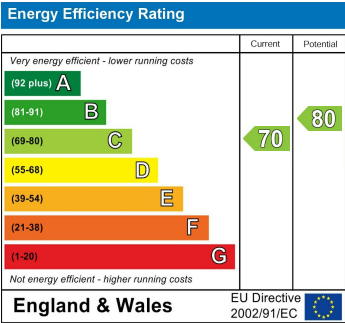


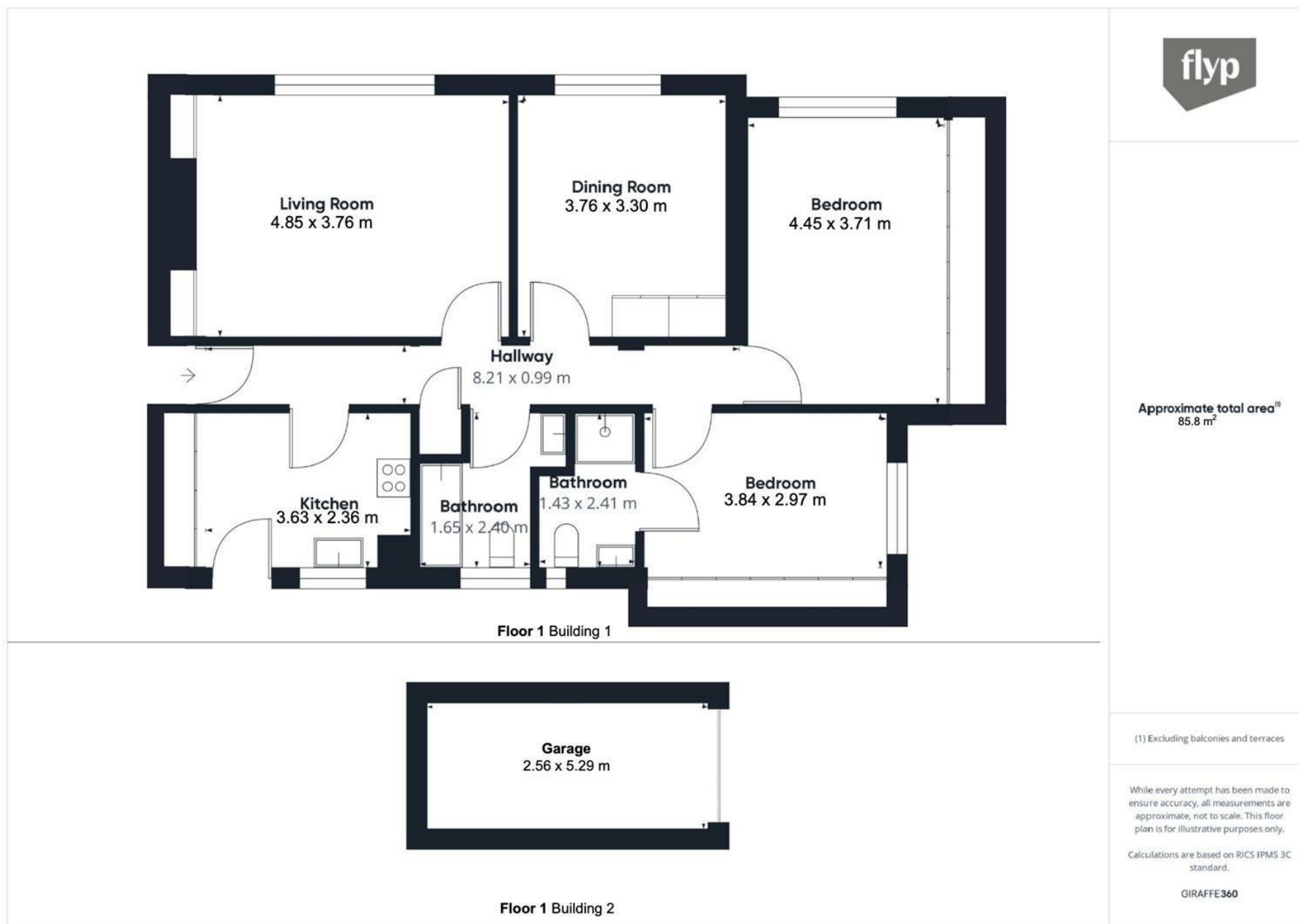
Nearest Stations

Finchley Central Station	0.9 miles
Golders Green Station	1.1 miles
East Finchley Station	1.2 miles

Property Description

Located in this highly sought-after tree lined road, just off Falloden Way, is a stunning three-bedroom, two-bathroom ground floor apartment, with easy access to both East Finchley and Golders Green Underground Stations (Northern Line). The property benefits from three well sized bedrooms, two modern bathrooms (one en-suite) a reception room with a TV wall unit, ceiling speakers in four rooms, a separate modern kitchen with Quartz countertops and high-end Siemens appliances. Further benefits of the apartment include a brand-new lease security alarm and a garage with a newly installed roof, offering valuable extra storage and being within the catchment area for Brookland Junior School and near Henrietta Barnett Secondary School, making it an excellent choice for families. To really appreciate the size, location and condition of this fantastic apartment, a internal viewing is highly recommended through he vendors main agents, Adam Hayes Estate Agents.





These particulars, whilst believed to be accurate, are set out as a general outline only for guidance and do not constitute any part of an offer or contract. Intending purchasers or prospective tenants should not rely on them as statements or representation of fact, but must satisfy themselves by inspection or otherwise as to their accuracy. We have not carried out a detailed survey, not tested the services, appliances and specific fittings. Room sizes should not be relied upon for carpets and furnishings. The measurements given are approximate. No person in this firm's employment has the authority to make or give any representation or warranty in respect of the property.