








Adam Hayes - East Finchley Office - Lettings 158 High Road, East Finchley, London, N2 9AS

Tel: 0208 883 2621 Email: [info@adam-hayes.co.uk](mailto:info@adam-hayes.co.uk) Web: [www.adam-hayes.co.uk](http://www.adam-hayes.co.uk)

Leeside Crescent, London, NW11 0DA

£3,662 PCM

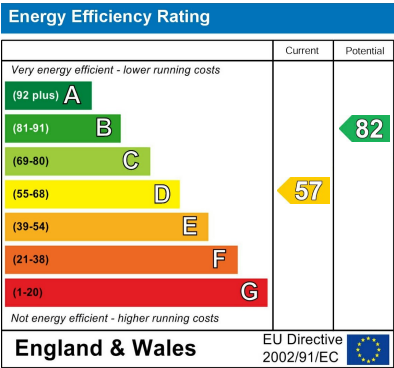
 3 Bedrooms  2 Bathrooms  2 Receptions

Key Features

- Three Bedrooms
- Semi-Detached House
- Two Receptions
- Private Garden
- Modern Kitchen
- Guest WC

Other Information

Council Tax Band: F  
Length of Tenancy: Long Let  
Deposit: £4,225

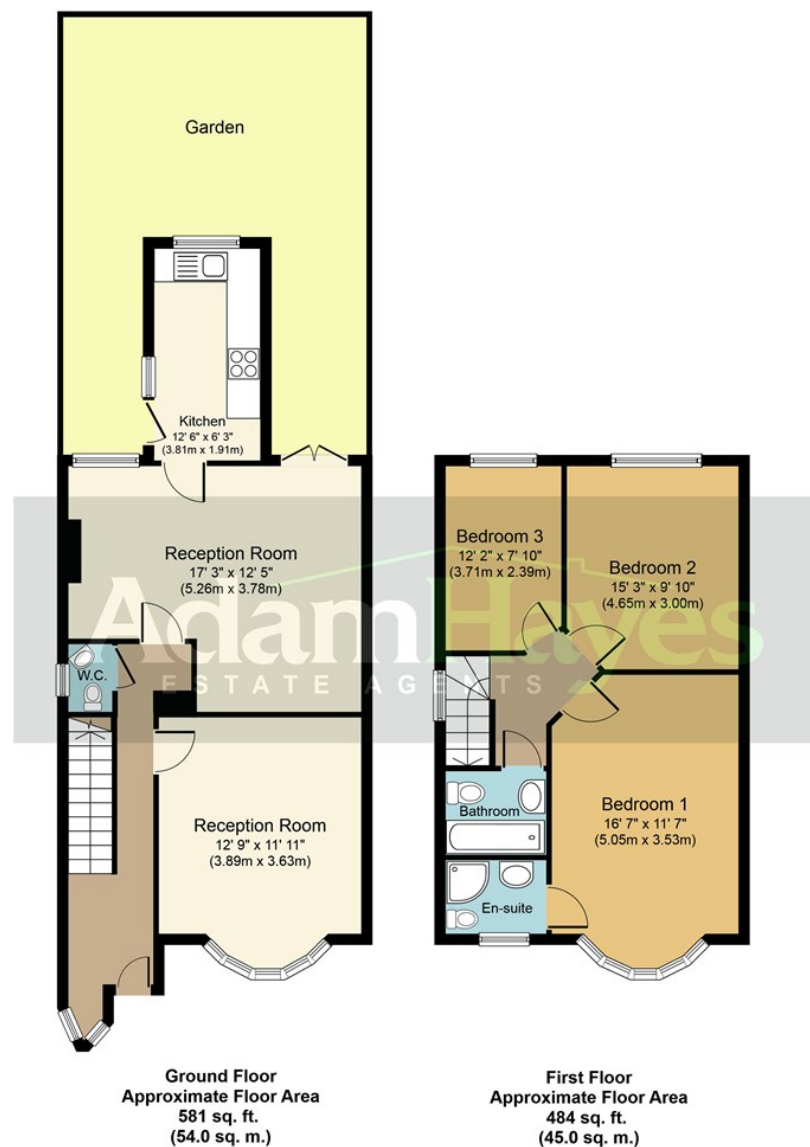


Nearest Stations

- Brent Cross Station
- Golders Green Station

Property Description

A well-presented three-bedroom semi-detached home offering over 1,700 sq ft of thoughtfully arranged living space, ideally suited to modern family life. Conveniently located within easy reach of Finchley Road and an excellent selection of local amenities, this property combines comfort, style, and practicality. The ground floor boasts a modern fitted kitchen, complete with a double sink and quality fittings, leading out to a generously sized private rear garden, ideal for both everyday living and entertaining. Two good-sized receptions and a guest WC further enhance the home’s appeal. Upstairs, the principal bedroom benefits from bay windows and a sleek en-suite shower room. Two additional double bedrooms and a modern family bathroom complete the first floor. Additional features include double-glazed windows and ample storage. Local shops, cafés, parks, and excellent transport links are also within close proximity. Early viewings are highly recommended.



Whilst every attempt has been made to ensure the accuracy of the floor plan contained here, measurements of doors, windows, rooms and any other items are approximate and no responsibility is taken for any error, omission, or mis-statement. This plan is for illustrative purposes only and should be used as such by any prospective purchaser or tenant. The services, systems and appliances shown have not been tested and no guarantee as to their operability or efficiency can be given.

Copyright V360 Ltd 2017 | [www.houseviz.com](http://www.houseviz.com)

These particulars, whilst believed to be accurate, are set out as a general outline only for guidance and do not constitute any part of an offer or contract. Intending purchasers or prospective tenants should not rely on them as statements or representation of fact, but must satisfy themselves by inspection or otherwise as to their accuracy. We have not carried out a detailed survey, not tested the services, appliances and specific fittings. Room sizes should not be relied upon for carpets and furnishings. The measurements given are approximate. No person in this firm's employment has the authority to make or give any representation or warranty in respect of the property.