



Park Gate, London, N2 8DJ

£375,000



 2  1  1



Adam Hayes - East Finchley Office - Sales 158 High Road, East Finchley, London, N2 9AS
Tel: 0208 883 2621 Email: info@adam-hayes.co.uk Web: www.adam-hayes.co.uk

Park Gate, London, N2 8DJ

£375,000

 2 Bedrooms  1 Bathrooms  1 Receptions

Key Features

- Two Bedrooms
- Ground Floor Apartment
- Private Garden
- Chain Free
- Separate Kitchen
- Quiet Cul-de-sac Location

Nearest Stations

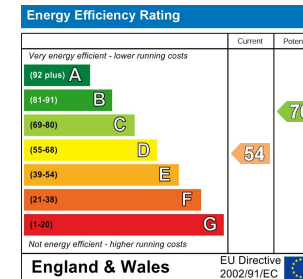
- East Finchley (0.5miles)
- Finchley Central (1.6miles)

Property Description

Situated in this popular residential Road off East Finchley High Road and within walking distance to local shops, amenities and East Finchley Tube station is this share of freehold two double bedroom, one bathroom, apartment with private garden. The property is offered chain free and benefits from a large reception leading to the garden, separate kitchen and off street parking via garage as well as on street via residents permit. To really appreciate the size, location and potential an internal viewing is highly recommended via vendors main agents Adam Hayes Estate Agents.

Other Information

Tenure: Leasehold - Share of Freehold
Length of Lease: n/a
Ground Rent: n/a
Service Charge: n/a
Service Review Period: n/a
Council Tax Band: D

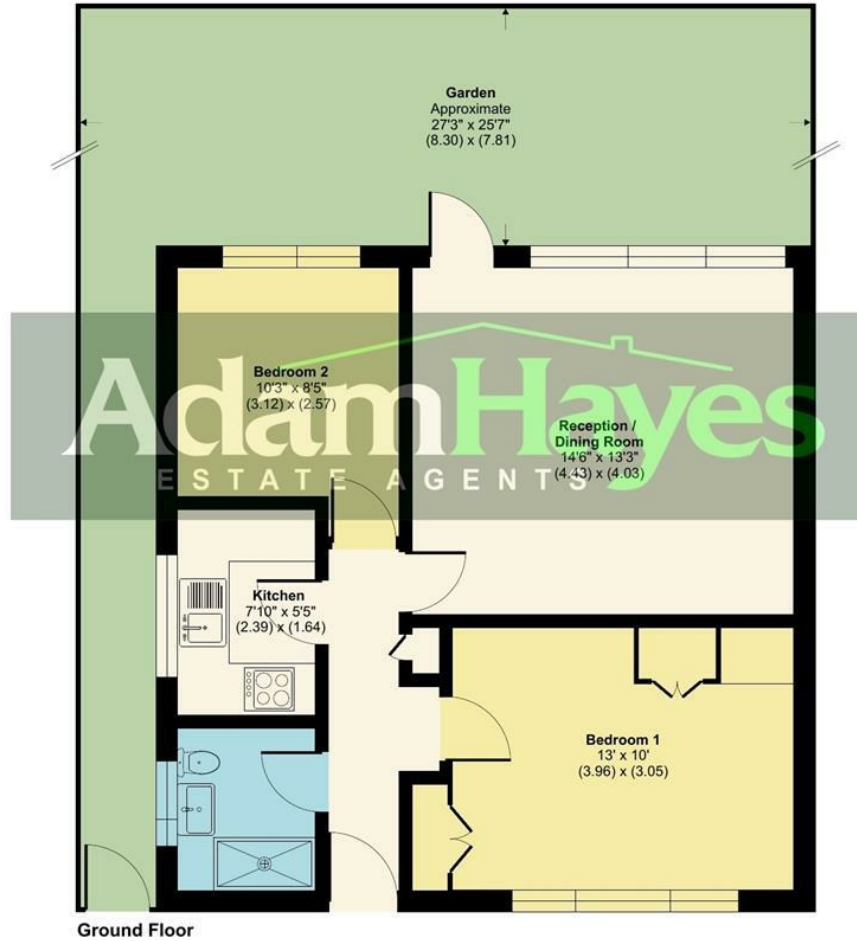


Adam Hayes - East Finchley Office - Sales 158 High Road, East Finchley, London, N2 9AS

Tel: 0208 883 2621 Email: info@adam-hayes.co.uk Web: www.adam-hayes.co.uk

Approximate Area = 556 sq ft / 51.6 sq m

For identification only - Not to scale



Floor plan produced in accordance with RICS Property Measurement 2nd Edition, Incorporating International Property Measurement Standards (IPMS2 Residential). © ritchecom 2025. Produced for Adam Hayes Estate Agents. REF: 1273725

These particulars, whilst believed to be accurate, are set out as a general outline only for guidance and do not constitute any part of an offer or contract. Intending purchasers or prospective tenants should not rely on them as statements or representation of fact, but must satisfy themselves by inspection or otherwise as to their accuracy. We have not carried out a detailed survey, not tested the services, appliances and specific fittings. Room sizes should not be relied upon for carpets and furnishings. The measurements given are approximate. No person in this firm's employment has the authority to make or give any representation or warranty in respect of the property.