





Adam Hayes - East Finchley Office - Lettings 158 High Road, East Finchley, London, N2 9AS

Tel: 0208 883 2621 Email: info@adam-hayes.co.uk Web: www.adam-hayes.co.uk

Risborough Close, London, N10 3PL

£2,000 PCM

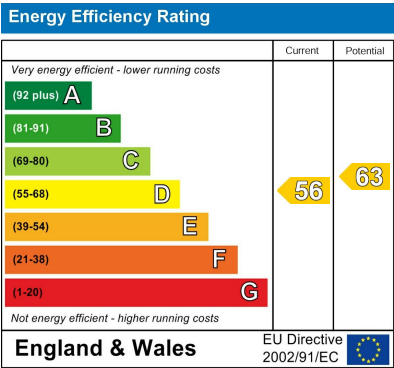
 2 Bedrooms  1 Bathrooms  1 Receptions

Key Features

- Lovely Two Bedroom Flat
- Purpose Built Block
- Close to Muswell Hill Broadway
- Modern Kitchen
- Modern Bathroom
- Double Glazing

Other Information

Council Tax Band: C
Length of Tenancy: Long Let
Deposit: £2,305



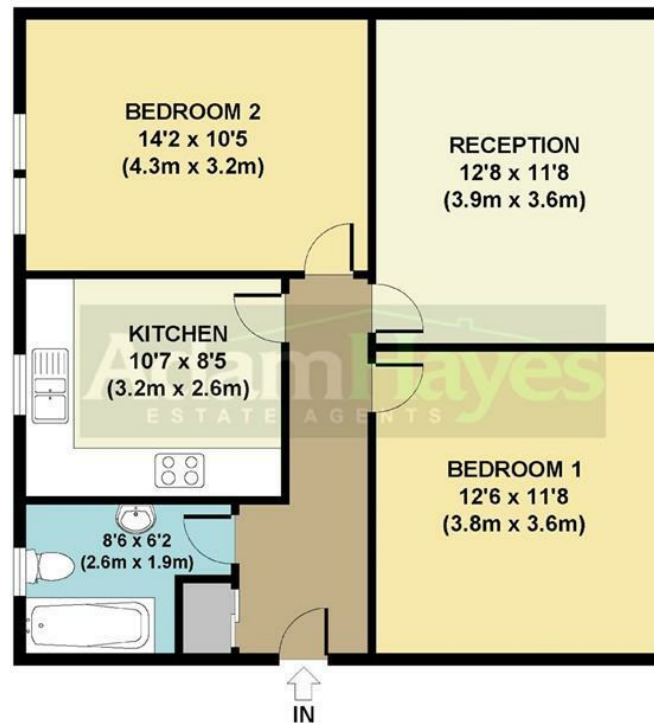
Nearest Stations

- Highgate Station
- Alexandra Palace Station
-

Property Description

Nestled in a sought after purpose-built block just moments from Muswell Hill Broadway, this beautifully presented top floor, two- edroom apartment offers an exceptional blend of style, comfort, and convenience.

The home boasts a sleek high gloss fitted kitchen with integrated appliances, complementing a well appointed modern bathroom. The spacious living areas are enhanced by elegant wooden flooring throughout, creating a warm and inviting atmosphere. With double glazing and gas central heating, you will also enjoy year round comfort. Positioned in a prime location, this property is just a short stroll from an array of boutique shops, cafes, restaurants, parks, and excellent transport links, offering the best of Muswell Hill's vibrant lifestyle. Early viewings are highly recommended.



GROUND FLOOR
GROSS INTERNAL
FLOOR AREA 687 SQ FT

APPROX. GROSS INTERNAL FLOOR AREA 687 SQ FT / 64 SQ M
Floorplans are for identification and guideline purposes only, not to scale.
Compliant with RICS code of measuring practice.
Floorplans supplied by www.draftingfloorplan.com

These particulars, whilst believed to be accurate, are set out as a general outline only for guidance and do not constitute any part of an offer or contract. Intending purchasers or prospective tenants should not rely on them as statements or representation of fact, but must satisfy themselves by inspection or otherwise as to their accuracy. We have not carried out a detailed survey, not tested the services, appliances and specific fittings. Room sizes should not be relied upon for carpets and furnishings. The measurements given are approximate. No person in this firm's employment has the authority to make or give any representation or warranty in respect of the property.