





Adam Hayes - East Finchley Office - Lettings 158 High Road, East Finchley, London, N2 9AS

Tel: 0208 883 2621 Email: info@adam-hayes.co.uk Web: www.adam-hayes.co.uk

Asmunds Hill, London, NW11 6ET

£3,250 PCM

 3 Bedrooms  1 Bathrooms  1 Receptions

Key Features

- Three Bedroom Cottage
- Sought After Location
- Good Size Through lounge
- Modern Kitchen
- Utility Room
- Guest WC
- Mature Garden

Nearest Stations

- Golders Green Station
- Brent Cross Station

Property Description

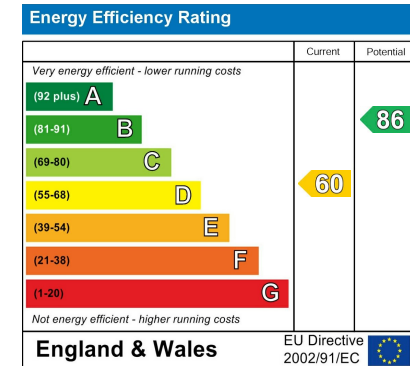
A charming three-bedroom character cottage is exuding timeless elegance. This idyllic abode is conveniently located near Temple Fortune High Road, offering easy access to a wealth of amenities. The property showcases a spacious through lounge, providing the perfect setting for relaxation and entertainment. A modern fitted kitchen, utility room, and guest WC add practicality to the living space. With the comfort of gas central heating and a mature, private rear garden, this cottage harmoniously blends old-world charm with modern conveniences, promising a tranquil and convenient lifestyle for its lucky residents. To really appreciate the location and condition, an internal viewing is highly recommended!

Other Information

Council Tax Band: G

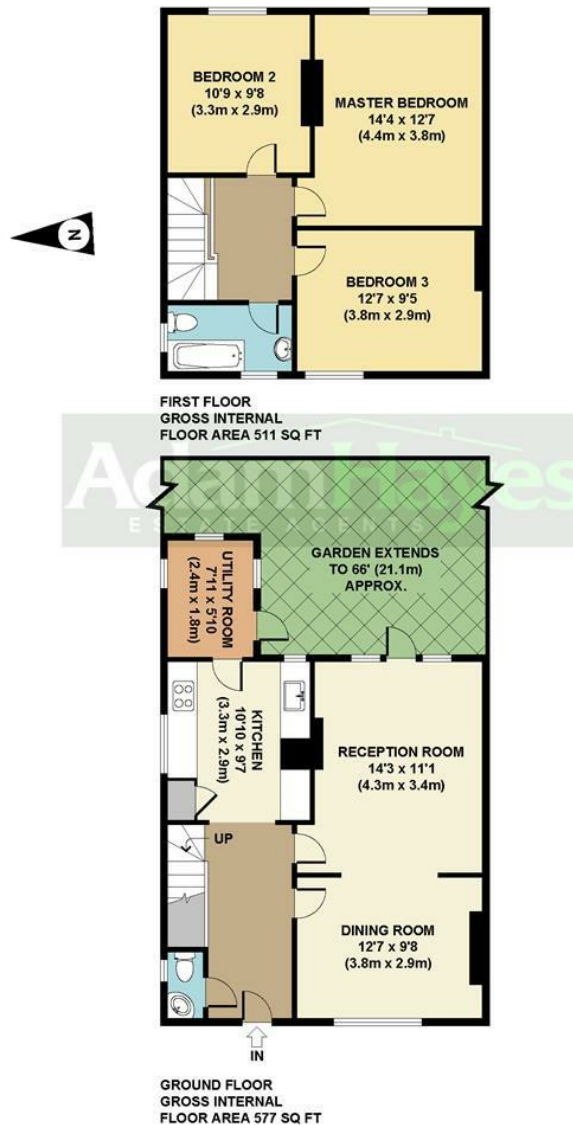
Length of Tenancy: Long Let

Deposit: £3,750



Adam Hayes - East Finchley Office - Lettings 158 High Road, East Finchley, London, N2 9AS

Tel: 0208 883 2621 Email: info@adam-hayes.co.uk Web: www.adam-hayes.co.uk



APPROX. GROSS INTERNAL FLOOR AREA 1088 SQ FT / 101 SQ M
 Floorplans are for identification and guideline purposes only, not to scale.
 Compliant with RICS code of measuring practice.
 Floorplans supplied by www.draftingfloorplan.com

These particulars, whilst believed to be accurate, are set out as a general outline only for guidance and do not constitute any part of an offer or contract. Intending purchasers or prospective tenants should not rely on them as statements or representation of fact, but must satisfy themselves by inspection or otherwise as to their accuracy. We have not carried out a detailed survey, not tested the services, appliances and specific fittings. Room sizes should not be relied upon for carpets and furnishings. The measurements given are approximate. No person in this firm's employment has the authority to make or give any representation or warranty in respect of the property.