



Stokes Court, East Finchley, N2 8NX

 1  1  1

Adam
ESTATE AG



£1,300 PCM





Adam Hayes - East Finchley Office - Lettings 158 High Road, East Finchley, London, N2 9AS

Tel: 0208 883 2621 Email: info@adam-hayes.co.uk Web: www.adam-hayes.co.uk

Stokes Court, East Finchley, N2 8NX

£1,300 PCM

 1 Bedrooms  1 Bathrooms  1 Receptions

Key Features

- Over 60s Retirement Flat
- Recently Refurbished
- Modern Kitchen
- Modern Shower Room
- Warden Assisted
- Close to Transport and Shops

Nearest Stations

- East Finchley Tube

Property Description

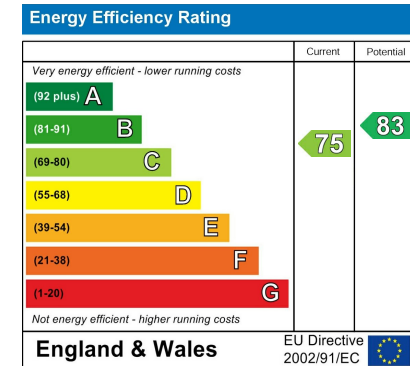
Over 60s Retirement Flat A recently refurbished one bedroom apartment situated in this popular warden-assisted retirement block close to East Finchley Tube Station and local shops and amenities. The property benefits from an approx. 18ft reception leading onto a modern fitted kitchen, a modern shower room, fitted wardrobes, double glazing, lift access, use of communal gardens and communal parking. To really appreciate the condition and facilities, an internal viewing is highly recommended!

Other Information

Council Tax Band: C

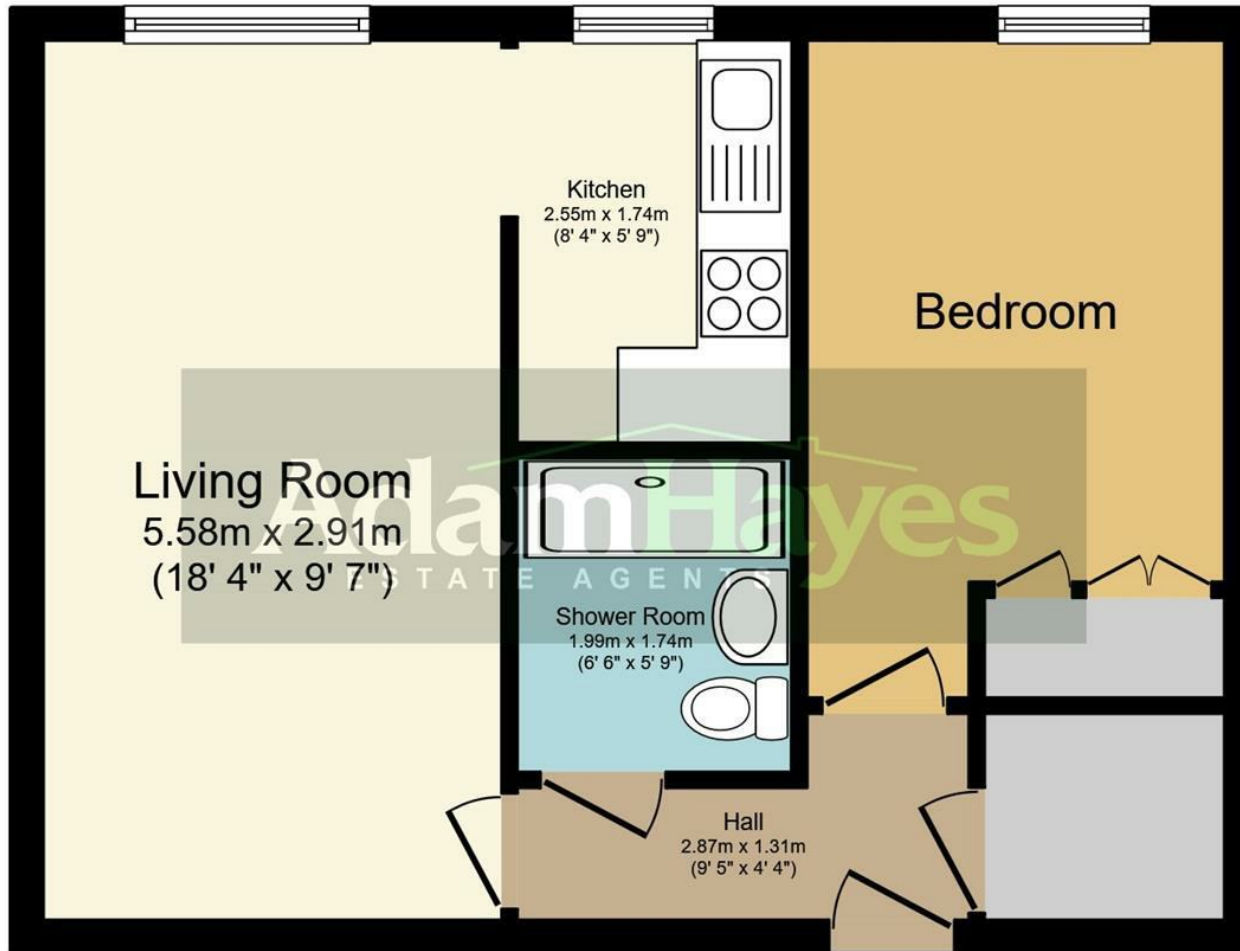
Length of Tenancy: Long Let

Deposit: £1,500



Adam Hayes - East Finchley Office - Lettings 158 High Road, East Finchley, London, N2 9AS

Tel: 0208 883 2621 Email: info@adam-hayes.co.uk Web: www.adam-hayes.co.uk



Floor Plan

Total floor area 41.8 sq.m. (450 sq.ft.) approx

This plan is for illustration purposes only and may not be representative of the property. Plan not to scale.

These particulars, whilst believed to be accurate, are set out as a general outline only for guidance and do not constitute any part of an offer or contract. Intending purchasers or prospective tenants should not rely on them as statements or representation of fact, but must satisfy themselves by inspection or otherwise as to their accuracy. We have not carried out a detailed survey, not tested the services, appliances and specific fittings. Room sizes should not be relied upon for carpets and furnishings. The measurements given are approximate. No person in this firm's employment has the authority to make or give any representation or warranty in respect of the property.