



Manor Park Road, East Finchley, N2

£800,000


 3 Bedrooms  2 Bathrooms  1 Reception



Adam Hayes - East Finchley Office - Sales 158 High Road, East Finchley, London, N2 9AS
Tel: 0208 883 2621 Email: info@adam-hayes.co.uk Web: www.adam-hayes.co.uk

Manor Park Road, East Finchley, N2

£800,000

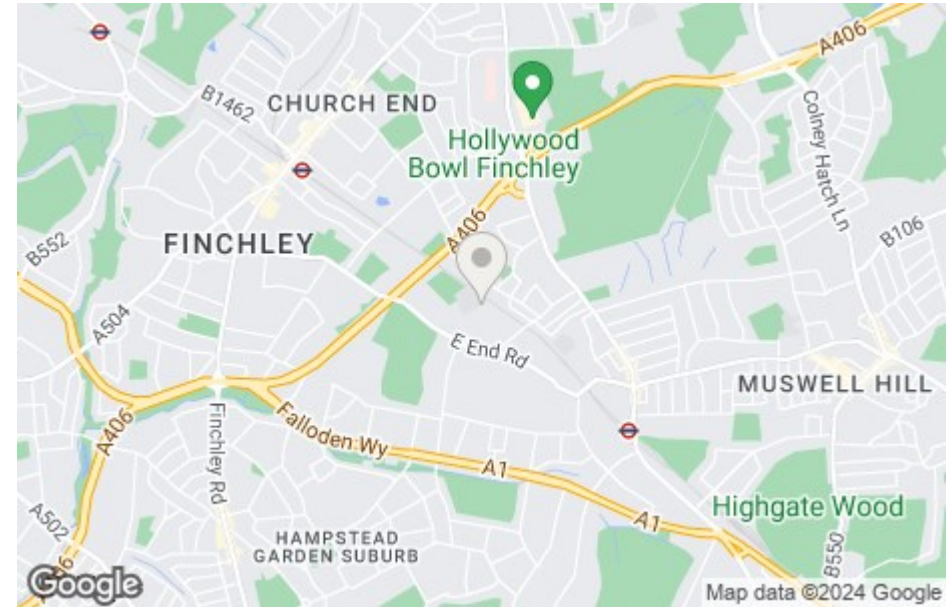
 3 Bedrooms  2 Bathrooms  1 Receptions

Key Features

- Three Bedrooms
- Two Bathrooms
- Modern Eat In Kitchen
- Double Glazing
- Off Street Parking
- Low Maintenance Rear Garden

Other Information

Tenure: Freehold
Council Tax Band: E



Nearest Stations

East Finchley Station	0.6 miles
Finchley Central Station	0.9 miles
West Finchley Station	1.2 miles

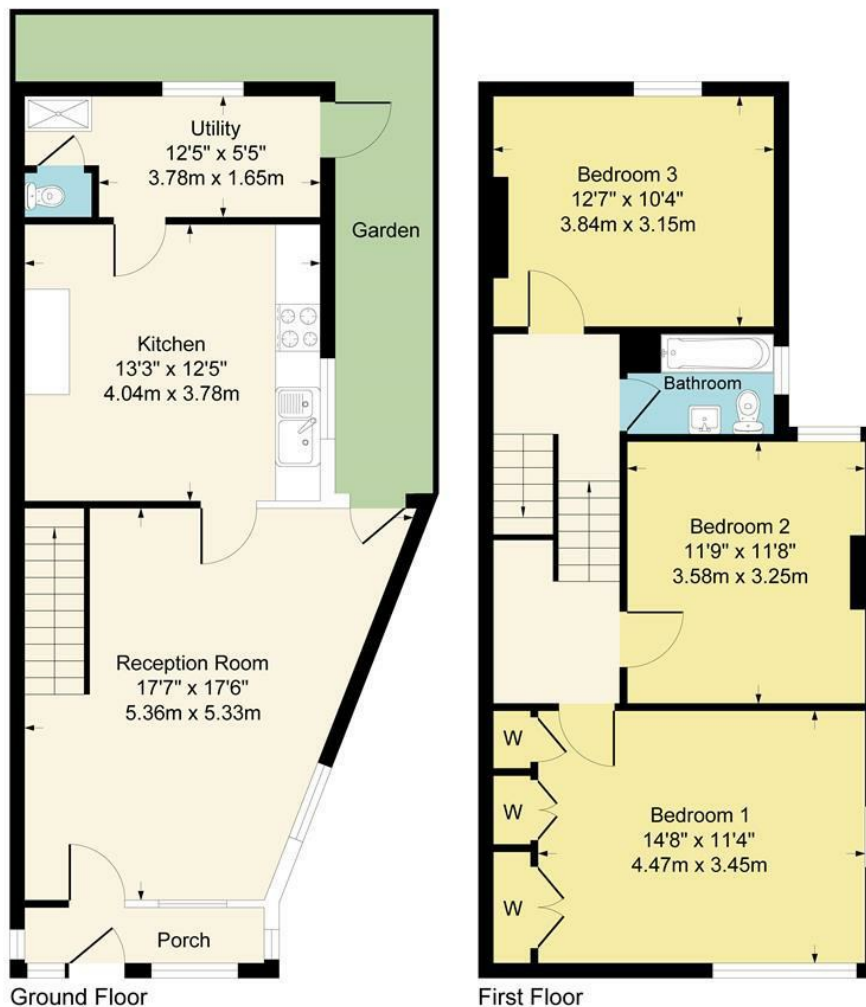
Property Description

Situated in this popular tree lined road turning off Church Lane and within a short walk to East Finchley's High Road is this three double bedroom, two bathroom end of terraced family house. The property benefits from an approximate 13ft modern eat in kitchen, double glazing windows, a low maintenance rear garden and off street parking for up to three cars. To really appreciate the potential, size, and location an internal viewing is highly recommended via vendors sole agents Adam Hayes Estate Agents.

Adam Hayes - East Finchley Office - Sales 158 High Road, East Finchley, London, N2 9AS

Tel: 0208 883 2621 Email: info@adam-hayes.co.uk Web: www.adam-hayes.co.uk

**Approximate Gross Internal Area
1110 sq ft - 103 sq m**



Although every attempt has been made to ensure accuracy, all measurements are approximate.
This floorplan is for illustrative purposes only and not to scale.
Measured in accordance with RICS Standards.

These particulars, whilst believed to be accurate, are set out as a general outline only for guidance and do not constitute any part of an offer or contract. Intending purchasers or prospective tenants should not rely on them as statements or representation of fact, but must satisfy themselves by inspection or otherwise as to their accuracy. We have not carried out a detailed survey, not tested the services, appliances and specific fittings. Room sizes should not be relied upon for carpets and furnishings. The measurements given are approximate. No person in this firm's employment has the authority to make or give any representation or warranty in respect of the property.