



Brownsell Road, East Finchley, N2

£600,000



 3 Bedrooms  2 Bathrooms  1 Reception



Adam Hayes - East Finchley Office - Sales 158 High Road, East Finchley, London, N2 9AS
Tel: 0208 883 2621 Email: info@adam-hayes.co.uk Web: www.adam-hayes.co.uk

Brownswell Road, East Finchley, N2

£600,000

 3 Bedrooms  2 Bathrooms  1 Receptions

Key Features

- Three Bedrooms
- Two Bathrooms
- Catchment for Popular Schools
- Modern Kitchen
- Double Glazing
- Garden

Other Information

Tenure: Freehold
Council Tax Band: D



Nearest Stations

East Finchley Station	0.8 miles
Finchley Central Station	0.8 miles
West Finchley Station	1.1 miles

Property Description

Situated in this sought-after location off Oak Lane and conveniently located in the catchment area for a number of popular schools is this charming three bedroom, two bathroom terraced home. The property is an ideal first time home and has been thoughtfully designed for modern living. With its contemporary features, versatile layout, and easy-to-maintain garden, this property is a dream home for those embarking on their homeownership journey.

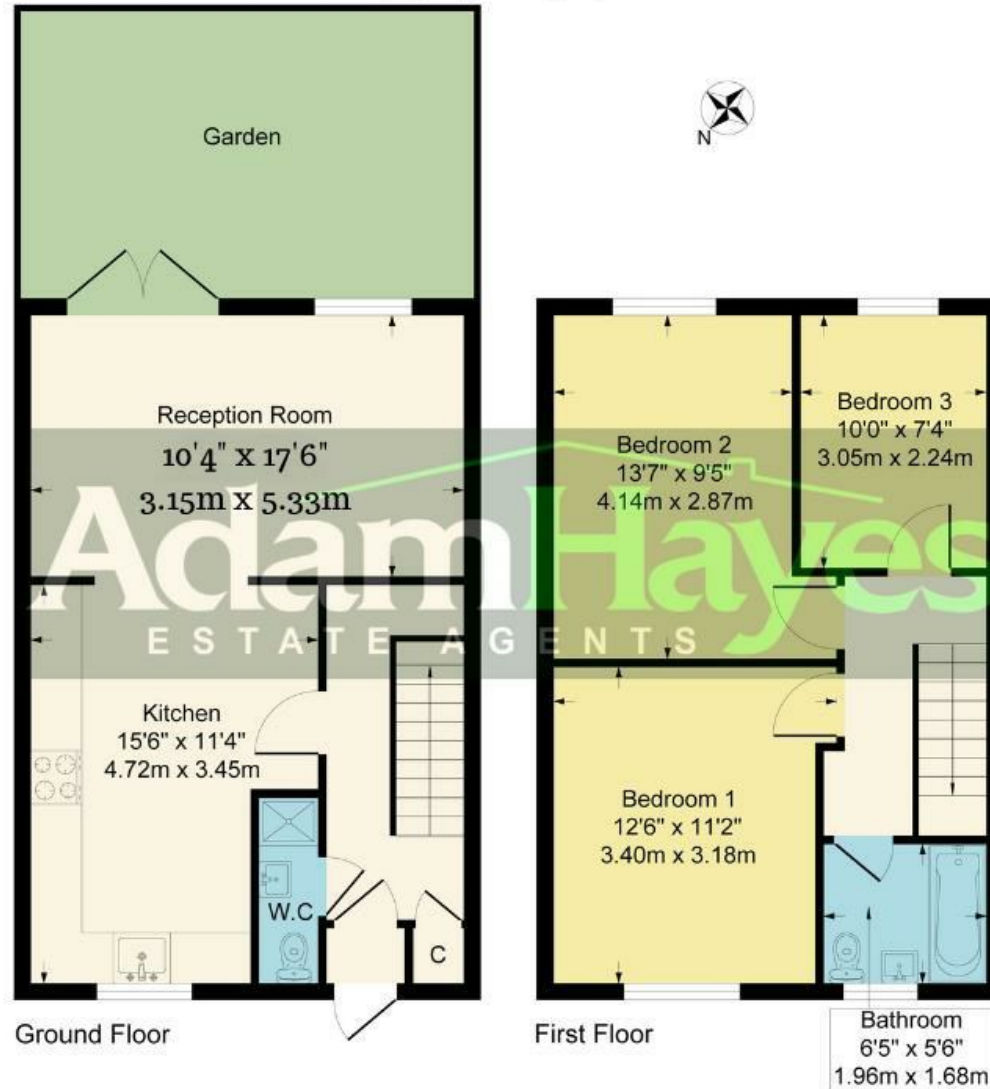
Benefitting from a modern eat-in kitchen boasting sleek finishes, ample storage, and top-of-the-line appliances, creating the perfect space for entertaining or enjoying family meals. The three well-appointed bedrooms provide comfort and versatility, accommodating various lifestyle needs. The two bathrooms on each floor are elegantly designed and ensure convenience with a touch of luxury. Escape to the low-maintenance rear garden, a private oasis for outdoor gatherings or tranquil moments. To really appreciate the size, location and condition an internal viewing is highly recommended via vendors sole agents Adam Hayes Estate Agents.

Adam Hayes - East Finchley Office - Sales 158 High Road, East Finchley, London, N2 9AS

Tel: 0208 883 2621 Email: info@adam-hayes.co.uk Web: www.adam-hayes.co.uk

Approximate Gross Internal Area

915 sq ft - 85 sq m



Although every attempt has been made to ensure accuracy, all measurements are approximate.
This floorplan is for illustrative purposes only and not to scale.
Measured in accordance with RICS Standards.

These particulars, whilst believed to be accurate, are set out as a general outline only for guidance and do not constitute any part of an offer or contract. Intending purchasers or prospective tenants should not rely on them as statements or representation of fact, but must satisfy themselves by inspection or otherwise as to their accuracy. We have not carried out a detailed survey, not tested the services, appliances and specific fittings. Room sizes should not be relied upon for carpets and furnishings. The measurements given are approximate. No person in this firm's employment has the authority to make or give any representation or warranty in respect of the property.