



Hobson Avenue

+44 (0) 1223 508050

lettings@cookecurtis.co.uk

www.cookecurtis.co.uk

A luxury, two-bedroom apartment located within walking distance of Addenbrookes and the new Biomedical Campus, with uninterrupted views across the new 120-acre country park of wetland and woodland.

£1,700 pcm

Hobson Avenue,
Trumpington, CB2 9EG



This two-bedroom apartment has been thoughtfully designed with luxury living in mind, neutral decoration, wood framed double glazed windows, high quality oak flooring throughout and satin stainless steel finishing touches.

The kitchen has contemporary gloss doors and fully integrated washer/dryer, dishwasher, fridge / freezer, hob, double oven and microwave. The opened planned living space has triple aspects and access onto the balcony, which has beautiful uninterrupted views across the 120-acre country park, featuring wetland and woodland.

There are two good sized bedrooms, one of which has an en-suite shower room and a large built in wardrobe. Opposite the bedrooms is a family bathroom comprising a bath with shower over, WC and hand basin.

There is allocated parking located at ground floor level in a private secure gated car park for the building.

Available immediately to a professional couple or single occupant.

Video tour available.







80 sqm / 990 sqft

Available immediately

Second floor apartment

2 bed, 2 bath, 1 recep

Allocated parking

Unfurnished

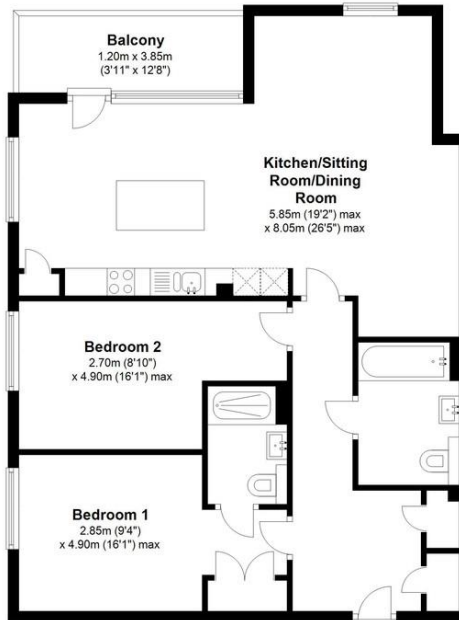
EPC - B / 87

Council tax - C

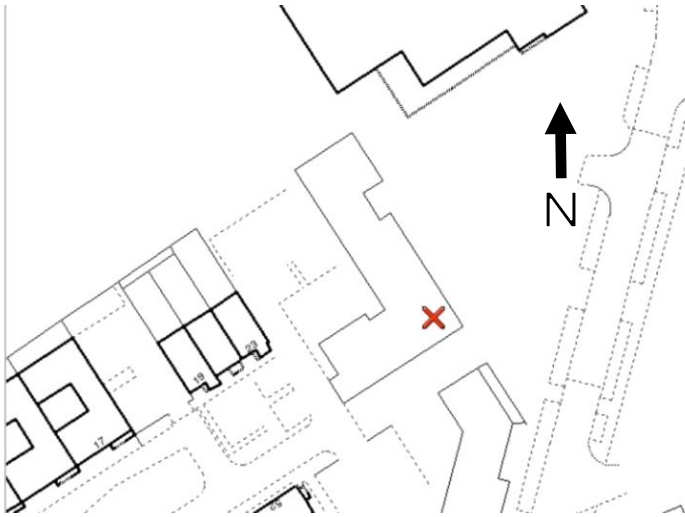


Second Floor

Approx. 79.2 sq. metres (852.9 sq. feet)



Total area: approx. 79.2 sq. metres (852.9 sq. feet)



Trumpington is a thriving, fast growing part of the city that still manages to retain its village identity and sense of community. It is exceptionally well located for access into the Addenbrooke's campus, out to the M11 and into the city by car, bus, guided bus, by bicycle on one of several purpose-built cycle routes, or even an enthusiastic walk. The city's mainline station can be easily reached along the guided busway cycleway without having to mix with car traffic at all.

The area has three primary schools and a brand new state-of-the-art secondary school that opened in 2016 bringing with it excellent sporting facilities including a private members' gym.

A number of Private Schools are within cycling distance. There are also various restaurants, pubs, shops, a post office, hairdresser, surgery, chemist, Waitrose supermarket and two new country parks.

COOKE
CURTIS
& CO