



Sherwood Newlands Drive
Wantage, Oxfordshire, OX12 0FW

Sherwood Newlands Drive, Wantage, Oxfordshire, OX12 0FW

Family life and practical living come hand in hand in the Sherwood. For busy families, it's great to have a separate living room. For the work that goes on behind the scenes, the utility room does a great job. Last but not least, upstairs, three bedrooms and two bathrooms give everyone a bit more privacy. This is a house that really works well.

Additional Information

Tenure: Freehold

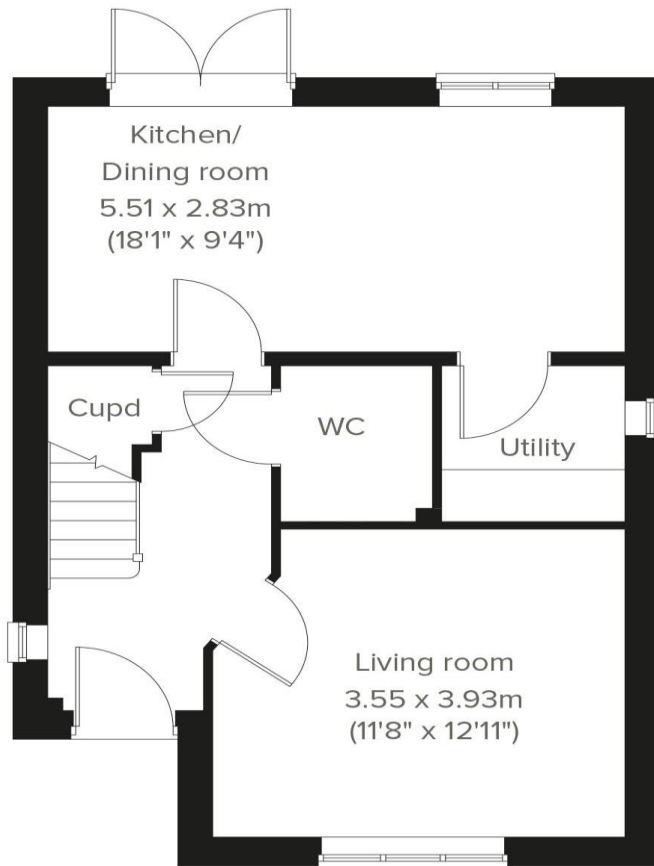
Council tax band: Not made available by local authority until post-occupation

Parking - Single Garage

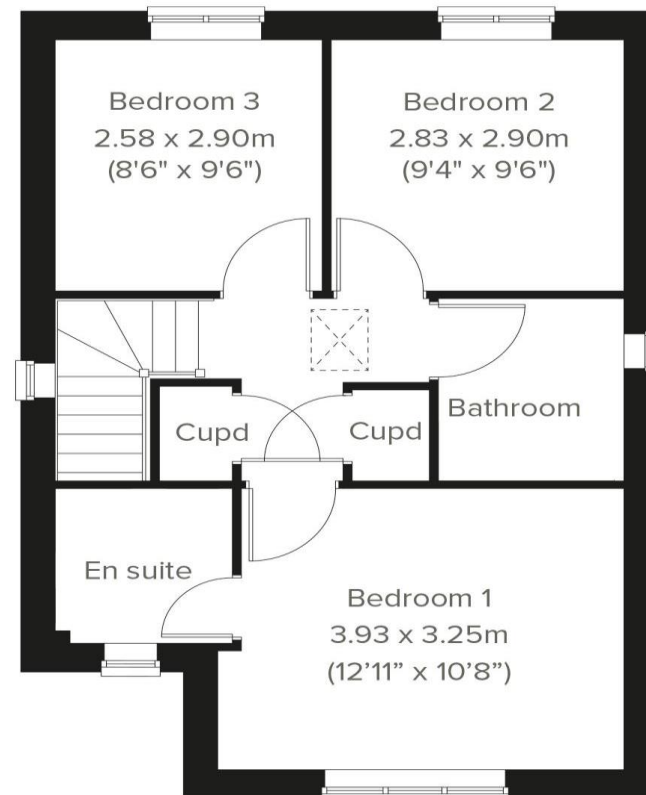




- Detached family home
- Modern open plan kitchen dining room with French doors leading to the garden
- Spacious front-aspect living room
- Garage and off street parking
- Utility room
- Bedroom 1 with en suite
- Downstairs WC
- Photos are for illustration purposes
- Approx 968 sq ft
- Tenure: Freehold



GROUND FLOOR



1ST FLOOR

Important Notice

Thomas Merrifield and their clients give notice that:

1. They are not authorised to make or give any representations or warranties in relation to the property either here or elsewhere, either on their own behalf or on behalf of their client or otherwise. They assume no responsibility for any statement that may be made in these particulars. These particulars do not form any part of any offer or contract and must not be relied upon as statements or representations of fact.

2. Any areas, measurements or distances are approximate. The text, photographs and plans are for guidance only and are not necessarily comprehensive. It should not be assumed that the property has all necessary planning, building regulation or other consents and Thomas Merrifield have not tested any services, equipment or facilities. Purchasers must satisfy themselves by inspection or otherwise.