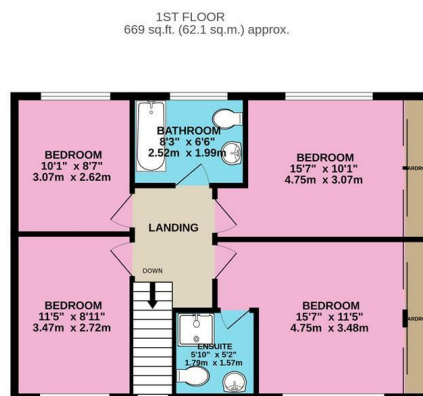
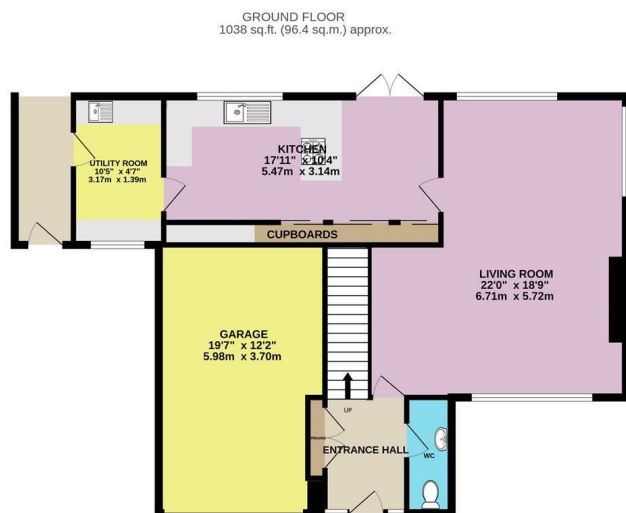




## 420 Redmires Road, Lodge Moor, Sheffield, S10 4LG

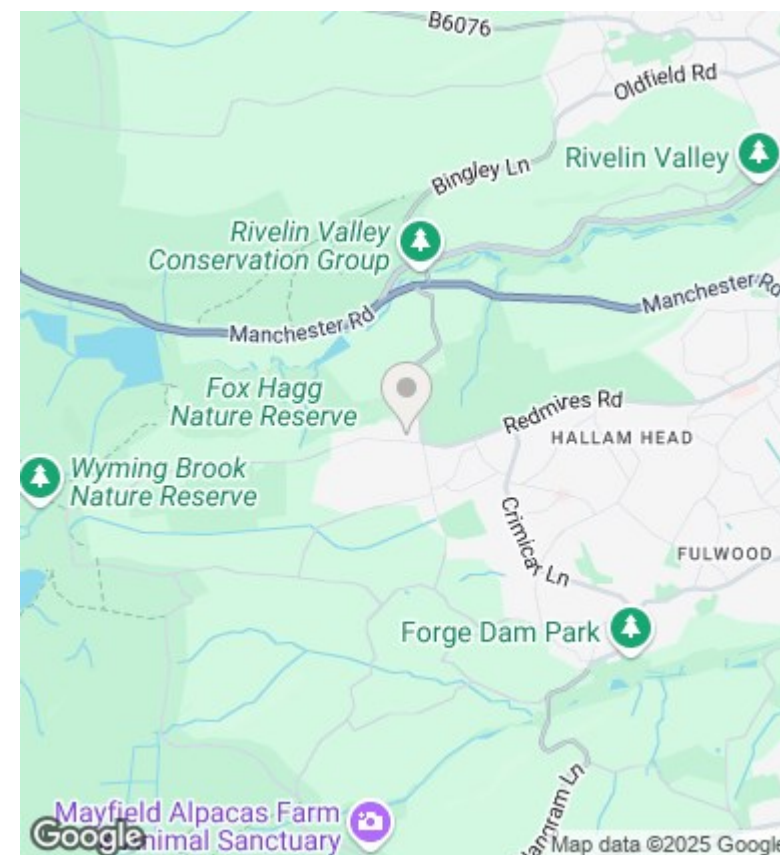
Offers Over £700,000

- Detached family home
- Stunning contemporary kitchen
- Beautiful family bathroom
- Freehold
- Garage and off street parking for multiple cars
- Four double bedrooms
- Spacious rear garden
- Spacious living/dining room
- Principal bedroom with en suite
- Close to nearby countryside



TOTAL FLOOR AREA : 1707 sq.ft. (158.5 sq.m.) approx.

Whilst every attempt has been made to ensure the accuracy of the floorplan contained here, measurements of doors, windows, rooms and any other items are approximate and no responsibility is taken for any error, omission or mis-statement. This plan is for illustrative purposes only and should be used as such by any prospective purchaser. The services, systems and appliances shown have not been tested and no guarantee as to their operability or efficiency can be given.  
Made with Metropix ©2025.



## Directions

## Viewings

Viewings by arrangement only. Call 01142 687777 to make an appointment.

## Council Tax Band

C

## EPC Rating:

D

Energy Efficiency Rating		
	Current	Potential
Very energy efficient - lower running costs		
(92 plus) <b>A</b>		
(81-91) <b>B</b>		
(69-80) <b>C</b>		
(55-68) <b>D</b>	68	74
(39-54) <b>E</b>		
(21-38) <b>F</b>		
(1-20) <b>G</b>		
Not energy efficient - higher running costs		
<b>England &amp; Wales</b>	EU Directive 2002/91/EC	