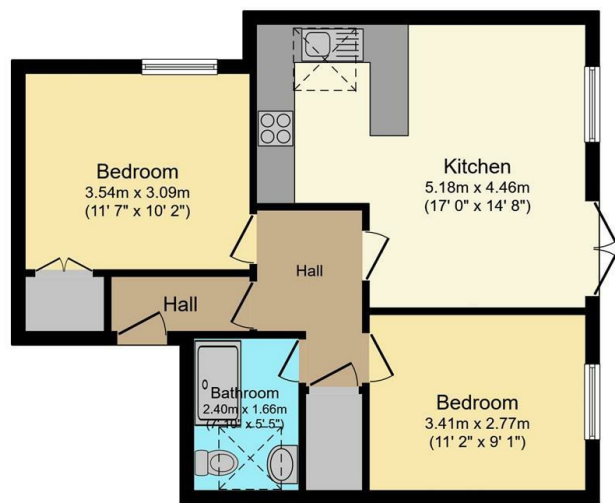




18 Gloucester Crescent, Broomhall, Sheffield, S10 2FZ

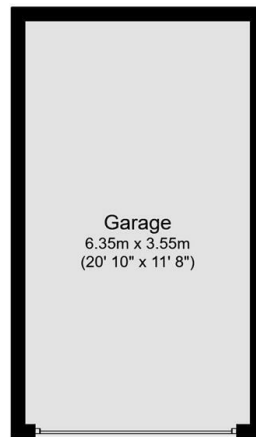
Asking Price £190,000

- Top floor apartment
- Modern shower room
- Garage with EV charging point
- Perfect for a first-time buyer
- Open plan living room/kitchen
- Good storage
- Quiet cul-de-sac
- Two double bedrooms
- Allocated parking
- Short walk to the city centre, both universities and central hospitals



Ground Floor

Floor area 55.2 sq.m. (594 sq.ft.)

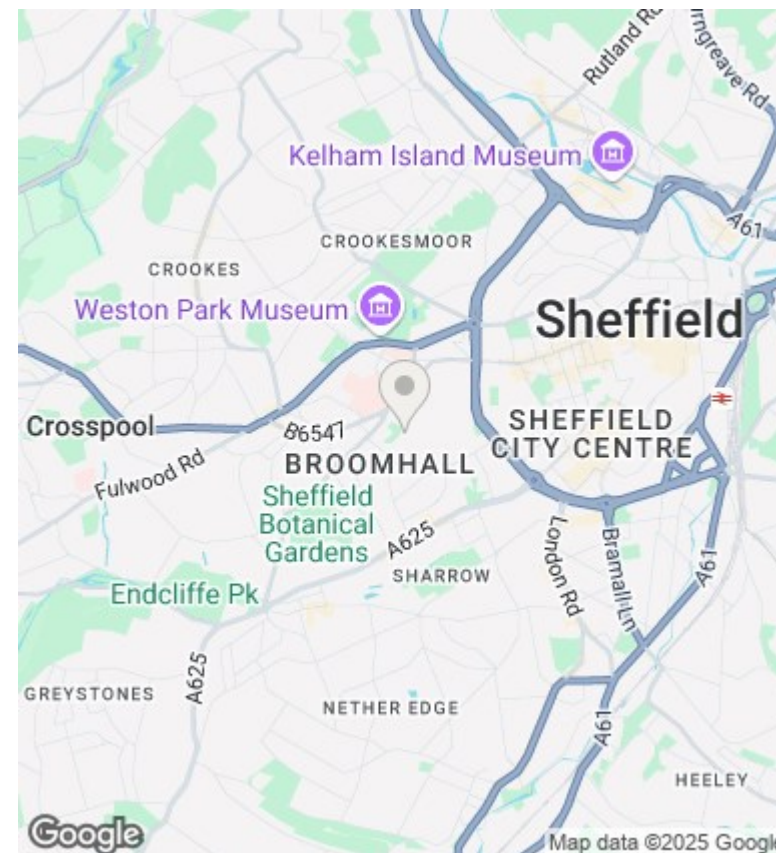


Garage

Floor area 22.5 sq.m. (243 sq.ft.)

TOTAL: 77.8 sq.m. (837 sq.ft.)

This floor plan is for illustrative purposes only. It is not drawn to scale. Any measurements, floor areas (including any total floor area), openings and orientations are approximate. No details are guaranteed, they cannot be relied upon for any purpose and do not form any part of any agreement. No liability is taken for any error, omission or misstatement. A party must rely upon its own inspection(s). Powered by www.Propertybox.io



Directions

Viewings

Viewings by arrangement only. Call 01142 687777 to make an appointment.

Council Tax Band

EPC Rating:

Energy Efficiency Rating		
	Current	Potential
Very energy efficient - lower running costs		
(92 plus) A		
(81-91) B		
(69-80) C		
(55-68) D		
(39-54) E		
(21-38) F		
(1-20) G		
Not energy efficient - higher running costs		
England & Wales	EU Directive 2002/91/EC	